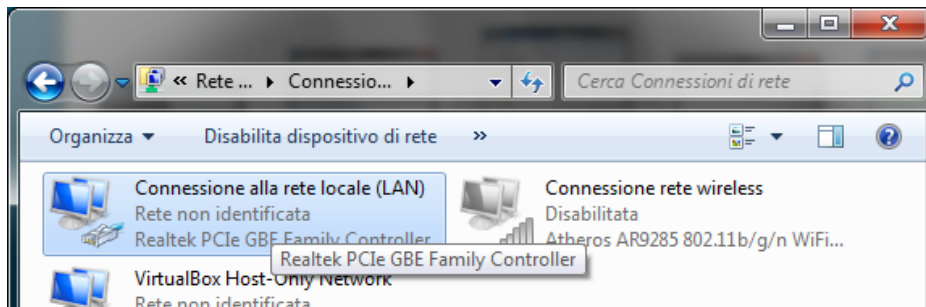


RDNet Ethernet Connection quick start guide

1) Ensure the PC is configured to use static IP LAN address.

To set a static IP address in Windows 7 follow these steps:

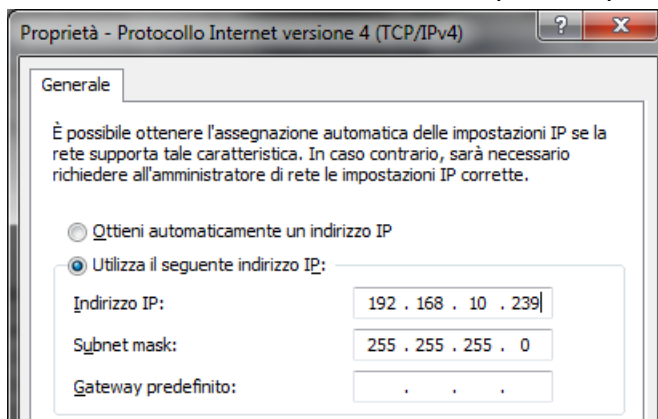
- a. Open “Show network connections” in Control Panel.
- b. Right click on your LAN connection and click “Properties”.



- c. Look for “Internet Protocol version 4” in the scrollbox, select it and click “Properties” button.



- d. Select “Use this IP Address” Option and type an IP address (e.g.: 192.168.10.239). The Subnet Mask will be automatically filled by clicking inside the empty field.

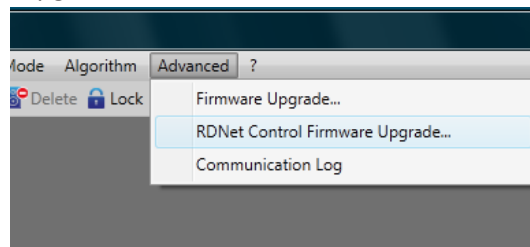


e. Click "OK" and wait until Windows reconfigures the connection

2) Connect the Control8 to the PC using the USB cable and open RDNet software

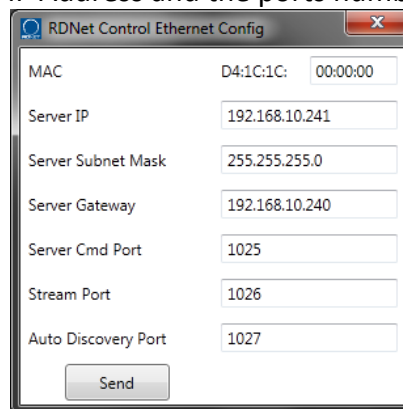
3) RDNet Control8 firmware must be updated to the latest available release.

Be sure your Control8 is up to date to rev 0.12 or greater, otherwise see the instruction manual on how to apply the upgrade.



4) In RDNet software open "Menu->Option->Network Configuration".

A window will appear showing the current Ethernet IP Address and ports number used by the Control 8. Note down the IP Address and the ports number.

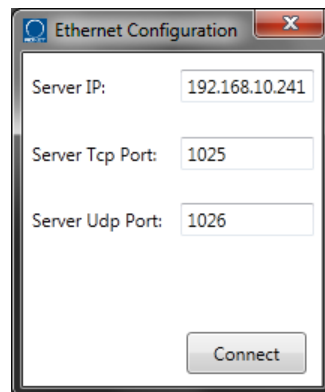


5) Unplug USB and connect Ethernet cable to the Control8 unit.

You can connect Control8 directly to the PC Ethernet port with a LAN crosscable or you can pass through a standard Ethernet HUB. After that you have to power cycle the Control8.

6) In RDNet software click "Network" button on the toolbar.

On the Ethernet dialog, check the Server IP address and ports number to match previously noted ones. If there is a mismatch you can manually edit these parameters.



- 7) Click **“Connect”** Button on the dialog and wait until connection is accomplished.
On the bottom status bar of RDNet you can check for the connection status.