

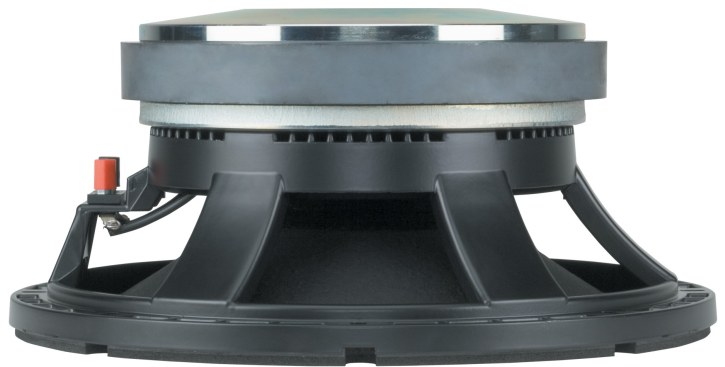
L12L750

MID-BASS

DESCRIPTION

Very high efficiency and extended linearity are special features of this mid-bass transducer.

Very efficient heat dissipation is ensured by a radiator that is part of the basket design. The aluminum voice coil offer a properly aligned Q factor and a very high sensitivity. A specially designed Shallow Triple-roll surround guarantee a very low midrange distortion. Fiberglass former voice coil, polycotton suspensions and treated cone provide the very high power handling.



FEATURES

- 4-inch, fiberglass former, edgewound aluminum voice coil
- 700W continuous program power handling
- 101 dB Sensitivity
- 60 Hz - 2 kHz Frequency range
- Shaped Shallow Triple-roll damped surround
- Inverted dust cap

TECHNICAL SPECIFICATIONS

General specifications

Nominal Diameter:	12 inch / 305 mm
Rated Impedance:	8 ohm
Program Power (watt):	700 W
Power handling capacity:	350 W
Sensitivity:	101.0 dB
Frequency range:	60 - 2000 Hz
Effective piston diameter:	260 mm / 10.24 inch
Max. Excursion Before Damage:	40 mm / 1.57 inch
Minimum Impedance (ohm):	7.2 ohm
Voice Coil Diameter:	4.0 inch / 102 mm
Voice Coil Winding Material:	Aluminium
Voice Coil Length:	12 mm / 0.47 inch
Number of layers:	1
Kind of layers:	outside
Top Plate Thickness:	10 mm / 0.39 inch
Cone Design:	Curved
Surround Material:	Polycotton
Surround Design:	Triple roll
Magnets:	Ceramic
Spider:	Single

Thiele - small parameters

Resonance frequency (Fs):	62 Hz
DC resistance (Re) (ohm):	5.20 ohm
Mechanical factor:	4.10 Qms
Electrical factor:	0.29 Qes
Total factor:	0.27 Qts
Bl factor (Bl) (T x m):	18.80 T x m
Effective moving mass (Mms):	50.0 g
Equivalent Cas air loaded (Vas):	52.0 liters
Effective piston area (Sd):	0.050 m ²
Max. linear excursion (Xmax):	4.0 mm
Voice coil inductance @ 1kHz (Le1k):	1.25 mH
Half-space efficiency (Eff):	4.12%

Mounting informations

Overall diameter:	320 mm / 12.6 inches
Bolt circle diameter:	296-304 mm / 11.65-11.97 inch
Bolt hole diameter:	7 mm / 0.28 inch
Front mount baffle cut-out:	286 mm / 11.26 inch
Rear mount baffle cut-out:	284 mm / 11.18 inch
Volume occupied by the driver:	2.9 liters / 0.11 ft ³

Standard compliance

CE marking:	Yes
-------------	-----

Physical specifications

Color:	Black
--------	-------



Size	Height:	138 mm / 5.43 inches
	Diameter:	320 mm / 12.6 inches
	Weight:	11.4 kg / 25.13 lbs

Shipping informations	Package Height:	210 mm / 8.27 inches
	Package Width:	360 mm / 14.17 inches
	Package Depth:	360 mm / 14.17 inches
	Package Weight:	12.4 kg / 27.34 lbs

PART NUMBER

- **11140037**
L12L750
8ohm

