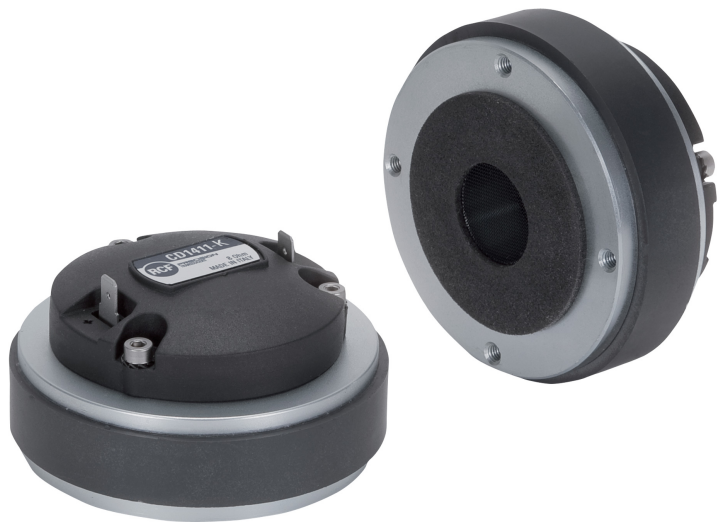


CD1411-K

DRIVER

DESCRIPTION

The CD1411-K is a high performance 1.5-inch diaphragm compression driver with a 1.0 inch exit throat featuring a single piece, low compression, radial phase plug. The diaphragm and suspension are precision formed from Polyimide. The CD1411-K is a very compact size, versatile driver for professional applications.



FEATURES

- 1.5-inch Diaphragm, 1-inch Exit Throat
- 50W continuous program power handling
- Frequency range: 1500Hz - 20kHz
- Optimized geometry radial phase plug
- Very compact size for array applications
- Ceramic magnet assembly
- Polyimide diaphragm assembly

TECHNICAL SPECIFICATIONS

General specifications

Exit Throat Diameter:	1.0 inch / 25 mm
Related Impedance:	8 ohm
Program Power (watt):	50 W
Power handling capacity (watt):	25 W
Sensitivity:	109 dB
Frequency range:	1500 - 20000 Hz
Diaphragm Material:	Polymide
Suspension Material:	Polymide
Suspension Design:	Radial
Minimum Impedance (ohm):	7.00 ohm
Voice Coil Diameter:	1.5 inch / 38 mm
Voice Coil Material:	Edgewound Aluminium
Voice Coil Former Design:	Straight - Kapton
Number of layers:	1
Kind of layers:	outside
Flux Density:	1 T
Phase Plug Design:	10 radial slots
Phase Plug Material:	PP Composite
Magnetics:	Ceramic

Thiele - small parameters

Bl factor (Bl) (T x m):	4.40 T x m
-------------------------	------------

Mounting informations

Overall diameter:	91 mm / 3.58 inches
Overall height:	51 mm / 2.01 inches
Mounting:	4 x 5 mm threaded holes at 90°

Standard compliance

CE marking:	Yes
-------------	-----

Size

Weight:	0.93 kg / 2.05 lbs
---------	--------------------

Shipping informations

Package Height:	85 mm / 3.35 inches
Package Width:	160 mm / 6.3 inches
Package Depth:	160 mm / 6.3 inches
Package Weight:	1.07 kg / 2.36 lbs

PART NUMBER

- **15129048**

CD1411-K