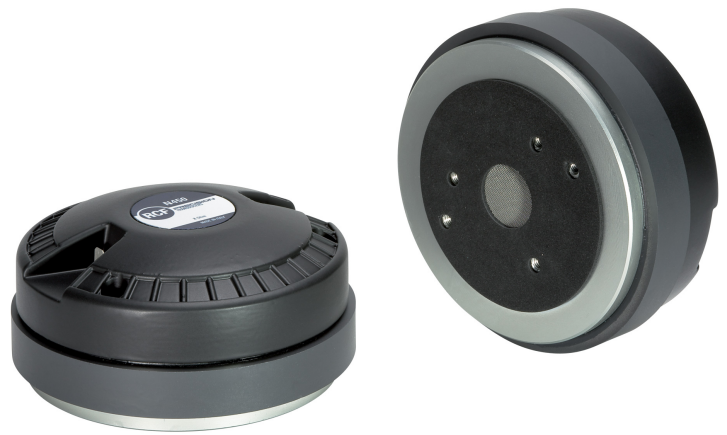


N450

DRIVER

DESCRIPTION

The N450 features 1.75-inch diaphragm with a 1-inch exit throat. The diaphragm is precision formed from 0.025 thick pure titanium. The suspension is based on a vented Mylar design. The N450 is a versatile driver for professional applications.



FEATURES

- 1.75-inch Diaphragm, 1-inch Exit Throat / Pure Titanium Compression Driver
- 100W continuous program power handling
- Frequency range: 1000Hz - 20kHz
- 2-slot optimized geometry phase plug
- Aluminium rear cover
- Copper inductance ring for extended response
- Vented suspension system

TECHNICAL SPECIFICATIONS

General specifications

Exit Throat Diameter:	1.0 inch / 25 mm
Related Impedance:	8 ohm
Program Power (watt):	100 W
Power handling capacity (watt):	50 W
Sensitivity:	107 dB
Frequency range:	1000 - 20000 Hz
Diaphragm Material:	Pure Titanium
Suspension Material:	Mylar
Suspension Design:	Radial
Minimum Impedance (ohm):	8.00 ohm
Voice Coil Diameter:	1.75 inch / 44 mm
Voice Coil Material:	Edgewound Aluminium
Voice Coil Former Design:	Straight - Kapton
Number of layers:	1
Kind of layers:	outside
Flux Density:	1.6 T
Phase Plug Design:	2 slot
Phase Plug Material:	PP Composite
Magnetics:	Ceramic
Voice Coil Demodulation Ring	Copper

Thiele - small parameters

BI factor (BI) (T x m):	6.70 T x m
-------------------------	------------

Mounting informations

Overall diameter:	134 mm / 5.28 inches
Overall height:	70 mm / 2.76 inches
Mounting:	4 x 5 mm threaded holes at 90°

Standard compliance

CE marking:	Yes
-------------	-----

Size

Weight:	2.85 kg / 6.28 lbs
---------	--------------------

Shipping informations

Package Height:	85 mm / 3.35 inches
Package Width:	195 mm / 7.68 inches
Package Depth:	170 mm / 6.69 inches
Package Weight:	3 kg / 6.61 lbs

PART NUMBER

- **15120057**

N450