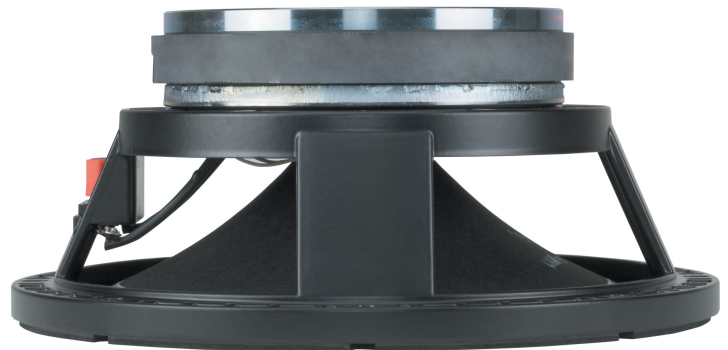


L10-568H

MID-BASS

DESCRIPTION

High efficiency 10" mid-bass.
Very high sensitivity, excellent linearity. A copper ring helps reducing distortion and smoothing the response up to 3 kHz. Voice coil construction, suspensions and cone materials designed to survive at 350 Watt RMS power.



FEATURES

- 2-inch, inside/outside voice coil
- 400W continuous program power handling
- 97.5 dB Sensitivity
- 50 Hz - 3 kHz Frequency range
- M-roll surround and exponential cone geometry
- Copper ring

TECHNICAL SPECIFICATIONS

General specifications

Nominal Diameter:	10 inch / 254 mm
Rated Impedance:	8 ohm
Program Power (watt):	400 W
Power handling capacity (watt):	200 W
Sensitivity:	97.5 dB
Frequency range:	50 - 3000 Hz
Effective piston diameter:	210 mm / 8.27 inch
Max. Excursion Before Damage:	40 mm / 1.57 inch
Minimum Impedance (ohm):	6.6 ohm
Voice Coil Diameter:	2.0 inch / 51 mm
Voice Coil Material:	Copper
Voice Coil Winding Depth:	13 mm / 0.51 inch
Number of layers:	2
Kind of layers:	inside/outside
Top Plate Thickness:	9 mm / 0.35 inch
Cone Design:	Curved
Surround Material:	Polycotton
Surround Design:	M-roll
Magnets:	Ceramic
Spider:	Single

Thiele - small parameters

Resonance frequency (Fs):	70 Hz
DC resistance (Re) (ohm):	5.10 ohm
Mechanical factor:	6.00 Qms
Electrical factor:	0.41 Qes
Total factor:	0.38 Qts
Bl factor (Bl) (T x m):	12.80 T x m
Effective moving mass (Mms):	30.0 g
Equivalent Cas air loaded (Vas):	29.0 liters
Effective piston area (Sd):	0.040 m ²
Max. linear excursion (Xmax):	4.0 mm
Voice coil inductance @ 1kHz (Le1k):	0.14 mH
Half-space efficiency (Eff):	2.37%

Mounting informations

Overall diameter:	260 mm / 10.24 inches
Bolt circle diameter:	242-247 mm / 9.53-9.72 inch
Bolt hole diameter:	7 mm / 0.28 inch
Front mount baffle cut-out:	230 mm / 9.06 inch
Rear mount baffle cut-out:	229 mm / 9.02 inch
Volume occupied by the driver:	1.1 liters / 0.04 ft ³

Standard compliance

CE marking:	Yes
-------------	-----

Physical specifications

Color:	Black
--------	-------



Size	Height:	113 mm / 4.45 inches
	Diameter:	260 mm / 10.24 inches
	Weight:	5 kg / 11.02 lbs

Shipping informations	Package Height:	180 mm / 7.09 inches
	Package Width:	285 mm / 11.22 inches
	Package Depth:	285 mm / 11.22 inches
	Package Weight:	5.5 kg / 12.13 lbs

PART NUMBER

- **11130023**
L10-568H
8ohm

