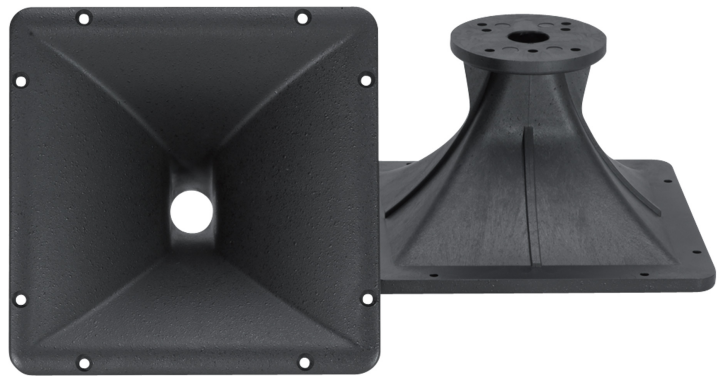


# H100

## PRO HF HORN

### DESCRIPTION

1-inch Throat Adaptor. 90° x 75° Constant Directivity Coverage. Loading down to 800 Hz. State of the art sound quality.



### FEATURES

- 1 inch Throat Adaptor
- 90° x 75° Constant Directivity Coverage
- Loading down to 800 Hz
- State of the art sound quality

**TECHNICAL SPECIFICATIONS****General specifications**

Throat Diameter:	25 mm / 1.0 inch
Horizontal coverage angle:	90°
Vertical coverage angle:	75°
Cut-off Frequency:	800 Hz
Material:	Structural Polyurethane

**Mounting informations**

Overall height:	220 mm / 8.66 inches
Overall width:	220 mm / 8.66 inches
Overall depth:	133 mm / 5.24 inches
Baffle Cut-out height:	182 mm / 7.17 inches
Baffle Cut-out width:	182 mm / 7.17 inches
Mounting:	4 x 7 mm holes, interaxes 76 mm

**Standard compliance**

CE marking:	Yes
-------------	-----

**Size**

Height:	144 mm / 5.67 inches
Diameter:	220 mm / 8.66 inches
Weight:	0.06 kg / 0.13 lbs

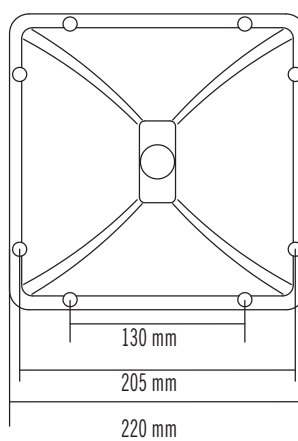
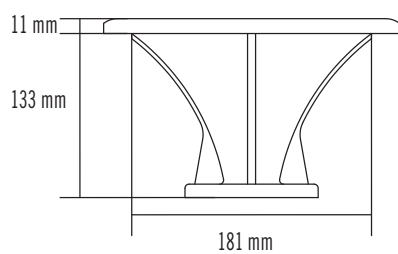
**Shipping informations**

Package Height:	150 mm / 5.91 inches
Package Width:	230 mm / 9.06 inches
Package Depth:	235 mm / 9.25 inches
Package Weight:	0.73 kg / 1.61 lbs

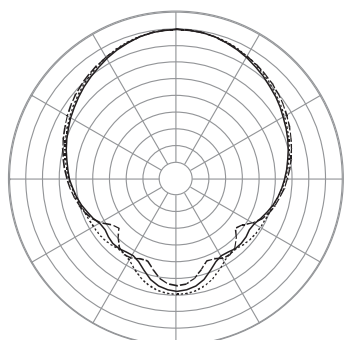
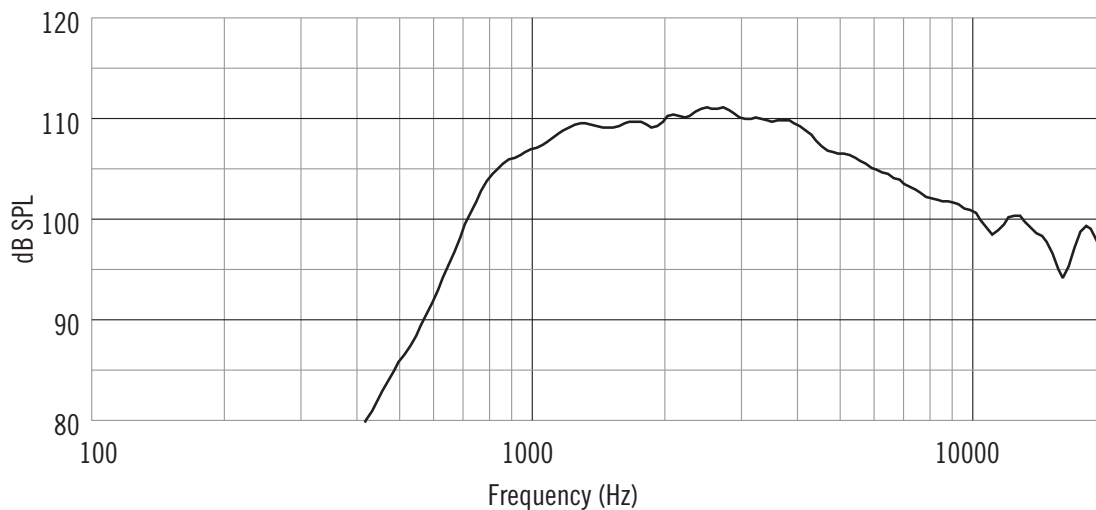
**PART NUMBER**

- **13125015**

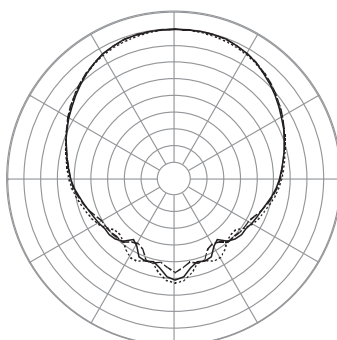
H100



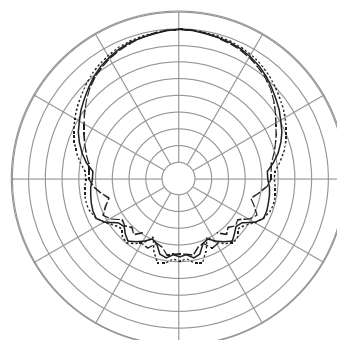
Response 1W/1m



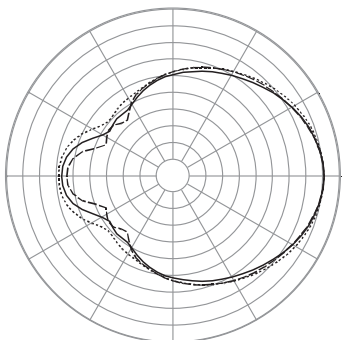
Horizontal 2000 Hz  
1/3 Octave Polars



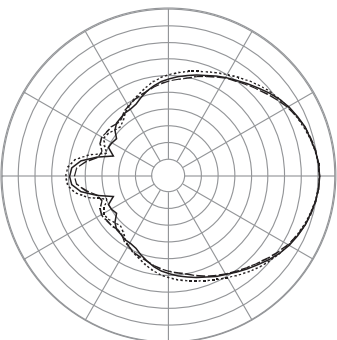
Horizontal 4000 Hz  
1/3 Octave Polars



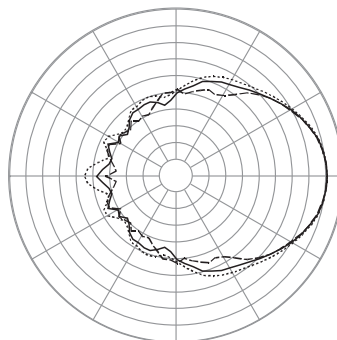
Horizontal 8000 Hz  
1/3 Octave Polars



Vertical 2000 Hz  
1/3 Octave Polars



Vertical 4000 Hz  
1/3 Octave Polars



Vertical 8000 Hz  
1/3 Octave Polars