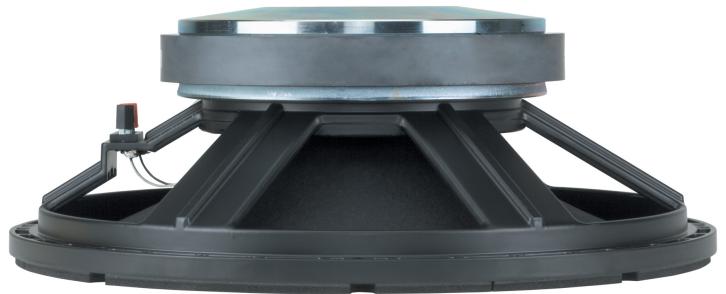


# L15-554K

MID-BASS

## DESCRIPTION

Very high efficiency and good linearity are distinctive features of this mid-bass woofer. Kapton form voice coil, polycotton suspensions and treated cone guarantee the very high power handling of this transducer.



## FEATURES

- 4-inch, fiberglass inside/outside copper voice coil
- 1200W continuous program power handling
- 99 dB Sensitivity
- 40 Hz - 2 kHz Frequency range
- M-roll damped surround
- Exponential damped cone
- Copper ring

## TECHNICAL SPECIFICATIONS

### General specifications

Nominal Diameter:	15 inch / 381 mm
Rated Impedance:	8 ohm
Program Power (watt):	1200 W
Power handling capacity:	600 W
Sensitivity:	99 dB
Frequency range:	40 - 2000 Hz
Effective piston diameter:	325 mm / 12.8 inch
Max. Excursion Before Damage:	44 mm / 1.73 inch
Minimum Impedance (ohm):	7 ohm
Voice Coil Diameter:	4.0 inch / 102 mm
Voice Coil Winding Material:	Copper
Voice Coil Length:	16 mm / 0.63 inch
Number of layers:	2
Kind of layers:	inside/outside
Top Plate Thickness:	9 mm / 0.35 inch
Cone Design:	Curved
Surround Material:	Polycotton
Surround Design:	M-roll
Magnets:	Ceramic
Spider:	Single

### Thiele - small parameters

Resonance frequency (Fs):	35 Hz
DC resistance (Re) (ohm):	6.60 ohm
Mechanical factor:	8.60 Qms
Electrical factor:	0.25 Qes
Total factor:	0.24 Qts
Bl factor (Bl) (T x m):	23.00 T x m
Effective moving mass (Mms):	91 gr
Equivalent Cas air loaded (Vas):	227 liters
Effettive piston area (Sd):	0.08 m2
Max. linear excursion (Xmax):	6 mm
Voice coil inductance @ 1kHz (Le1k):	1.00 mH
Half-space efficiency (Eff):	3.75%

### Mounting informations

Overall diameter:	387 mm / 15.24 inches
Bolt circle diameter:	371 mm / 14.61 inch
Bolt hole diameter:	7 mm / 0.28 inch
Front mount baffle cut-out:	358 mm / 14.09 inch
Rear mount baffle cut-out:	362 mm / 14.25 inch
Volume occupied by the driver:	3.8 liters / 0.15 ft3

### Standard compliance

CE marking:	Yes
-------------	-----



<b>Size</b>	Height:	133 mm / 5.24 inches
	Diameter:	387 mm / 15.24 inches
	Weight:	11 kg / 24.25 lbs

---

<b>Shipping informations</b>	Package Height:	205 mm / 8.07 inches
	Package Width:	435 mm / 17.13 inches
	Package Depth:	435 mm / 17.13 inches
	Package Weight:	12.5 kg / 27.56 lbs

## **PART NUMBER**

- **11160011**

L15-554K

8ohm

