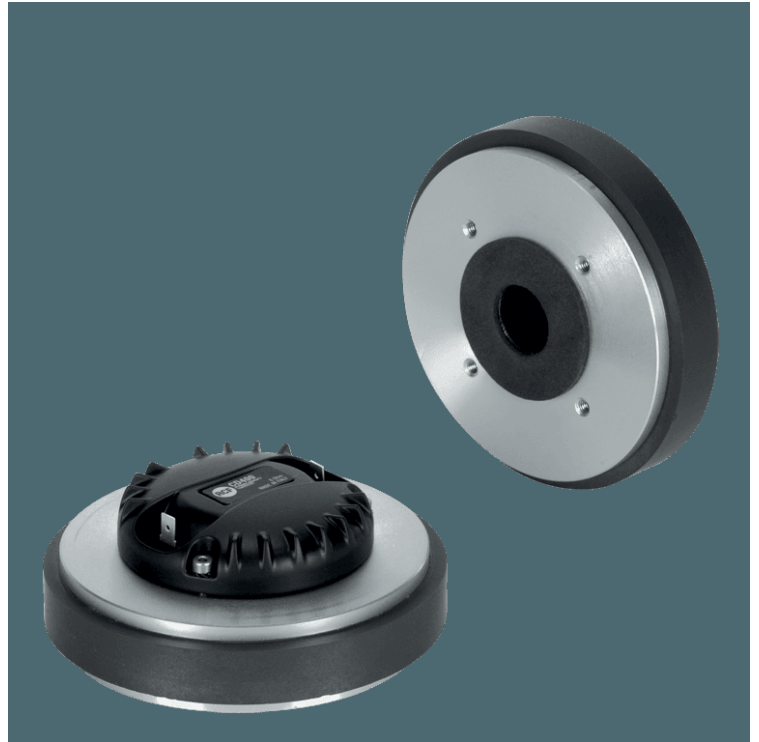


CD400

DRIVER

DESCRIPTION

The CD400 is a high performance 1.75-inch diaphragm ceramic compression driver with a 1.0 inch exit throat. The diaphragm is precision formed from polyester. The voice coil assembly is designed using high temperature Kapton former, rectangular profile copper clad aluminum wire and assembled using advanced, specially formulated adhesives.



FEATURES

- 1.75-inch Diaphragm, 1.0-inch Exit Throat / Polyester Compression Driver
- 100W continuous program power handling
- Frequency range: 1200Hz - 20kHz
- 2-slot optimized geometry phase plug
- Polyester diaphragm
- Vented suspension system
- Ceramic magnet assembly

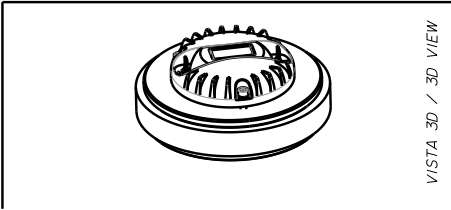
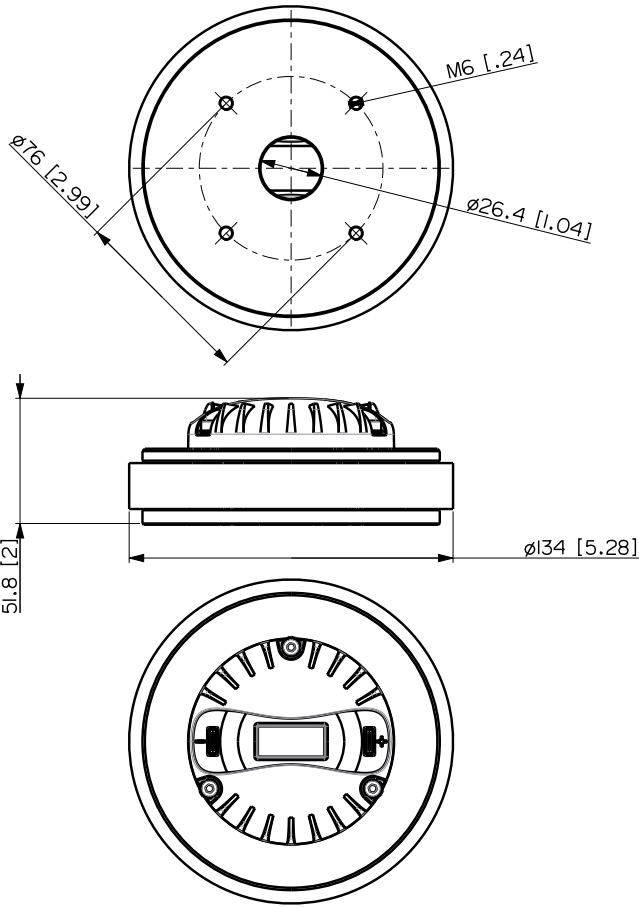
TECHNICAL SPECIFICATIONS

General specifications	Exit Throat Diameter:	1.0 inch / 25 mm
	Related Impedance:	8 ohm
	Program Power (watt):	100 W
	Power handling capacity (watt):	50 W
	Sensitivity:	109 dB
	Frequency range:	1200 - 20000 Hz
	Suspension Design:	Flat
	Minimum Impedance (ohm):	6.50 ohm
	Voice Coil Diameter:	1.75 inch / 44 mm
	Voice Coil Former Design:	Straight - Kapton
	Number of layers:	1
	Kind of layers:	outside
	Flux Density:	1.8 T
	Phase Plug Design:	2 slot
<hr/>		
Thiele - small parameters	Bl factor (Bl) (T x m):	7.50 T x m
<hr/>		
Mounting information	Overall diameter:	134 mm / 5.28 inches
	Overall height:	52 mm / 2.05 inches
	Mounting:	4 x 6 mm threaded holes at 90°
<hr/>		
Standard compliance	Safety agency:	CE compliant
<hr/>		
Size	Weight:	2.46 kg / 5.42 lbs
<hr/>		
Shipping information	Package Height:	68 mm / 2.68 inches
	Package Width:	153 mm / 6.02 inches
	Package Depth:	155 mm / 6.10 inches
	Package Weight:	2.63 kg / 5.8 lbs

PART NUMBER**• 15129047**

CD400

8ohm



VISTA 3D / 3D VIEW

	C.DRIVER CD400 08 OHM	REV. A
--	-----------------------	-----------

