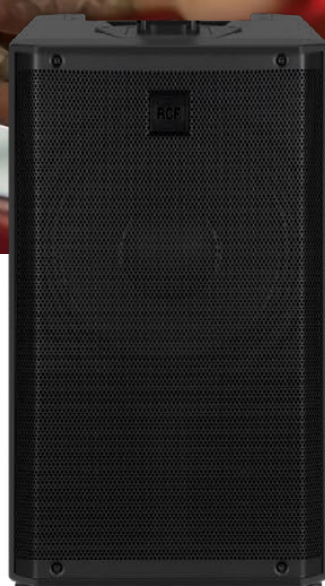


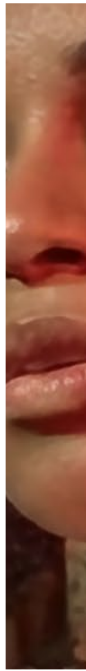


— ELEVATE YOUR SOUND —

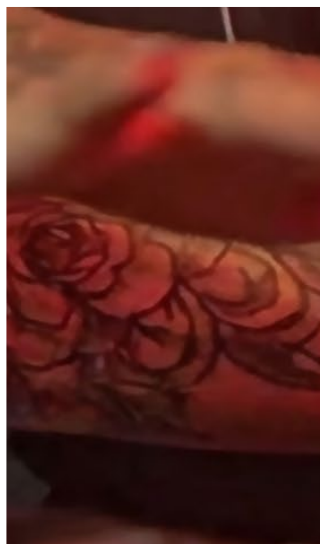




1	INTRO
2	ELECTROACOUSTICS
4	ELECTRONICS
6	DESIGN AND ERGONOMICS
8	DIGITAL TECHNOLOGIES
10	EVOX J9
12	EVOX J MIX9
16	EVOX J11
18	TECHNICAL SPECIFICATIONS
20	ACCESSORIES



Since their debut, EVOX systems have garnered acclaim for their sound quality, elegant design, and tour-proven reliability. The latest true-3-way architecture combines powerful, professional sound with a centered acoustic image that feels natural and balanced, with the focused precision of a point-source system. Inside, purpose-built RCF transducers and amplifiers deliver impressive SPLs and pristine audio. Outside, an unobtrusive, minimal enclosure—available in black or white finishes—disappears into any décor. Whether you're spinning tracks, playing in a band, performing on stage, or hosting a corporate event, there's an EVOX ready to deliver. Choose standard models for true plug-and-play simplicity—or step up to the EVOX J MIX9, with its integrated digital mixer, for full mix control wherever the music takes you.



WHEREVER THE MUSIC TAKES YOU





1.75" NEODYMIUM COMPRESSION DRIVER / TRUE RESISTIVE WAVEGUIDE
3" NEODYMIUM CONE TRANSDUCERS / HIGH-POWER 12" WOOFER



TRUE 3-WAY DESIGN

The new EVOX J features an innovative neodymium compression driver with a 1.75" voice coil and Kapton dome, loaded onto a True Resistive Waveguide with wide, constant 120° x 40° coverage. The array arrangement of 3" neodymium drivers ensures potent, forward midrange radiation that combines with the centered waveguide to deliver a natural, balanced point-source response. The 12" RCF transducer provides deep, controlled low frequencies, ideal for bass-heavy music and high-energy performances.

CONSTANT 120x40 COVERAGE

The True Resistive Waveguide (TRW) operates as a resonance-free, resistive acoustic load, eliminating the harshness often associated with traditional horn designs.



WHEREVER THE MUSIC TAKES YOU





MORE POWER, MORE HEADROOM / NEW GENERATION CLASS-D
DESIGN / INTEGRATED 8-CHANNEL STEREO DIGITAL MIXER



UP TO 2.5X MORE POWER

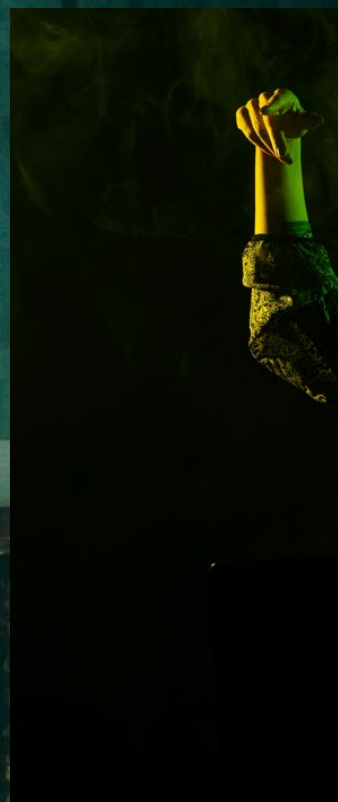
The new generation of 2-channel 2100 W and 3500 W Class-D amplifiers delivers up to 2.5X more power than the previous architecture, delivering extremely high sound pressure levels with ultra-fast attack, realistic transient response, and minimal thermal buildup.

8-CHANNEL STEREO DIGITAL MIXER

The JMIX9 model integrates a powerful 8-channel stereo digital mixer, delivering a complete, portable solution for performers, DJs, bands, and presenters. A bright 2.4" color touch display with physical encoders provides fast, intuitive access to all functions, while the JMixRemote app for iOS and Android enables wireless mixing and system management.



WHEREVER THE MUSIC TAKES YOU





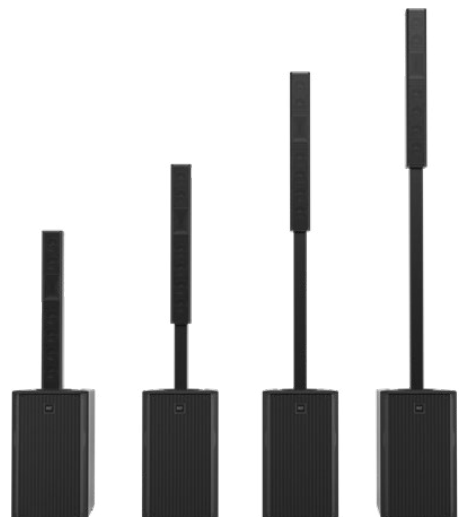
BLACK OR WHITE / LIGHTWEIGHT / PREMIUM MATERIALS
ERGONOMY / EASE OF SETUP / PORTABILITY

TOP PADDED CARRYING BAG INCLUDED

Neodymium drivers and advanced materials reduce overall weight, while ergonomic design choices improve handling. A padded carrying bag is included for the column array and its pole, and an optional trolley-style cover with wheels simplifies transport.

VARIABLE HEIGHT CONFIGURATION

Black or white finishes, refined design, premium-grade materials, and ergonomic details that maximize portability while preserving the EVOX family's sleek, familiar look. An included lightweight aluminum-alloy distance pole with integrated connections separates the top from the subwoofer; an optional half-size pole extension is available. Height is configurable: connect the column directly to the bass enclosure, or increase it with a full- or half-pole extension based on your audience.





WHEREVER THE MUSIC TAKES YOU



FIRPHASE / BASS MOTION CONTROL /
ACE FOR SUBWOOFER PAIRING

HIGH-POWER INTERNAL DSP

RCF speakers are designed with a proprietary, advanced digital technology called FIRPHASE, engineered to distribute sound to all listeners without phase distortion, ensuring minimal system latency. Bass Motion Control extends the lowest audible frequency without affecting the transducer's stability, limiting over-excursions for greater reliability and superior performance at high volume levels.

SUB AX ACE PRESETS FOR EVOX J

When extended, impactful low-end is required, simply add an RCF subwoofer.

ACE-enabled models, starting from the SUB AX Series, include dedicated integration presets for EVOX systems, ensuring perfect tuning at the touch of a button. RCF's Advanced Crossover Engine (ACE) precisely adjusts time delay and phase to optimize power and impact of the system.



EVOX J9 is an active, three-way portable column system designed for maximum clarity and power in a compact format. With a streamlined aesthetic, the premium composite design delivers unparalleled acoustic fidelity, raw power, and ease of deployment. EVOX J9 is the perfect fusion of Italian engineering and sophisticated design, ready to elevate any setting.

J9



EVOX J9

130 DB MAX SPL

2100 W CLASS-D AMPLIFIER

BUILT-IN DSP

1.75" NEO COMPRESSION DRIVER

120° x 40° TRUE RESISTIVE WAVEGUIDE

6 x 3" FULL-RANGE NEO TRANSDUCERS

12" RCF PRECISION LOW-FREQUENCY WOOFER

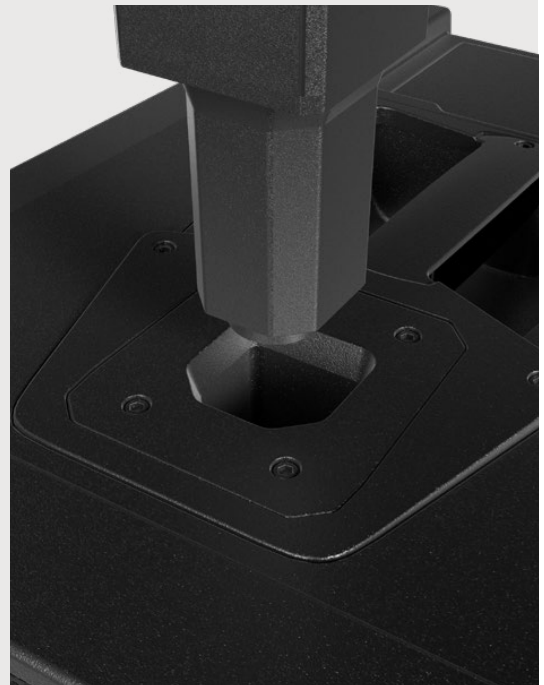


QUICK SETUP READY TO PLAY

Available in black or white, EVOX J9 includes a lightweight aluminum-alloy pole that links the column to the subwoofer and integrates all required connections for fast setup. Height is configurable, with the option to connect the column directly to the bass enclosure or increase height with full- or half-pole extensions.

BIG IMPACT, MINIMAL FOOTPRINT

EVOX J9 incorporates RCF's tour-grade technology into a sleek, unobtrusive package that delivers crystal-clear vocals, natural musical response, and effortless deployment for bands, DJs, and live performers.

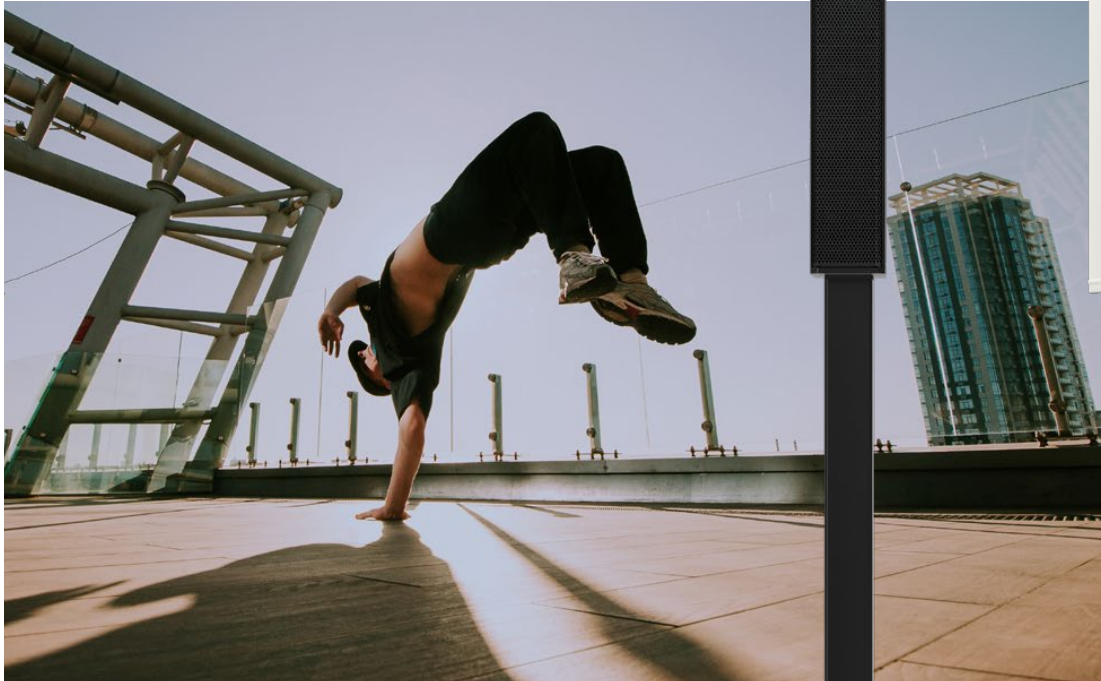


HIGH-DEFINITION ACOUSTIC PERFORMANCE

A 1.75" compression driver coupled with a 120° × 40° True Resistive Waveguide ensures wide, consistent coverage, while 6 x 3" full-range transducers and a high-power 12" woofer in a bass-reflex enclosure deliver articulate mids and deep, controlled lows. Powered by a 2-channel 2100W onboard Class-D amplifier, EVOX J9 delivers an impressive 130 dB Max SPL output. Three equalization presets are available: *Live/Linear* for perfectly flat, neutral output; *Club* for extended lows and crisp highs; and *Voice* for optimized intelligibility.

Combining the clarity and power of the J9 with digital mixing, flexible routing, and wireless management, EVOX JMX9 delivers professional performance across the entire signal chain. It's the ideal solution when a compact, all-in-one sound system is required. Best-in-class sound, power and reliability, with RCF-engineered components, premium materials, and a studio-quality signal chain.

JMIX9



EVOX JMX9

INTERNAL STEREO DIGITAL MIXER

130 DB MAX SPL

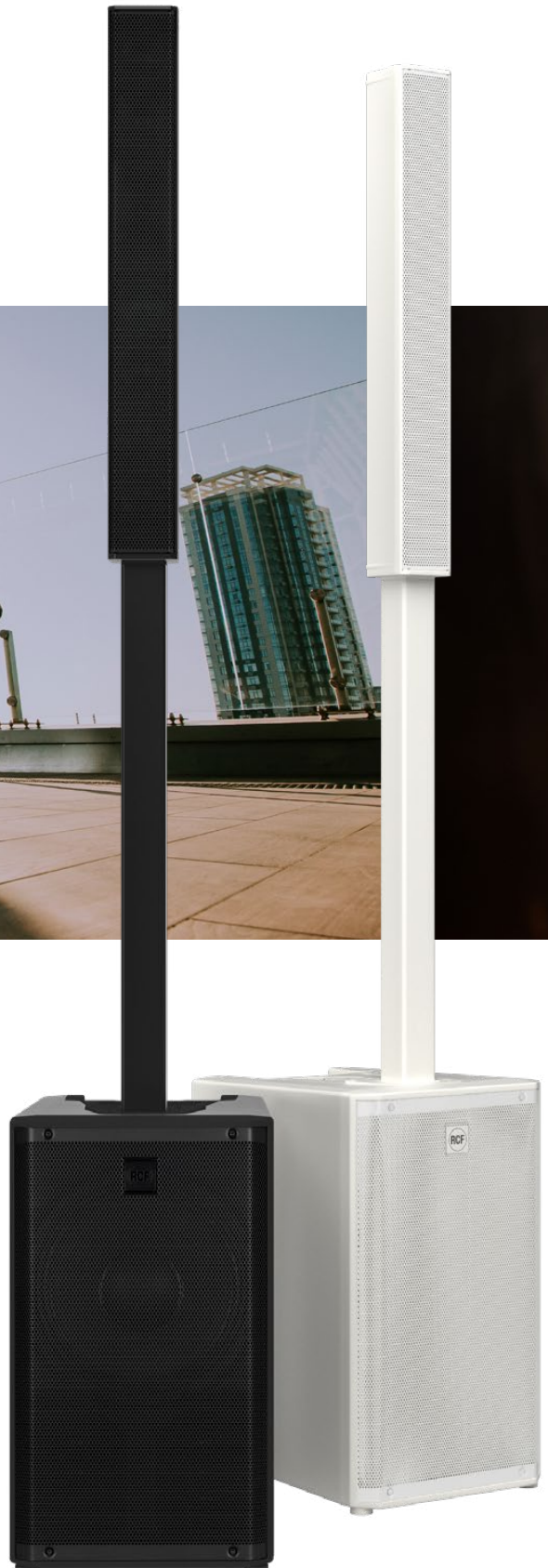
2100 W CLASS-D AMPLIFIER

1.75" NEO COMPRESSION DRIVER

120° x 40° TRUE RESISTIVE WAVEGUIDE

6 x 3" FULL-RANGE NEO TRANSDUCERS

12" RCF PRECISION LOW-FREQUENCY WOOFER

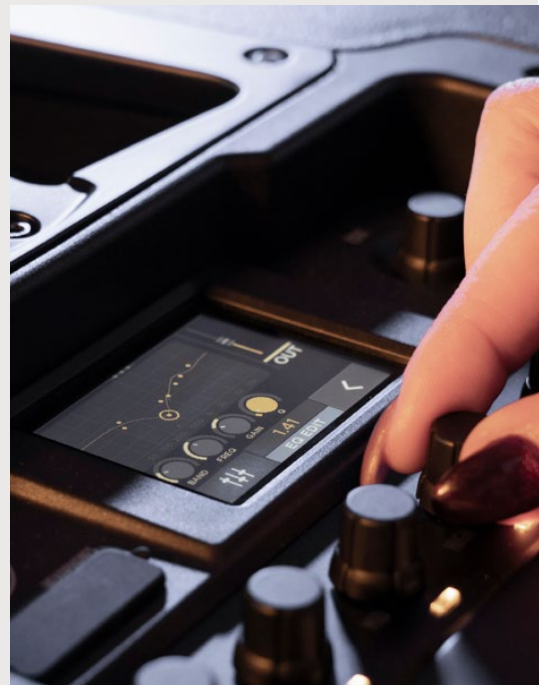


THE ALL-IN-ONE SOLUTION ANY VENUE, ANY EVENT

Compact yet powerful, available in black and white finishes, JMI9 is engineered to meet the needs of diverse environments, from intimate acoustic sets and DJ nights to corporate presentations, house-of-worship services, and celebratory events.

UNIFIED DESIGN VERSATILITY

Load-in and load-out are streamlined thanks to fast setup and teardown, reduced stage clutter, and minimal external equipment. With all essential tools built into a compact footprint, the system delivers maximum flexibility for any event.

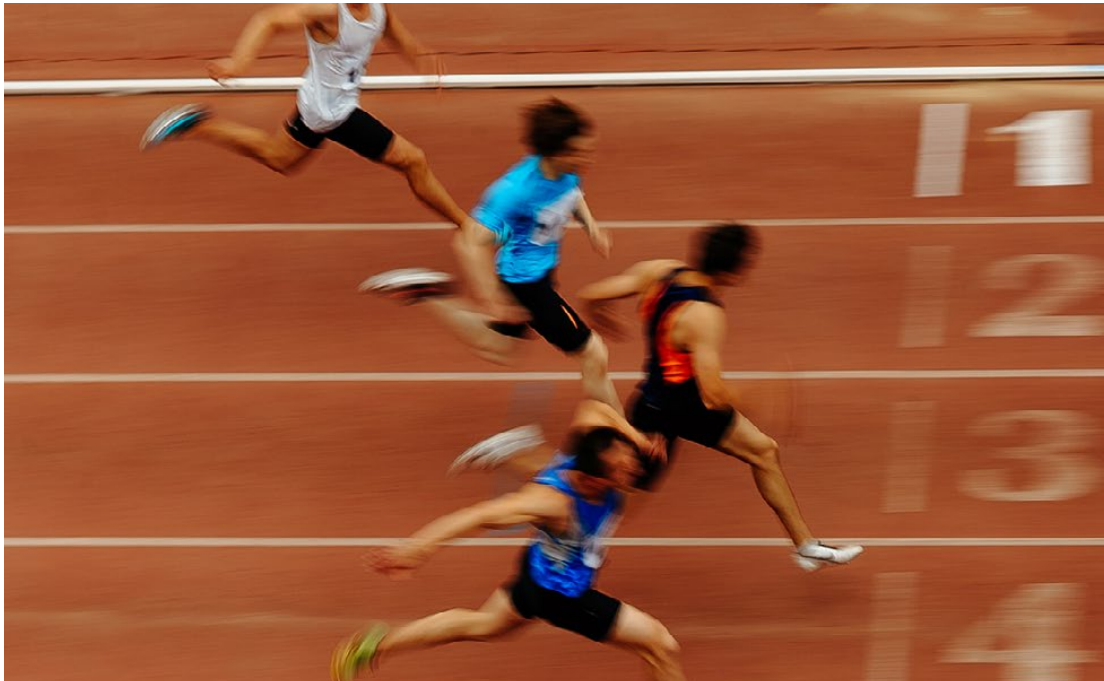


STUDIO-QUALITY INPUT SECTION

JMI9 is equipped with four MIC/LINE inputs with combo connectors, high-performance THAT® preamps, (each with individual phantom power) and digital gain control. Inputs 1–4 can be linked as stereo pairs for keyboards, instruments, or playback sources. Inputs 5–8 include a stereo TRS line input and a stereo 3.5 mm input shared with Bluetooth® connectivity for audio streaming. Each input channel offers a high-pass filter, compression, and a 3-band EQ for precise tonal shaping. Internal stereo reverb with individual send levels adds professional polish to vocals and instruments.

DESIGNED FOR PRACTICAL USE

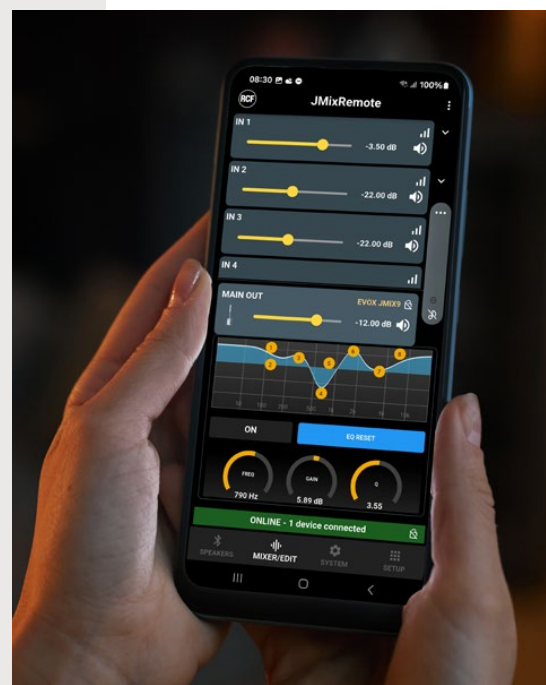
- > Mono/Stereo operation, with dedicated XLR out for stereo pairing with EVOX J9.
- > High-pass and a 3-band EQ on each channel, ch 1-4 add a one-knob compression.
- > Flexible Audio Ducker, Stereo Reverb send.
- > Main Output with stereo 8-band EQ.
- > AUX Bus with 8-band EQ, pre/post selection, and dedicated XLR output for monitoring, FX or additional output.





QUICK WORKFLOW CUSTOMIZATION

The 2.4" color touch display interface is optimized for clear, efficient control, complemented by high-quality endless encoders and gesture support for accelerated workflow. A dedicated Main Level control ensures straightforward control at all times. EQ Fast Edit provides instant access to EQ curves with automatic zooming for accurate parameter control. A fully assignable MULTI pushbutton gives quick access to essential tasks, including All Mute, Attenuation, FX Mute, Ducker and more. Scene save/load capability allows instant recall of performance setups. A screen-lock function prevents accidental changes during operation.



WIRELESS CONTROL J MIXREMOTE APP

The JMixRemote app provides complete wireless control of every function from any iOS or Android smartphone via Bluetooth® Low Energy (BLE) link. The app is compatible with both JMIX8 and JMIX9, ensuring a unified control experience across the EVOX series. An optional security PIN prevents unauthorized connections (JMIX9 only).

EVOX J11 is an active, three-way portable column system designed for maximum clarity and power in a compact format. Neutral and minimal, EVOX J11 stays out of the spotlight and simply delivers. Whether used in corporate spaces or at a party, the sound is clean, with high dynamics, vocal clarity, and a fast, controlled low end for both sitting and standing audience. Free-standing elegance, quick setup, and power at the highest level.

J11



EVOX J11

132 DB MAX SPL

3500 W CLASS-D AMPLIFIER, BUILT-IN DSP

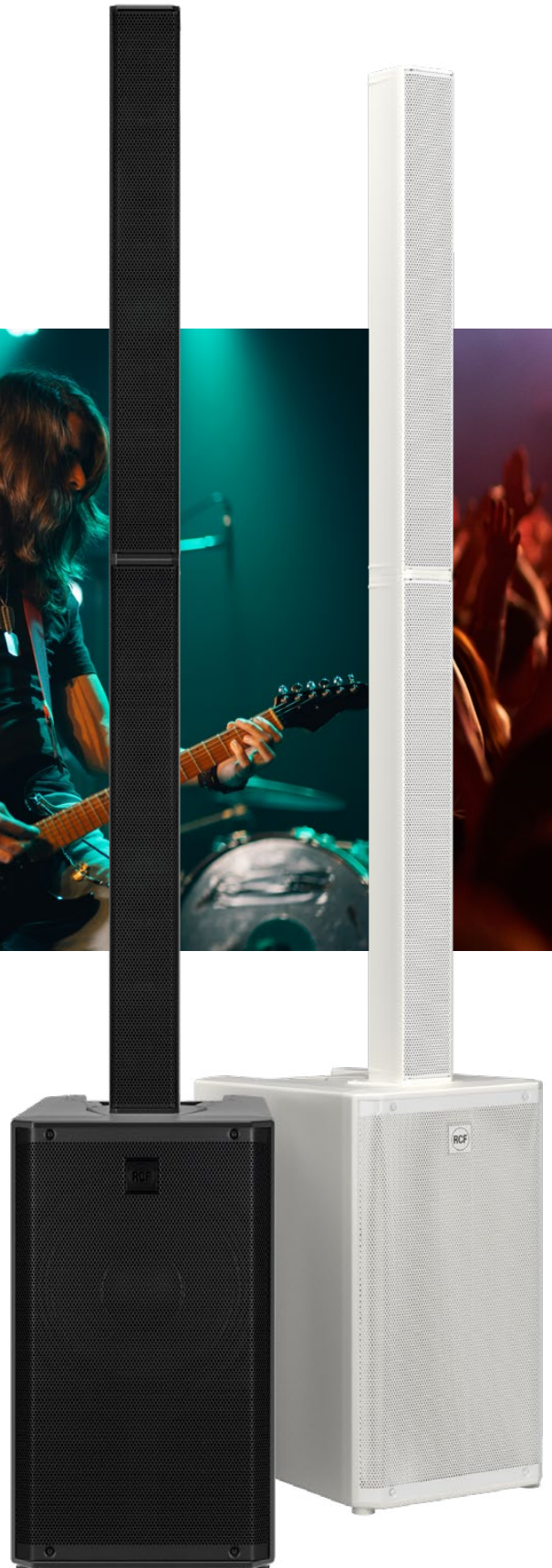
1.75" NEO COMPRESSION DRIVER

120° x 40° TRUE RESISTIVE WAVEGUIDE

12 x 3" FULL-RANGE NEO TRANSDUCERS

12" RCF PRECISION LOW-FREQUENCY WOOFER

POWERCON TRUE1-TOP MAINS CONNECTOR

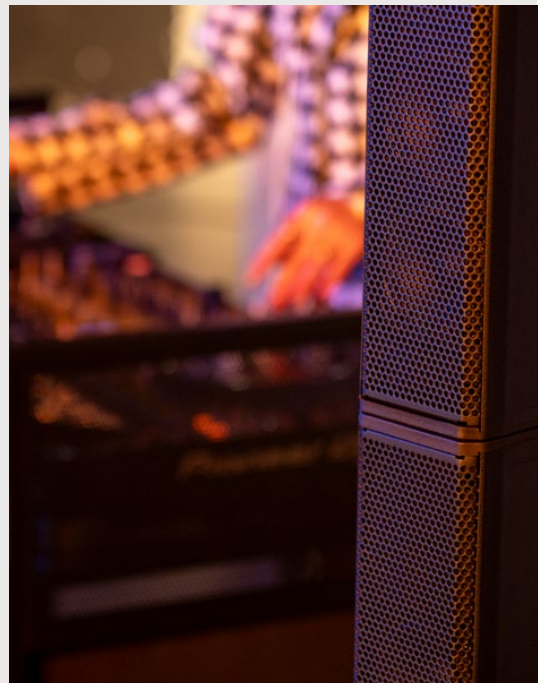


TRUE THREE-WAY COLUMN ARRAY

Through precise alignment of the waveguide and full-range transducer array, the EVOX J11 ensures a unified acoustic center, enabling the system to radiate as a single, coherent source. This advanced acoustic design, combined with FIRPHASE DSP, delivers phase-accurate response, outstanding intelligibility, and exceptional clarity throughout the listening area.

FAST, FLEXIBLE DEPLOYMENT

Available in black or white, EVOX J11 integrates all required connections for fast setup. Despite its power and size, its sleek design remains unobtrusive and neutral, blending into any environment. The included padded carrying bag for the two-piece column array makes moving the system effortless.



TOUR-GRADE COMPONENTS

A 1.75" compression driver coupled with a 120° × 40° True Resistive Waveguide ensures detailed, robust high frequencies, while 12 × 3" full-range transducers and a high-power 12" woofer in a bass-reflex enclosure deliver immersive mids and deep, potent lows. Driven by a 2-channel 3500 W onboard Class-D amplifier, EVOX J11 delivers an impressive 132 dB Max SPL output. Four equalization presets are available: *Live* for intelligible balance in real-world setups, *Linear* for perfectly flat, neutral output; *Club* for extended lows and crisp highs; and *Voice* for optimized intelligibility.

EVOX J SERIES TECHNICAL SPECIFICATIONS

EVOX J9 / JMIX9

EVOX J11

ACOUSTICAL SPECIFICATIONS

Frequency Range	40 Hz - 20000 Hz	37 Hz - 20000 Hz
Max SPL @ 1m	130 dB	132 dB
Horizontal Coverage Angle	120°	120°
Vertical Coverage Angle	40°	40°

TRANSDUCERS

Compression Driver	0.75" neo, 1.75" v.c	0.75" neo, 1.75" v.c
Fullrange	6 x 3.0" neo, 1.0" v.c	12 x 3.0" neo, 1.0" v.c
Woofer	12", 2.5" v.c	12", 2.5" v.c

INPUT/OUTPUT SECTION

Input Signal	bal/unbal	bal/unbal
Input Connectors	Combo XLR/Jack	XLR, Jack
Output Connectors	XLR	XLR
Input Sensitivity	-2 dBu/+4 dBu	-2 dBu/+4 dBu

PROCESSOR SECTION

Crossover Frequencies	200 Hz/1800 Hz	160 Hz/1800 Hz
Protections	Thermal, RMS	Thermal, RMS
Limiter	Soft Limiter	Soft Limiter
Controls	Volume. Presets: Linear/Live, Club, Voice	Volume. Presets: Linear, Live, Club, Voice

POWER SECTION

Total Power	2100 W Peak	3500 W Peak
High Frequencies	700 W Peak	1500 W Peak
Low Frequencies	1400 W Peak	2000 W Peak
Connections	VDE	PowerCON TRUE1 IN/OUT

PHYSICAL SPECIFICATIONS

Cabinet/Case Material	PP Composite	PP Composite
Handles	1 Top	1 Top
Grille	Steel	Steel
Color	Black, White	Black, White
Height	2080 mm / 81.89 inches	2080 mm / 81.89 inches
Width	350 mm / 13.78 inches	350 mm / 13.78 inches
Depth	462.6 mm / 18.21 inches	462.6 mm / 18.21 inches
Weight	26.5 kg / 58.42 lbs	29 kg / 63.93 lbs

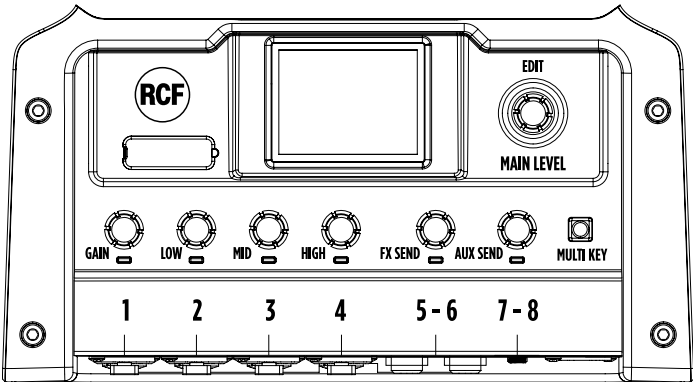




EVOX JMIX9

MIXER SPECIFICATIONS

Digital Processing	48 kHz Sample Rate, 32-bit DSP
Audio Inputs	4 MIC / LINE input with programmable gain (COMBO) 1 stereo LINE input (TRS) 1 stereo LINE input (3.5 mm minijack) 1 stereo Bluetooth audio streaming input (Bluetooth® 5.3)
Audio Outputs	MIX OUT (XLR, balanced, on amplifier panel) AUX OUT (XLR, balanced, on mixer panel) Headphones Output (3.5 mm minijack)
Other Ports	USB C: 500 mA charger and firmware update port
User Interface	2.4" Color Display with capacitive touch 7 endless encoders and programmable pushbutton
Remote Control	JMixRemote app for iOS and Android smartphones, via BLE
Input Channel processing	HPF, 3-band equalizer, 1-knob compressor (ch 1-4 only)
Internal Effects	Digital Stereo Reverb with send level controls for each input Ducker with multiple source selection
Main Output	8-band parametric equalizer; alignment delay up to 45 m; stereo or mono mode
Aux Output	Level controls for each input, global pre/post selection, and 8-band parametric equalizer
Headphone Output	Assignable to Aux Output or Main Output, with 3-band equalizer



Android and Google Play are trademarks or registered trademarks of Google LLC.
iOS is a trademark used under the license of Cisco Systems Inc. of the U.S.A.
App Store is a service mark of Apple Inc.
The Bluetooth® word mark and logos are registered trademarks owned by Bluetooth SIG, Inc. and any use of such marks by RCF is under license. Other trademarks and trade names are those of their respective owners.
2025 Copyright ® RCF S.p.A. All rights reserved

EVOX J SERIES ACCESSORIES

Every EVOX system includes a padded column transport bag for essential protection. To complete your setup, add an aluminum half-pole extension for quick and flexible height adjustments. For enhanced transport and storage, choose the optional protective subwoofer cover or the trolley-style cover with wheels for easy mobility. All RCF transport and protection accessories are crafted from premium 600D polyester, feature 10 mm foam padding and a 190T taffeta inner fabric, and are secured with a durable zip-and-Velcro closure for long-lasting reliability.



PMK60768
PN 13360768
Pole Extension Kit
Black

PMK60770
PN 13360770
Pole Extension kit
White



Top Speaker
Padded Carrying Bag
supplied with all models



CVR60752
PN 13360752
Protection Cover



CVR60751
PN 13360751
Protection Cover with wheels





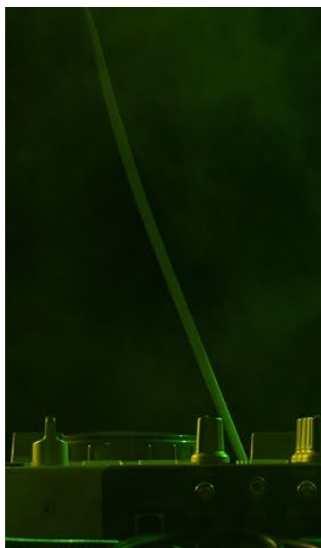
EVOX J9			pn		
100-120 V	Black	13000929			
100-120 V	White	13000984			
220-240 V	Black	13000928			
220-240 V	White	13000983			

EVOX JMX9			pn		
100-120 V	Black	13000931			
100-120 V	White	13000986			
220-240 V	Black	13000930			
220-240 V	White	13000985			

EVOX J11			pn		
100-120 V	Black	13000933			
100-120 V	White	13000988			
220-240 V	Black	13000932			
220-240 V	White	13000987			



— ELEVATE YOUR SOUND —



RCF S.p.A. Italy

tel. +39 0522 274 411 / e-mail: info@rcf.it

RCF UK

Int. +44 (0) 1702 800846 / e-mail: info@rcfaudio.co.uk

RCF France

tel. +33 9 86 02 73 52 / e-mail: france@rcf.it

RCF Germany

tel. +49 (0) 2203 925370 / e-mail: sales@rcf.de

RCF Spain

tel. +34 91 817 42 66 / e-mail: info@rcfaudio.es

RCF Benelux

tel. +49 (0) 2203 9253724 / e-mail: benelux@rcf.it

RCF USA Inc.

tel. +1 732-9026100 / e-mail: info@rcf-usa.com

All data, specifications, and designs are provided for reference only and are subject to change without prior notice.