



INSTALLED SOUND SOLUTIONS

CONTENTS

RCF Installed Sound	pag.	4
---------------------	------	---

A click on the name of the installation leads directly to the catalog page.

CASE STORIES

Minack Theatre - Penzance (UK)	pag.	7
QC New York - New York (USA)	pag.	9
Rotunda Church - Mosta (Malta)	pag.	11
Nottingham Sports Bar - Nottingham (UK)	pag.	13
Aula Magna Parma University - Parma (Italy)	pag.	15
Wałcz's Sports Hub - Wałcz (Poland)	pag.	17
Hall of Combat Sports - Wrocław (Poland)	pag.	18
Manō Poké Hawaiian Restaurant - Modena (Italy)	pag.	18
Kalem by Zak - Novi Sad (Serbia)	pag.	19
Loft Rooftop - Novi Sad (Serbia)	pag.	19

A click on the line name leads directly to the catalog page.

PRODUCT SERIES

COLUMN SPEAKERS	pag.	22
HVL SERIES	pag.	24
HL SERIES	pag.	26
Q 15 SERIES	pag.	28
COMPACT C SERIES	pag.	30
C SERIES	pag.	31
COMPACT M SERIES	pag.	32
COMPACT A SERIES	pag.	34
MAX SERIES	pag.	36
P SERIES	pag.	38
SUB SERIES	pag.	40
MONITOR SERIES	pag.	42
DMA SERIES AMPLIFIERS	pag.	44
XPS AMPLIFIERS SERIES	pag.	46
QPS AMPLIFIERS SERIES	pag.	48
IPS AMPLIFIERS SERIES	pag.	49
ELECTRONICS	pag.	50
RDNet CONTROL	pag.	51

Subsequently, by clicking on the name of the article on the following pages, you can open the page of the RCF website dedicated to the product.

INDEX AND PART NUMBERS	pag.	52
------------------------	------	----

RCF Installed Sound

WE CARE ABOUT YOUR SOUND

RCF is a leading technology brand of professional audio equipment, transducers, electronics, DSP, and custom solutions for any sound and any place. Established in Italy in 1949, RCF has been committed to the perfect reproduction and amplification of sound for events and concerts, recording, public address, broadcast, and portable audio. RCF has consistently transformed the pro-audio industry, developing components and products in-house to ensure maximum quality and reliability to the end-user. The comprehensive catalog covers all aspects of the audio chain to satisfy sound engineers, architects, and system integrators.

A REFERENCE IN INDUSTRY

RCF is always at the forefront of technologies and materials research, providing tools, documentation, technical support to help professionals deliver optimized sound to the listener. Training activities for all audio professionals and enthusiasts draw into 70 years of experience and knowledge of its engineers. The internal support engineering team is on hand to assist architects, system designers, or integrators during the design and customization of complex systems. Tangible technical expertise, modern Italian manufacturing facilities, and continuous technological refinement set RCF as an essential reference for all audio professionals and enthusiasts. RCF supports customers in its offices in the United States of America, France, Germany, Italy, Spain, the United Kingdom, and a network of more than hundreds of trusted distributors throughout the rest of the world.

RCF SOUND CULTURE

RCF is a leading technology brand of professional audio equipment, transducers, electronics, DSP, and custom solutions for any sound and any place. Established in Italy in 1949, RCF has been committed to the perfect reproduction and amplification of sound for events and concerts, recording, public address, broadcast, and portable audio. RCF has consistently transformed the pro-audio industry, developing components and products in-house to ensure maximum quality and reliability to the end-user.

ENGINEERED FOR HUMAN BEINGS

The Installed Sound range represents a prominent chapter in the company's long history, continuously expanding one of the most comprehensive product portfolios offering dedicated integrated audio solutions with superior acoustic performance. This catalog includes speaker systems designed to meet all pro-audio contractors requirements for fixed installations like café or theme bars, retail outlets, places of worship, theatres, restaurants, live venues, dance clubs, theme parks, airports, hotels, railway stations, shopping malls, auditoriums, congress centers, sporting facilities, stadia, etc.

FOREFRONT TECHNOLOGY

Innovation comes first and foremost, thanks to the RCF R&D team, developers of many original products and technologies, such as the hyper-venting system, the inside/outside voice coil, the dual silicone spiders, and countless mechanical, digital, and leading-edge electronic solutions. RCF is one of the few loudspeaker companies worldwide that internally manufacture transducers, speaker systems, electronics, and software. All products feature RCF's exclusive designs and technologies.





Minack Theatre - Penzance (UK)

The world-famous Minack Theatre recently upgraded its audio system with RCF weatherproof loudspeakers. The picturesque, open-air theater, which overlooks Porthcurno Bay near Cornwall, England, needed a loudspeaker system with a robust Ingress Protection (“IP”) rating to withstand the location’s corrosive marine conditions and deliver high definition, theater-caliber audio.

Simon Hutchings, the Minack’s Technical Manager, knew that the existing system, in use for over 25 years, was delivering diminishing audio quality for the theater’s wide range of musical and theatrical performances. He turned to Stage Electrics, reinforcing a partnership that has lasted for many years, to find a new system that would ensure the theater’s patrons could enjoy a higher-quality audio experience.

“When we made the inevitable decision to replace our performance speaker system at the Minack, we were always going to call Stage Electrics. Having worked with them for over 15 years, we knew they’d give us the best price, without needing to haggle.” said Hutchings. “We trusted the products Stage Electrics recommended would be right for us. So, with the combination of price and quality of solution, Stage Electrics offered by far the best value. Their customer service is impeccable, the whole process ran smoothly without any major hiccups. Which considering we started during lockdown is quite something!”

The Minack’s new system consists of 20 RCF MQ80P’s, 23 RCF P3108’s and 2 RCF P8105S weatherproof subwoofers, along with spare units for immediate support. In just a week, the team replaced every loudspeaker, repaired or replaced weathered rigging and electrical connections and commissioned the new system to deliver significantly improved audio to every seat in the theater.

RCF P Series was the best choice for its superior musical reproduction, clear speech delivery and high IP rating. All P Series models include stainless steel bracketry, powder-coated aluminum grilles, and water-repellent and UV-protected materials, making them the obvious choice for the challenging marine environment at the Minack. The series includes coaxial, point and line source loudspeakers, and subwoofers, all housed in IP55 rotomoulded cabinets with stainless bracketry. For areas that were difficult to cover, the Minack installed RCF MQ80P’s which offer wide dispersion and a small footprint, while still meeting the venue’s weatherproof requirements. Two-way P3108’s, distributed evenly around the venue, feature high-powered 8” woofers and 1-inch compression drivers, delivering high SPL from a small cabinet. P8015S 15” subwoofers provide low-frequency support.

Tom Martin from RCF added, “It was exciting for RCF to be chosen for such a prestigious venue such as the Minack. The venue holds a multitude of events over the year and is naturally stunning, so it needed an audio solution to match. I was absolutely confident of the P series’ ability to deliver on this and going by reviews since the installation, it is exceeding expectations. Ordinarily, it isn’t an easy task for a highly weatherproof solution such as this to match the capability of a conventional system, especially over time in an extremely harsh environment but the P Series has met and exceeded that demand.”

A year after the installation, the RCF system continues to withstand the elements, with no units failing. The system consistently delivers exceptional audio quality, much to the delight of patrons and industry professionals.

Products installed



MQ 80P



P 8015S



P 3108



QC New York - New York (USA)

Nestled on Governors Island, just five minutes from downtown Manhattan, QC New York Spa offers a tranquil escape with its panoramic outdoor pools and stunning city skyline views. Open all year, this spa destination now provides an enhanced auditory experience with a new RCF sound system, elevating both the ambiance and the auditory experience for visitors.

The installation incorporates a range of RCF products from the Installed Sound Series, suited for both indoor and outdoor settings, within the spa. Selected audio solutions include the compact DM 41, weather-resistant MR 50T and MR 40T speakers, driven by ES 3080 and DMA 162 matrix power amplifiers. The system's connection topology is designed to support diverse playlists across various rooms, fine-tuning the sound for various moods and spaces.

"A notable feature of the spa's winter setup is the use of MR 40T speakers, designed for weather resistance, to ensure that the sound quality remains pristine in all weather conditions." Says Luca Artoni from the RCF Engineering Support Group, who managed the technical aspects of the system. "These speakers are part of a unique system in a temporary tunnel that connects the building exits to the outdoor pools during colder months, shielding guests from the chill while ensuring a seamless sound experience."

Gilles Cheney, Audio Video Designer of QC Spa of Wonders, expresses his satisfaction with the RCF installation at QC New York: "The quality of sound and the smooth installation process have been essential in enhancing our spa's atmosphere. The RCF system complements the natural surroundings of Governors Island and enriches our guests' experience by delivering clear and well-balanced audio throughout our outdoor spa areas."

By choosing durable, high-quality equipment capable of handling the challenges of hot, cold and humid settings, QC New York Spa secures its place as a top-tier relaxation destination for locals and tourists alike in New York City. This careful incorporation of sound technology not only complements the physical luxuries of the spa but also plays a crucial role in creating an overall atmosphere that invites tranquility and relaxation.

Products installed



ES 3080



DM 41



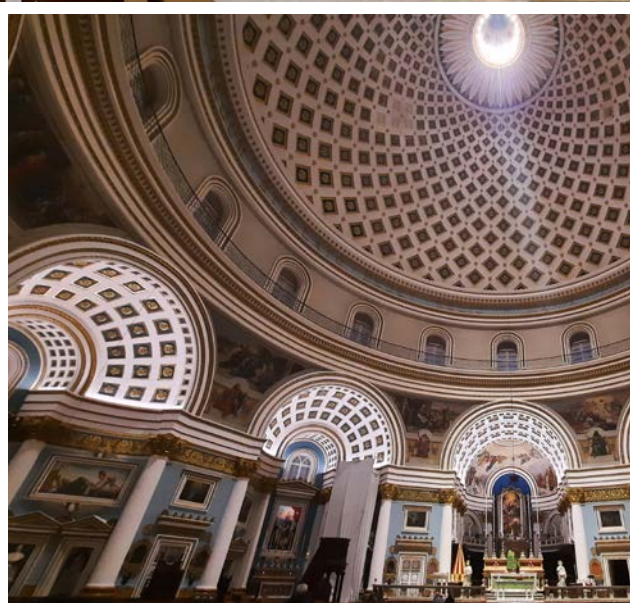
DMA 162



MR 50T



MR 40T



Rotunda Church - Mosta (Malta)

The Mosta Rotunda is a circular neoclassical church located in the Maltese town of Mosta. The RCF Engineering Support Group collaborated with RCF's local distributor, "The Sound System Co Ltd," which was tasked with installing and optimizing the renewed sound system of the church. The installation consisted of eight microphones connected to an RCF M18 digital mixer, two RCF VSA active steerable columns, and infill speakers, as part of the renovation of the church's internal audio system. The team worked to ensure even and optimized intelligibility across the entire seating area, despite the persistent reverberation caused by the church's architecture.

Designed by Giorgio Grognet de Vassé and built in the 19th century, the Mosta Rotunda boasts a dome that is 37 meters in diameter, inspired by the Pantheon in Rome. It's the 3rd largest unsupported dome Church in the world. During World War II, the church was struck by a bomb that pierced the dome and fell among the 300 worshipers in prayer but did not explode, an event known as the Miracle of Mosta. Today, the Mosta Rotunda is not only a place of worship but also a popular tourist attraction with its stunning architecture and rich history.

To reduce reflections that could negatively impact speech intelligibility, the optimal solution was to install a single line source using the digitally controlled VSA column array. This system relies on powerful digital signal processors (DSPs) to direct the audio signal of each speaker towards the listening area. The VSA column array is a multi-amplified vertically steerable array, which means that each individual speaker is separately amplified and digitally controlled, so the sound can be vertically tilted without inclining the cabinet. Additionally, it is fully compatible with RDNet, the proprietary RCF speaker management software. The installation includes a main VSA 2050 II aimed far-field, mounted on top of a VSA 1250 II used as a downfill. Both arrays are fixed to the wall.

Francesco Venturi, system engineer of the RCF ESG, illustrates the optimization workflow: "We started by acquiring far-field STIPA measurements and optimized VSA 2050 II beaming and tilting by accessing the speaker configuration, using an RCF Control2 interface and RDNet software," said Venturi.

Once the beaming preset was optimized, the team performed FFT measurements to acquire transfer functions magnitude plots to tune VSA 2050 II frequency response upon Church acoustics. Venturi continues, "We shaped VSA 2050 II response by acting on the DSP parametric equalizer, using RDNet software. The process was then repeated for the near-field VSA 1250 II steerable array, first configuring the beaming preset, then optimizing the response".

After tuning, the speaker system was able to provide rich and accurate voice reproduction with an even intelligibility figure above 0.50 (inside the empty church). The RCF M18 digital mixer allowed optimization for each microphone for gain, gate, and EQ settings.

"The improvement in intelligibility with the new RCF steerable array audio system is truly remarkable!" exclaimed Jon Vella Zarb of The Sound System Co Ltd. Locally, the church is notorious for its poor acoustics, RCF rose to the challenge and the VSA system truly exceeded my expectations, providing excellent audio to the Mosta's congregation!"

Products installed



VSA 2050 II



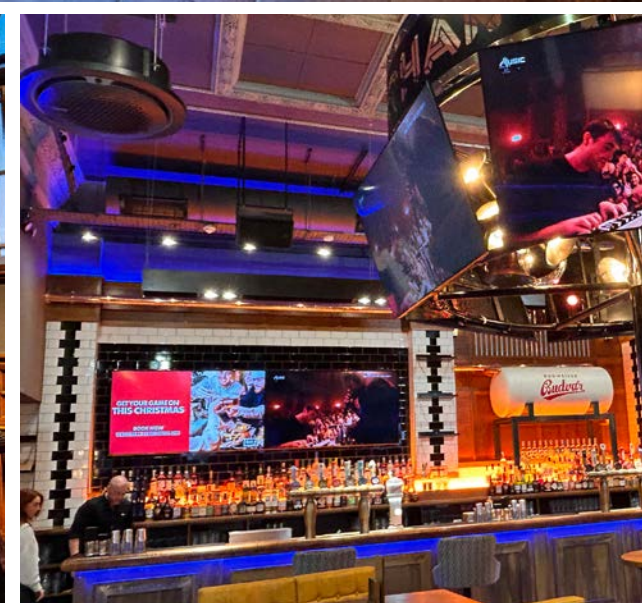
VSA 1250 II



DM 61



M 18



Nottingham Sports Bar - Nottingham (UK)

North of England based leisure operators ARC Inspirations have developed three different brands, spread across 21 units. One of these is BOX, a growing collection of award winning, high-octane, American style, city centre sports bars. The latest 650-capacity unit in Nottingham opened recently in a Grade II-listed former bank building, to reveal an RCF HDL 10-A active line array, installed by Pro Technical (UK) Ltd.

This is proving ideal for the venue's extensive schedule of entertainment and events, including Thursday night's 'Bandeoke' sessions, with a live band providing the backing track for all-comers taking the open mic.

Commenting on the results, Arc Inspirations Head of Bar Operations, Mark Austin, said: "Music and sound quality is utterly critical to a venue like this, as it sits at the heart of the guest experience that we create. This is a large, complex and historic building, and so our requirements of the system were demanding.

"We needed something absolutely brilliant, and that is what we've got – we couldn't be happier with the results."

Stated Pro Technical director, Richard Anderson, "When leading this element of the build with Arc, we chose RCF for the range of products needed to provide sound coverage and clarity in a Grade II-listed rotunda. HDL 10-A's were deployed in this area to control the sound dispersion and minimize reflections."

Two hangs of two HDL 10-A elements were provided, with these stylish composite cabinets powered by 1400W peak power amplification. LF extension was provided for the stage area in the form of S8015LP 15" bandpass low-profile subwoofers. As Anderson explained, "The bass for the stage area required a sub speaker unit with a low height, so we used the 8015LP sub speakers under the stage."

Four additional S 8015LP's were then distributed under fixed seating throughout the venue—which is precisely what they were designed for.

For the main bar area 10 of RCF's COMPACT M 10 (300W RMS) were used for full range sound reinforcement with 16 additional M 08 (200W RMS) units distributed around the room—both units producing a wide 90° x 70° dispersion pattern. A further six M 06 complete the COMPACT series deployment, while a pair of RCF S 12 bass reflex subwoofers boost the low frequencies where required.

The installer was aware of the sensitivity required in a two-storey venue, dominated by a mirrorball redolent of retro disco, and designed by famous local architect Watson Fothergill.

Summing up, Richard Anderson said, "We chose RCF because of its rich history in delivering high-quality audio and precision drivers, which have always proven to be reliable.

"Their different ranges of speaker solutions always provide us with the necessary tools to deliver optimum sound to our clients."

Products installed



S 12



S 8015LP



HDL 10-A



COMPACT M 10



COMPACT M 08



COMPACT M 06



Aula Magna of Parma University - Parma (Italy)

The Aula Magna of the University of Parma is one of the most important places for academic life in the city. Located at the Palazzo Centrale in Via Università, this building was the center of the Jesuit College since medieval times, becoming the headquarters of the University of Parma, starting from the mid-eighteenth century. Today it hosts, in addition to the Department of Law, Political and International Studies, also the Rectorate and the offices of the central administration of Parma.

Recently, the Aula Magna has undergone an important modernization to their audio system, providing for the installation of high-quality audio systems that guarantee maximum intelligibility, while maintaining a low profile in an environment of historical importance. The University selected local integrators Casa Musicale Varese for the task based on their proven experience in this field.

With the aim of optimizing the installation and audio quality, Casa Musicale Varese relied on the expertise of the team of engineers from the Engineering Support Group of RCF, who developed the best acoustic performance by suggesting the amplified column array speakers of the VSA Series (Vertical Steerable Array). "For this particular acoustic project we were inspired by the most recent research published by one of the professors of the University of Parma, Angelo Farina, an illustrious Italian mind known throughout the world for his work in acoustics and electroacoustics," says Michele Begotti of RCF ESG. "The room was reconstructed in 3D format to simulate the acoustic behavior of the suggested audio system, calculating all the parameters depending on the room, intelligibility, and sound pressure levels provided by the system. The various materials of the walls (wood, acoustic panels, masonry walls, etc.) were modeled to obtain the best possible simulation."

The VSA Series embodies the characteristics of digital control of directivity, and are able to maximize the ratio between direct field and reverberant field, a crucial point for an acoustically critical environment. In particular, two RCF speaker models were chosen: VSA 2050 II and VSA 850 II. Both models are equipped with an advanced DSP for controlling vertical acoustic dispersion, with the first facing the seats and the second facing the speakers. The ability to control vertical acoustic dispersion by being able to "aim" and "project" the sound onto predetermined areas has allowed the vertical installation of wall-mounted speakers at a relatively high height, for a reduced impact and perfect aesthetic compliance.

Alessandro Secchi, head of Casa Musicale Varese comments, "With this important modernization work, the Aula Magna of the University of Parma is now equipped with an ultra-high quality audio system, capable of guaranteeing perfect voice intelligibility for any type of academic event held in this prestigious space."

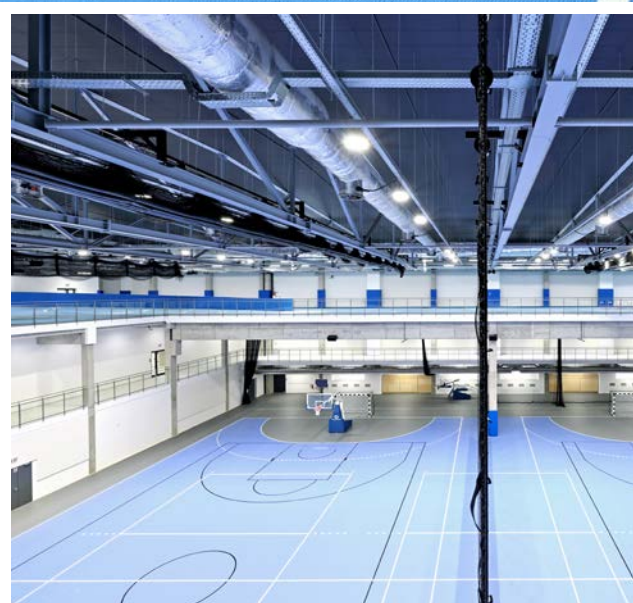
Products installed



VSA 2050 II



VSA 850 II



Wałcz's Sports Hub - Wałcz (Poland)

The Central Sports Center in Wałcz is a modern, multifunctional training hall acclaimed as one of the most advanced sports facilities in Europe. Completed in partnership with the Ministry of Sport and Tourism, the center known as COS stands as a beacon of excellence and innovation in the sports world, offering unmatched conditions for a wide array of disciplines ranging from basketball, volleyball, handball, indoor hockey, badminton, futsal, to martial arts and fencing.

Inside, specially designed areas are available for martial arts such as judo, wrestling, karate, and fencing, as well as a circular athletics track measuring 200 meters in length and a 60-meter sprint track. Covering a built area of 4,861 m², COS also provides access to a modern gym, changing rooms, wellness and recovery areas, and storage and technical spaces.

The new RCF sound system at COS Wałcz not only improves safety and information during sports events and other gatherings but also significantly affects the atmosphere within the halls, encompassing 8 zones spread throughout the complex, and guarantees crystal-clear sound in every corner of the facility.

Utilizing the full-range RCF COMPACT M series speakers, waterproof P 1108T models, and elegantly designed PL 8X ceiling speakers lays the foundation for a sound system that ensures perfect sound distribution throughout the sports complex.

The COMPACT M series delivers exceptional sound clarity, essential not only during sports competitions but also for events and concerts. The waterproof, full-range two-way P 1108T speakers are perfect for outdoor applications and areas prone to moisture, ensuring sound quality remains consistent during any season.

Audio routing and control are managed with a Yamaha MTX5D matrix processor, directly feeding RCF's high-performance IPS series amplifiers. TOMMEX, the official RCF install products distributor for Poland, provided a comprehensive delivery and implementation of the system.

Prodotti Installati



PL 8X



IPS 2.5K

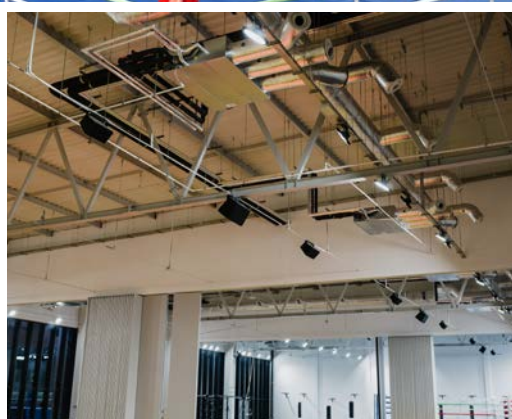


P 1108T



COMPACT M 10

Hall of Combat Sports - Wrocław (Poland)



Products installed



PR 4093

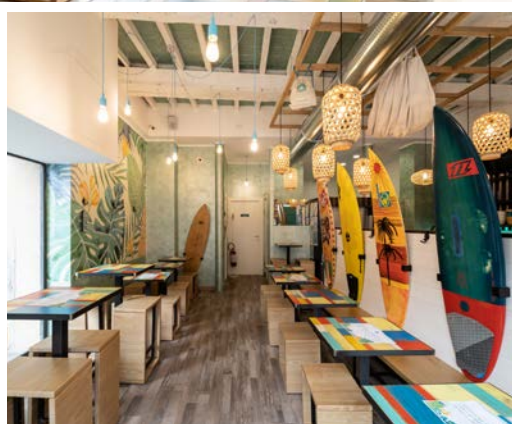


COMPACT M 12



COMPACT M 10

Manō Poké Hawaiian Restaurant - Modena (Italy)



Products installed

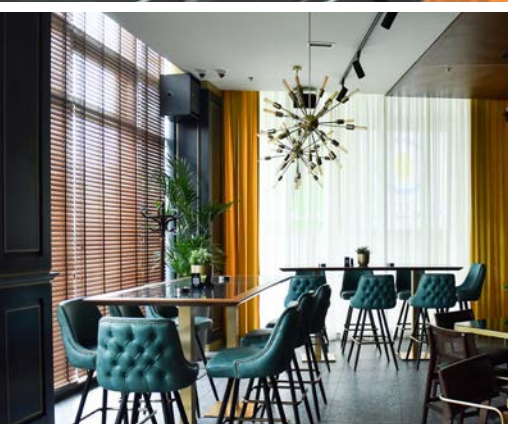


MR 40



DMA 162

Kalem by Zak - Novi Sad (Serbia)



Products installed



MQ 80P



S 4012



M 501



DPS 604X

Loft Rooftop - Novi Sad (Serbia)



Products installed



M 601



MQ 80P



S 5012



DPS 604X

Antrim Forum - Belfast (United Kingdom)



Products installed



P 2110T



M 801



DM 41



PL 8X

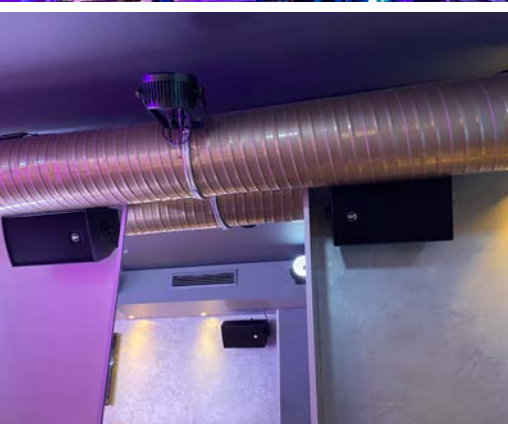


PL 6X



IPS 1700

Exile - Cologne (Germany)



Products installed



C 3108-96



C 3110-96



C 5212-64



C 5212-66



S 10

Harley Davidson - Bergamo (Italy)

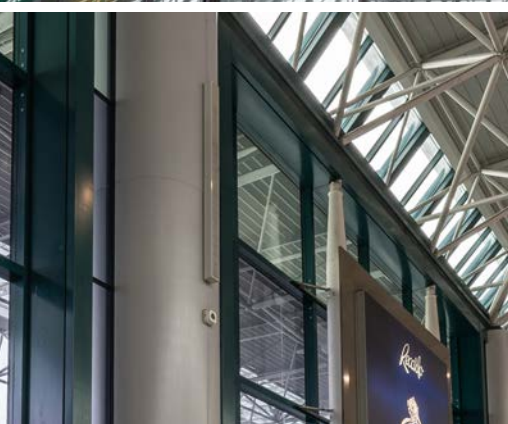


Products installed



COMPACT M 10

Fiumicino Airport (Italy)



Products installed



VSA 2050 II

COLUMN SPEAKERS

ACTIVE STEERABLE COLUMN ARRAY

Advanced column array speakers with fixed or controllable vertical directivity. Suitable for acoustically critical applications or spaces with architectural constraints.

The VSA II system allows the audio signal to be addressed exactly to the listening area, avoiding the radiation of the acoustic energy to ceilings and empty floors; this eliminates any bad reflections that would affect speech intelligibility, mainly in critical environments with high reverberation. VSA offers a precise directivity and control to give high intelligibility performance with wide frequency response, high-dynamics and coherence at distance. Thanks to the reliable and powerful amplifiers, the accurate speaker design, and the high efficiency of the digital technology, VSA II is able to achieve an extended and stable coverage, preserving at the same time a smooth uniform horizontal coverage.

RDNET

The RCF RDNet is the perfect tool to help you to configure your VSA II system setup in any venues. The software helps to monitor and control all individual speakers with its own DSP setting and to secure the best performance of the system configuration. RDNet is a secure and robust management for small, medium, and arena-sized sound systems as well as complex and extended installations. Based on a proprietary network protocol RDNet provides straightforward monitoring and intuitive control of the RCF audio system down to every connected device/object.

VSA SMART RC

The VSA-RC is an easy way to control the VSA speakers through the VSA Remote App available on iOS or Android. The following data are configurable on each VSA through the VSA-RC remote control:



VSA 2050 II

- 20 x Class D, 50 W amplifiers
- 96 dB SPL Max
- 650 W RMS Power
- 1300 W Peak Power
- 100 ÷ 18000 Hz Freq. Range
- Vertical Coverage Beam from 10° to 30°
- Vertical Steering from 0° to -40°
- 20 x 3.5" neo full range speakers
- Standard installation accessories included
- Extruded aluminium body



VSA 1250 II

- 12 x Class D, 50 W amplifiers
- 94 dB SPL Max
- 650 W RMS Power
- 1300 W Peak Power
- 100 ÷ 18000 Hz Freq. Range
- Vertical Coverage Beam from 10° to 30°
- Vertical Steering from 0° to -40°
- 12 x 3.5" neo full range speakers
- Standard installation accessories included
- Extruded aluminium body



The L 2406-T is a full range high intelligibility compact 3 way column speaker array with vertical controlled directivity for medium to large size installations. It is equipped with six 5" woofers and four 1" dome tweeters mounted in front of the two central woofers. This particular design permits coherent sound dispersion minimizing lobing in a very compact enclosure. The two central woofers are controlled differently from the other four because of the tweeters in front of them, in order to improve the directivity providing a true cardioid column operation. The wide coverage horizontal angle and the controlled vertical dispersion allow correct sound reproduction serving a wide area and assistance in limiting feedback and reverberated sound. A speech filter can be activated for enhancing the voice frequencies and improving speech intelligibility.

The crossover is designed to avoid secondary lobing creation. Mounting accessories are provided and are designed to keep the column as close as possible to the wall and simplify the installation allowing suitable tilting. The L 2406-T can be used connected to a low impedance amplifier to handle 200 W RMS power. It also includes a 60 W line transformer for 100 V systems. The crossover is equipped with a circuit to protect the four 1" dome tweeters.



VSA 850 II

- 12 x Class D, 50 W amplifiers
- 93 dB SPL Max
- 650 W RMS Power
- 1300 W Peak Power
- 100 ÷ 18000 Hz Freq. Range
- Vertical Coverage Beam from 10° to 30°
- Vertical Steering from 0° to -40°
- 8 x 3.5" neo full range speakers
- Standard installation accessories included
- Extruded aluminium body



L 2406T

- 126 dB SPL Max
- 200 W RMS Power
- 800 W Peak Power
- Directivity Index Q: 9
- 100 ÷ 20000 Hz Freq. Range
- 150° x 30° coverage angle
- 4 x 1" Dome Tweeter
- 6 x 5" Woofer
- 2000 Hz Crossover Frequencies
- EUROBLOCK connector

HVL SERIES

SOUND SOLUTIONS FOR STADIUMS

The cabinet's design with coplanar woofers and horns produces identical left and right coverage, capable of delivering serious sonic horsepower within the stadium while maintaining intelligibility and even coverage at every seat.

Quality audio coverage in big arenas and stadiums requires long-throw systems with a precise and constant dispersion angle at all frequencies. The HVL SERIES improves upon this concept providing long-throw modular and scalable speakers with maximum reliability and advanced RCF technology.

PRECISION TRANSDUCERS

With in-house transducers' design and manufacturing for no-compromise performances, the HVL Series excels in any comparison. All transducers feature state of the art neodymium magnetic circuits, radically new voice coil ventilation systems, and ground-breaking voice coil assemblies.

LOW FREQUENCIES

2 x 15" high-power woofer, 3,5" inside/outside voice coil, dual spider, hyperventated, neodymium magnet.

MID FREQUENCIES

2 x 10" neodymium midrange, 3" voice coil, high performance sealed basket design.

HIGH FREQUENCIES

2 x 4" neodymium compression driver, titanium dome, 4 slot phase plug, copper inductance ring for extended response.

4PATH WAVEGUIDE

The custom 4 PATH-designed waveguide allows precise coverage while also delivering an excellent, linear high-frequency response. The unique shape of the four ducts forming the guide creates an ideal isophasic load from the vocal range up to the highest audible frequencies.

LONG THROW APPLICATIONS

Focusing on stadiums and big arenas, HVL Series speakers are capable of true, concert-level high performance in arena-sized venues. Featuring point source, line source, and subwoofers speakers, all modules embed RCF Precision Transducers, horns, and waveguides for optimal coverage and clarity. The cabinet's design with coplanar woofers and horns produces identical left and right coverage, capable of delivering serious sonic horsepower within the stadium while maintaining intelligibility and even coverage at every seat.

CONSISTENT ROBUSTNESS

Reduce the commissioning time on your new projects with HVL's modular array-ability, multiple directivity indexes (Q), and small footprint in comparison to its power. HVL can lower overall system costs by delivering full coverage with fewer modules precisely matching the audience area. Rated for direct-exposure outdoor installations, each cabinet is made of Baltic birch plywood with polyurea coating and includes a weatherproof barrier strip for connections. The grille is powder-coated heavy-duty steel with open-cell fibers and water repellent woven-fabric backing.

CUSTOMIZATION WITHOUT BOUNDARIES

Our Engineering Support Group works side by side with the R&D Department to create tailor-made equipment based on the client's real needs – complete with rigging accessories, signal processing, or custom mechanics. We are not only suppliers of standard products but also a team of highly skilled engineers who develop personalized audio solutions. Contact the RCF team to learn more about customization and color options to suit your unique environment. Each project has important benchmarks and we will help you to get the job done.





HVL 15-L

- 1000 W (LF) + 900 W (MHF) power handling
- 147 dB max SPL
- 43 ÷ 18000 Hz frequency range
- 90° x 30° coverage angles
- Fully equipped with neo transducers
- Bi-amped system with passive filter between MF and HF
- Horn Loaded symmetric design
- Baltic birch plywood cabinet and steel grille
- Weatherproof treatment



HVL 15-P

- 1000 W (LF) + 900 W (MF+HF) power handling
- 148 dB max SPL
- 43 ÷ 18000 Hz frequency range
- 45° x 15° coverage angles
- Fully equipped with neo transducers
- Bi-amped system with passive filter between MF and HF
- Horn Loaded symmetric design
- Baltic birch plywood cabinet and steel grille
- Weatherproof treatment



HVL 15-S

- 3000 W power handling
- 133 dB max SPL
- 33 ÷ 180 Hz frequency range
- 2 x 15" high-power woofers
- Symmetric design
- Baltic birch plywood cabinet and steel grille
- Weatherproof treatment



HVL 15-L1

- 1000 W (LF) + 900 W (MHF) power handling
- 147 dB max SPL
- 43 ÷ 18000 Hz frequency range
- 90° x 30° coverage angles
- Fully equipped with neo transducers
- Bi-amped system with passive filter between MF and HF
- Horn Loaded symmetric design
- Baltic birch plywood cabinet and steel grille
- Weatherproof treatment



HVL 15-P1

- 1000 W (LF) + 900 W (MHF) power handling
- 148 dB max SPL
- 43 ÷ 18000 Hz frequency range
- 60° x 30° coverage angles
- Fully equipped with neo transducers
- Bi-amped system with passive filter between MF and HF
- Horn Loaded symmetric design
- Baltic birch plywood cabinet and steel grille
- Weatherproof treatment

HL SERIES

LINE ARRAY MODULES

Horn loaded two-way full range array system designed for mid distance and long throw applications.

The HL Series is a versatile line of passive, horn-loaded, two-way, full-range systems designed for mid-distance applications. Whether for sports venues, medium to large-scale installations, indoors or outdoors, the HL Series provides precision audio coverage with high reliability, delivering the power and clarity of professional sound in a robust, modular design. The system integrates seamlessly across diverse environments, with its advanced horn-loaded construction ensuring optimal directivity and sound pressure.



FLEXIBLE, ROBUST DESIGN

Every cabinet in the HL Series is built to withstand the rigors of both indoor and outdoor permanent installations. Constructed from premium Baltic birch plywood, with heavy-duty steel bracing and powder-coated protective grilles, HL Series speakers offer durability while maintaining superior acoustic performance. Their modular construction allows for flexible array configurations, ensuring easy setup for both suspended and ground-stacked installations. Additionally, the HL Series is optimized for outdoor use with IP-rated connectors, water-resistant enclosures and weatherproof components, ensuring long-term performance in challenging environments.

CONSTANT COVERAGE FOR LARGE VENUES

The HL Series employs specially designed waveguides and transducer configurations to provide constant directivity, ensuring even sound distribution with flexible coverage options. This results in excellent vocal projection and definition, maintaining intelligibility and clarity throughout the venue. The innovative design ensures uniform sound pressure across the entire frequency spectrum, eliminating break-up or attenuation, making it ideal for high-quality music performance.

STATE-OF-THE-ART RCF TRANSDUCERS

Each model in the HL Series features premium RCF-designed transducers optimized for maximum SPL output, extended frequency response, and optimized coverage, ensuring clarity and definition in challenging environments. Whether in compact or larger configurations, the custom-engineered components in each speaker work together to deliver consistent performance across any system.



**HL 2290**

- 1500 W system power handling (RMS)
- 141 dB max SPL
- 90° x 22.5° constant directivity, horn-loaded
- IP 55 protection code
- 2 x 12" high power woofers (3.5" v.c.)
- 1 x 4.0" v.c. compression driver, titanium dome
- Baltic Birch Plywood enclosure with internal structural metal bracings
- Safe and solid variable array mechanics
- Amphenol IP 67 in/out connectors
- Available in black and white

**HL 2260**

- 1500 W system power handling (RMS)
- 141 dB max SPL
- 60° x 22.5° constant directivity, horn-loaded
- IP 55 protection code
- 2 x 12" high power woofers (3.5" v.c.)
- 1 x 4.0" v.c. compression driver, titanium dome
- Baltic Birch Plywood enclosure with internal structural metal bracings
- Safe and solid variable array mechanics
- Amphenol IP 67 in/out connectors
- Available in black and white

**HL 2240**

- 1500 W system power handling (RMS)
- 141 dB max SPL
- 40° x 22.5° constant directivity, horn-loaded
- IP 55 protection code
- 2 x 12" high power woofers (3.5" v.c.)
- 1 x 4.0" v.c. neodymium compression driver
- Baltic Birch Plywood enclosure with internal structural metal bracings
- Safe and solid variable array mechanics
- Amphenol IP 67 in/out connectors
- Available in black and white

**HL 20-WP**

- Very compact size
- Maximum output per size available on the market
- Wide, constant directivity, horizontal coverage angle
- Minimum weight
- Watertight multi-pole connector IP67
- Baltic birch cabinet
- Available in black and white

**HL 35-S**

- 134 dB max SPL
- 40 ÷ 140 Hz frequency range
- x 15" high-power woofer
- Baltic birch plywood cabinet
- Steel front grille with clothing
- M20 standard pole mount in the top section of the cabinet
- 2 x SPEAKON connectors

**HL 6**

- 250 W RMS power handling
- 131 dB max SPL
- 65 ÷ 20000 Hz frequency range
- 100° x 10° coverage angles
- Fully equipped with neodymium transducers
- Horn Loaded symmetric design
- Wooden reinforced polypropylene enclosure
- Steel grille with clothing
- 2 x SPEAKON connectors

Q 15 SERIES

TWO-WAY POINT SOURCE MODULE

Q Series speakers are built upon RCF's premium concert-proven technologies for optimum power-to-size ratio able to cover large areas.

Q 15 is a two-way, bi-amp point source module for mid-distance and long-throw applications, combining a compact size with very high output and accurate speech and music reproduction. Q Series typical applications span from point-source configurations for mid-distance applications to clusters up to 8 modules for long-throw applications.

CONSTANT CURVATURE ADVANTAGE

Delivering extraordinary clarity and power handling, the Q Series modules feature best in class flexibility for multiple applications. Due to its sleek form factor, the speaker is unobtrusive and preferred when space is a constraint. Component positioning of the Q Series and the ability to rotate the cabinet in any position, ensure precise directivity and a detailed sound image, reducing spots of break up or attenuation. RCF developed the Q Series for fixed installations requiring remarkable coverage and coherence in a premium yet discrete look. Despite their dimensions, Q Series speakers are built upon RCF's premium concert-proven technologies for optimum power-to-size ratio able to cover large areas.

USE ANYWHERE ATTITUDE

Q Series speakers can be deployed either horizontally or vertically, with a coverage angle proportionally equal to the sum of the enclosures in the array ($22.5^\circ \times n$). The cabinet features multiple M10 suspension points on both sides. Optional rigging accessories include two fly-bars for horizontal (up to 4) and vertical placement (up to 6 with a single flybar, or 8 with double flybar), stainless steel plates for rigging, and -10 degree spacing to decrease the coverage angle for long-throw applications. All rigging is made of high-strength structural steel with a high safety factor. The compactness and lightweight of the system, combined with top of class suspension system, guarantee a fast and secure hanging procedure.

CONSTANT RELIABILITY

The Q Series speaker is carefully engineered to pack maximum output and superb sound quality with minimum size. The cabinet is made of high-quality water-resistant Baltic birch plywood with internal structural metal bracings, rigid and resonance-free. A special polyurea paint creates a very thick coating of the cabinet, making the speaker highly resistant to scratches, bumps, sun, and extreme weather conditions. The heavy-duty front grille is powder coated. A transparent-to-sound foam backing on the inside of the grille helps to further protect the transducers from dust.





LEGENDARY TRANSDUCERS

The RCF Q Series features state-of-the-art RCF transducers with neodymium magnets. RCF's experienced engineering teams have developed and matched each component. A set of protections preserve product life and reliability.

LOW FREQUENCIES

15" neodymium woofer, 4.0" v.c.
Water-resistant fiber doped cone
Polycotton M-roll surround
Hypervented magnetic structure

HIGH FREQUENCIES

The ND940 Compression Driver in pure Titanium with a 4 inches voice coil works from 600 Hz. This allows a better impulse response, fast decay, translating in perfect vocal clarity and enhanced quality in mid-frequency — leaving the woofer to manage the lower part of the spectrum. Lightweight and powerful, RCF neodymium drivers are a reference in performance and reliability.

The speaker can only be powered by two amplifiers, one for each transducer (4 poles via NL4 connector).



Q 15-P

- 138 dB Max SPL
- 1500 W AES power handling
- 45 ÷ 20000 Hz
- 40° x 22.5° constant directivity coverage
- 1 x 15" neodymium woofer, 4.0" voice coil
- 4" neodymium compression driver
- Baltic birch plywood cabinet
- Steel front grille with clothing
- Integrated array mechanics
- Multi-pole Speakon connectors

Q 15

- 138 dB Max SPL
- 1500 W AES power handling
- 45 ÷ 20000 Hz
- 60° x 22.5° constant directivity coverage
- 1 x 15" neodymium woofer, 4.0" voice coil
- 4" neodymium compression driver
- Baltic birch plywood cabinet
- Steel front grille with clothing
- Integrated array mechanics
- Multi-pole Speakon connectors

Q 15-L

- 138 dB Max SPL
- 1500 W AES power handling
- 45 ÷ 20000 Hz
- 90° x 22.5° constant directivity coverage
- 1 x 15" neodymium woofer, 4.0" voice coil
- 4" neodymium compression driver
- Baltic birch plywood cabinet
- Steel front grille with clothing
- Integrated array mechanics
- Multi-pole Speakon connectors

COMPACT C SERIES

TWO-WAY PROFESSIONAL SPEAKERS

Compact C Series is composed of two-way point source speakers for near and mid-distance applications, combining a compact size with very high output for accurate speech and music reproduction.

Compact C Series is composed of two-way point source speakers for near and mid-distance applications, combining a compact size with very high output for accurate speech and music reproduction. Combining high-quality birch plywood cabinets with neodymium transducers and a 100° x 50° rotatable constant directivity horn.



COMPACT C 45

- 700 W power handling (RMS)
- 138 dB max SPL
- 48 ÷ 20000 Hz frequency range
- 100° x 50° constant directivity coverage angle
- 1 x 15" high power neodymium woofer
- 1 x 4.0" v.c. neodymium compression driver
- Steel front grille with protective foam
- Installation points available on top, bottom, rear, and side panels
- 2 x SPEAKON in/out connectors

COMPACT C 45 WP

- 700 W power handling (RMS)
- 138 dB max SPL
- 48 ÷ 20000 Hz frequency range
- 100° x 50° constant directivity coverage angle
- 1 x 15" high power neodymium woofer
- 1 x 4.0" v.c. neodymium compression driver
- Steel front grille with protective foam
- Installation points available on top, bottom, rear, and side panels
- 2 x SPEAKON in/out connectors
- Steel front grille with protective foam and waterproof protection

MULTIPURPOSE SOUND

Elegant design aesthetics and RCF signature sound quality that delivers a supreme audio experience in any application, from sports halls to clubs, corporate spaces, and live venues. Available in three sizes - starting from 12-inch to 15-inch woofers with excellent acoustic performance for both background and foreground music.

CONSTANT DIRECTIVITY WAVEGUIDE

The special waveguide design allows the deployment of COMPACT C speakers with accurate control of the directional characteristics. In difficult acoustic environments, intelligibility is significantly increased. Using the optional HN-KIT COMPACT C 32 C 45 accessory, it is possible to replace the speaker horn with two different horns and change directivity to 100° x 25° or 60° x 25°.



COMPACT C 32

- 600 W power handling (RMS)
- 137 dB max SPL
- 54 ÷ 20000 Hz frequency range
- 100° x 50° constant directivity coverage angle
- 1 x 12" high power neodymium woofer
- 1 x 3.0" v.c. neodymium compression driver
- Steel front grille with protective foam
- Installation points available on top, bottom, rear, and side panels
- 2 x SPEAKON in/out connectors



The C3110 is a full range extremely versatile wide-dispersion, low profile, two-way loudspeaker system for near field applications. Its compact size makes it ideal for low visibility side wall mounting. The high-frequency section is a constant directivity horn loaded to a 1" compression driver with a 1.5" diaphragm assembly for smooth, wide dispersion. The low-frequency transducer is a 10" woofer with a 2" voice coil.



C 3110-126

- 128 dB SPL Max
- 2000 W Peak Power
- 67 ÷ 20000 Hz Frequency Range
- 120° x 60° CMD constant directivity horn
- 1.5" C. Driver
- 10" Woofer
- Crossover 2 kHz
- LICC (Low Impedance Compensated Crossover) network
- 10 Suspension points
- 1 top pole mount, 1 bottom pole mount

C 3110-96

- 128 dB SPL Max
- 2000 W Peak Power
- 67 ÷ 20000 Hz Frequency Range
- 90° x 60° CMD constant directivity horn
- 1.5" C. Driver
- 10" Woofer
- Crossover 2 kHz
- LICC (Low Impedance Compensated Crossover) network
- 10 Suspension points
- 1 top pole mount, 1 bottom pole mount

The C3108-126 is a full range extremely versatile wide-dispersion, low profile, two-way loudspeaker system for near field applications. Its compact size makes it ideal for low visibility side wall mounting. The high-frequency section is a constant directivity horn loaded to a 1" compression driver with a 1.5" diaphragm assembly for smooth, wide dispersion. The low-frequency transducer is an 8" woofer with a 2" voice coil.



C 3108-126

- 128 dB SPL Max
- 2000 W Peak Power
- 70 ÷ 20000 Hz Frequency Range
- 120° x 60° CMD constant directivity horn
- 1.5" C. Driver
- 8" Woofer
- Crossover 2 kHz
- LICC (Low Impedance Compensated Crossover) network
- 10 Suspension points
- 1 top pole mount, 1 bottom pole mount

C 3108-96

- 128 dB SPL Max
- 2000 W Peak Power
- 70 ÷ 20000 Hz Frequency Range
- 90° x 60° CMD constant directivity horn
- 1.5" C. Driver
- 8" Woofer
- Crossover 2 kHz
- LICC (Low Impedance Compensated Crossover) network
- 10 Suspension points
- 1 top pole mount, 1 bottom pole mount

COMPACT M SERIES

MULTIPURPOSE TWO-WAY FULL-RANGE SPEAKER SYSTEM

Suitable for a wide range of applications. Its sound quality and compactness combine with an elegant design and accurate finishing to make the COMPACT M series the perfect choice for any environment.

Engage your audience with this multipurpose two-way passive speaker series, ideal for a wide range of installed applications. The sound quality and the neutral design make COMPACT M series suited to every environment, providing excellent acoustic performance for both background and foreground music. With a complete range of solid wood cabinets, multiple rigging points and accessories, installation time is minimal.

IMPROVE THE AUDIO ATMOSPHERE

Music supports engagement and improves the feeling of hospitality in the environment, especially if the perceived sound quality is higher. RCF's Compact M Series is designed specifically for optimal performance in both background music and high-powered foreground audio.

ENGAGE YOUR CUSTOMERS

Compact dimensions and an impressive ratio of size/weight to SPL output: Let your audience enjoy an immersive musical experience.

WIDE COVERAGE, ELEGANT DESIGN

Smooth and wide frequency response with constant coverage, thanks to the CMD wave-guided compression driver.

SMOOTH INSTALLATION

COMPACT M speakers embody the functionality and style you expect of Italian design, always in harmony with the installation environment. Available in a wide range of models for all sizes and power levels, the Compact M series gives you the optimal combination to match with any coverage need. Moreover, the rotatable horn and RCF logo allow both vertical and horizontal speaker installation.

All models are built of high-quality wood, with multiple rigging points for a convenient flying/hanging installation. Thanks to the range of accessories, installation time is minimal. If needed, the EUROBLOCK connection panel can be replaced with a female Neutrik SpeakON one.

THE TRANSDUCERS INNOVATORS

High sensitivity and Hi-Fi sound quality with meticulously selected components.

OPTIMAL SOUND PERFORMANCE

The available SPL level and low distortion characteristics go way beyond what is usually expected of a compact solution.



COMPACT M 12

- 129 dB SPL Max
- 300 W RMS Power
- 1200 W Peak Power
- Directivity Index Q: 9
- 55 ÷ 20000 Hz Freq. Range
- 90° x 70° coverage angle
- 1.4" C. Driver
- 12" Woofer
- 1800 Hz Crossover Frequencies
- 4 pole EUROBLOCK connector



COMPACT M 10

- 128 dB SPL Max
- 300 W RMS Power
- 1200 W Peak Power
- Directivity Index Q: 9
- 60 ÷ 20000 Hz Freq. Range
- 90° x 70° coverage angle
- 1.4" C. Driver
- 10" Woofer
- 1800 Hz Crossover Frequencies
- 4 pole EUROBLOCK connector



COMPACT M 08

- 128 dB SPL Max
- 200 W RMS Power
- 800 W Peak Power
- Directivity Index Q: 9
- 60 ÷ 20000 Hz Freq. Range
- 90° x 70° coverage angle
- 1.4" C. Driver
- 8" Woofer
- 1800 Hz Crossover Frequencies
- 4 pole EUROBLOCK connector



COMPACT M 06

- 116 dB SPL Max
- 100 W RMS Power
- 400 W Peak Power
- Directivity Index Q: 7
- 60 ÷ 20000 Hz Freq. Range
- 120° x 80° coverage angle
- 1.3" Neo Dome Tweeter
- 6" Woofer
- 2200 Hz Crossover Frequencies
- 4 pole EUROBLOCK connector



COMPACT M 05

- 115 dB SPL Max
- 80 W RMS Power
- 320 W Peak Power
- Directivity Index Q: 7
- 70 ÷ 20000 Hz Freq. Range
- 120° x 80° coverage angle
- 1.3" Neo Dome Tweeter
- 5" Woofer
- 2200 Hz Crossover Frequencies
- 4 pole EUROBLOCK connector



COMPACT M 04

- 110 dB SPL Max
- 60 W RMS Power
- 240 W Peak Power
- Directivity Index Q: 6
- 90 ÷ 20000 Hz Freq. Range
- 120° x 120° coverage angle
- 1" Neo Dome Tweeter
- 4" Woofer
- 3000 Hz Crossover Frequencies
- 4 pole EUROBLOCK connector

COMPACT A SERIES

TWO-WAY PROFESSIONAL SPEAKERS

Elegant design aesthetics and RCF signature sound quality that delivers a supreme audio experience in any application, from restaurants and retail shops to clubs, corporate spaces and venues.

COMPACT A Series is a multipurpose two-way full-range professional speaker system, suitable for a wide range of applications, such as live sound reinforcement and stage monitoring as well as distributed sound systems for clubs or music venues. The combination of a 1.75" compression driver, from 15" to 10" woofer", and the constant directivity True Resistive Waveguide produces coherent 100° x 60° coverage for the listening area with high SPL, distortion-free sound. The sleek and lightweight cabinet uses a special polypropylene composite material with an M-brace internal reinforcement, making it easy to carry and secure to install on a pole, flown-, wall-, or truss-mounted using the multiple rigging points and available accessories

EASY TO HANDLE, FAST TO INSTALL

COMPACT A is flexible and makes it a smart choice for a wide range of applications. The cabinet is easy to carry, thanks to ergonomic handles on both sides and the top. The lower side includes a steel pole socket for mounting on a stand or subwoofer pole. Each model can also be flown, wall- or truss-mounted using multiple M10 rigging points and special accessories. From molding to the final texture, COMPACT A offers maximum strength for fixed installation.



COMPACT A 15

- 450 W power handling
- Up to 130 dB Sound Pressure Level
- 50-20 kHz linear frequency response
- 1.75" Compression Driver
- 15" High Power Woofer
- Robust composite material cabinet
- Steel full front grille
- Optional mounting accessories
- 2 x SPEAKON connectors



COMPACT A 12

- 400 W power handling
- Up to 129 dB Sound Pressure Level
- 55-20 kHz linear frequency response
- 1.75" Compression Driver
- 12" High Power Woofer
- Robust composite material cabinet
- Steel full front grille
- Optional mounting accessories
- 2 x SPEAKON connectors



COMPACT A 10

- 350 W power handling
- Up to 128 dB Sound Pressure Level
- 60-20 kHz linear frequency response
- 1.75" Compression Driver
- 10" High Power Woofer
- Robust composite material cabinet
- Steel full front grille
- Optional mounting accessories
- 2 x SPEAKON connectors



NEW PARADIGMS IN ELECTROACOUSTICS

The advanced design of COMPACT A lies within the housing of the speaker. The new True Resistive Waveguide is the result of several refinements in both the transducers' and the vented ports' design with Finite Element Analysis, and constant measurement in RCF anechoic chambers. Thanks to our transducers, the new shape, and the placement of the ports, the speaker now acts as a single ideal source for a perfect sound image. Acoustically, the TRW waveguide mimics a resonance-free pure resistive load reducing the high-frequency distortion of a classic horn. With its asymmetrical sound shaping, the coverage angle of the waveguide provides constant directivity to the entire listening area and improved stereo panorama.

M-BRACING A NEW CABINET DESIGN

COMPACT A professional appearance of an is ideal for live events or installed applications. The sleek cabinet uses a special polypropylene composite material with a radically new construction concept. The grille cover is heavy-duty steel protecting both transducers and vented ports. The purpose-designed M-brace connects the four internal sides of the cabinet and amplifier, preventing any deformation for a completely inert body, with augmented acoustical damping even at maximum volume settings. It also performs as a reinforcement structure, for greater resistance to mechanical stress.



MULTIPURPOSE SOUND

Elegant design aesthetics and RCF signature sound quality that delivers a supreme audio experience in any application, from restaurants and retail shops to clubs, corporate spaces and venues. Available in three sizes - starting from 10-inch to 15-inch woofers with excellent acoustic performance for both background and foreground music.

SUPERIOR TRANSDUCERS

Lightweight and powerful, RCF drivers are a true reference for high performance. All transducers are designed by RCF engineers in Italy for maximum reliability and perfectly matched components. The internal crossover frequency is set at a lower frequency than usual, resulting in a clear and accurate vocal reproduction with Dynamic Active Mosfet protection.

HIGH FREQUENCIES

The new 1.75" compression driver voice-coil design with Polyimide-Kapton dome features a new bonding technology and reinforced ribs making it 10 times more durable than previous designs. The redesigned phase plug increases sound clarity, enhancing transient response and improving coupling with the low-frequency transducer.

LOW FREQUENCIES

Low-frequency transducer design gains more stability over higher currents, with less distortion, and is highly efficient in terms of heat dissipation. RCF quality control is very strict. Our woofers are tested with a 200 hours continuous signal to stress the transducer at extreme levels.

MAX SERIES

FULL-RANGE TWO-WAY SPEAKERS

The MAX series has been designed as a multi-purpose speaker, to achieve the best nearfield quality, vocal coherence, and a stable tonal balance even at full volume.

The full-range passive two-way RCF MAX series has been designed as a multi-purpose speaker, to achieve the best nearfield quality, vocal coherence, and a stable tonal balance even at full volume.

PERFECTLY TUNED CROSSOVER

The MAX Series features a custom-designed mid-freq shaping for close distance listening on a perfectly tuned crossover to ensure the best frequency and phase response. The LICC crossover design includes electronic protection on high-frequency device.

EASY RIGGING

The base of each speaker includes a robust steel pole socket for mounting on a stand or a subwoofer pole. Threaded inserts are provided on all sides for optional mounting hardware. Included are multiple rigging points to fly the speakers for maximum architectural freedom in any installation.

DESIGNED TO PERFORM

The RCF MAX series and its components are designed inside RCF's laboratories and feature superior transducers. Equipped with a rotatable horn with 90° x 70° dispersion pattern.

CABINET & MECHANICS

All Max Series cabinets are built in heavy-duty birch plywood coated with black textured epoxy. A sturdy black metal grille protects the front, and an acoustically transparent sound foam backing on the inside of the grille ensures protection from dust and humidity. The base of each speaker includes a robust steel pole socket for mounting on a stand or a subwoofer pole. Included are rigging points to fly the speakers for maximum architectural freedom on any installation. Threaded inserts are provided for optional mounting hardware in Installed Sound Applications.

ROBUST WORKHORSE

All MAX Series cabinets are built-in plywood coated with black textured acrylic paint. A sturdy powder-coated metal grille protects the front, and an acoustically transparent sound foam backing on the inside of the grille ensures protection from dust and humidity.



X-MAX 12

- 129 dB SPL Max
- 400 W RMS Power
- 1600 W Peak Power
- Directivity Index Q: 9
- 60 ÷ 20000 Hz Freq. Range
- 90° x 70° coverage angle
- 1.4" C. Driver
- 12" Woofer



X-MAX 10

- 128 dB SPL Max
- 350 W RMS Power
- 1400 W Peak Power
- Directivity Index Q: 11
- 65 ÷ 20000 Hz Freq. Range
- 90° x 70° coverage angle
- 1.4" C. Driver
- 10" Woofer



C-MAX 4112

- 130 dB SPL Max
- 400 W RMS Power
- 1600 W Peak Power
- Directivity Index Q: 11
- 60 ÷ 20000 Hz Freq. Range
- 90° x 70° coverage angle
- 1.75" Neo C. Driver
- 12" Woofer



C-MAX 4110

- 128 dB SPL Max
- 350 W RMS Power
- 1400 W Peak Power
- Directivity Index Q: 11
- 65 ÷ 20000 Hz Freq. Range
- 90° x 70° coverage angle
- 1.75" Neo C. Driver
- 10" Woofer



E-MAX 3112 MKII

- 129 dB SPL Max
- 350 W RMS Power
- 1400 W Peak Power
- Directivity Index Q: 11
- 55 ÷ 20000 Hz Freq. Range
- 90° x 70° coverage angle
- 1.5" Neo C. Driver
- 12" Woofer



E-MAX 3110 MKII

- 128 dB SPL Max
- 300 W RMS Power
- 1200 W Peak Power
- Directivity Index Q: 11
- 60 ÷ 20000 Hz Freq. Range
- 90° x 70° coverage angle
- 1.5" Neo C. Driver
- 10" Woofer

P SERIES

COAXIAL SPEAKERS IN ROTO-MOLDED PLASTIC RESIN

Highly efficient coaxial designs offering excellent music and speech intelligibility in a compact, lightweight, and weatherproof enclosure.

The RCF P Series are highly efficient two-way designs offering excellent music and speech intelligibility in compact lightweight weatherproof design cabinets constructed with a heavy-duty roto-molded plastic resin UV-stabilized material. P Series speaker systems offer environmental protection up to the highest IP standard rating. The design aesthetics of the P Series is suitable for outdoor applications as well as indoor installations in tough environments. The front grille construction and included bracket are made of aluminum and stainless steel in all models.

VERSATILITY FOR ANY APPLICATION

Focusing on outdoor and indoor large spaces, P Series speakers are capable of true, concert-level high performance in a compact enclosure, installed individually or coupled in array configurations. Featuring coaxial, line source, and subwoofers speakers, all modules embed RCF Precision transducers, horns, and waveguides for optimal coverage and clarity. The cabinet's design with coaxial or coplanar transducers and horns produces identical left and right coverage, capable of delivering serious sonic horsepower within the stadium while maintaining intelligibility and even coverage at every seat.

CUSTOMIZATION WITHOUT BOUNDARIES

Our Engineering Support Group works side by side with the R&D Department to create tailor-made equipment based on the client's real needs – complete with rigging accessories, signal processing, or custom mechanics. We are not only suppliers of standard products but also a team of highly skilled engineers who develop personalized audio solutions. Contact the RCF team to learn more about customization and color options to suit your unique environment. Each project has important benchmarks and we will help you to get the job done.



P 3115T

- 129 dB SPL Max
- 300 W RMS Power
- 1200 W Peak Power
- Directivity Index Q: 13
- 75 ÷ 20000 Hz Freq. Range
- 90° x 60° coverage angle
- 1.5" C. Driver
- 15" Coaxial Woofer
- IP 55 Protection Grade



P 2110T

- 124 dB SPL Max
- 200 W RMS Power
- 800 W Peak Power
- Directivity Index Q: 11
- 95 ÷ 20000 Hz Freq. Range
- 90° x 40° coverage angle
- 1.5" C. Driver
- 10" Coaxial Woofer
- IP 55 Protection Grade





ALL-WEATHER PERFORMANCE

The single-piece rotomolded cabinet is fully UV protected, equipped with multiple brass inserts and a corrosion-resistant 316P stainless steel U-bracket. Connections to the amplifier are made through a watertight multi-pole connector. The front aluminum grille is powder coated with water-repellent backing material, front logo is rotatable. All P series speakers meet IP55 standard requirements (International Protection Rating), suitable for indoor and outdoor applications.

CMD - COVERAGE MATCHING DESIGN

RCF exclusive CMD technology helps guarantee an optimal transition between the high frequency horn polar pattern and the low frequency woofer directivity. The horn can be rotated, allowing to install the loudspeaker either vertically or horizontally.



P 8015S

- 132 dB SPL Max
- 800 W RMS Power
- 3200 W Peak Power
- 50 ÷ 200 Hz Freq. Range
- 15" neo Woofer
- IP 55 Protection Grade



P 3108

- 129 dB SPL Max
- 300 W RMS Power
- 1200 W Peak Power
- Directivity Index Q: 11
- 80 ÷ 20000 Hz Freq. Range
- 90° x 60° coverage angle
- 2.5" C. Driver
- 8" Woofers
- IP 55 Protection Grade



P 1108T

- 121 dB SPL Max
- 100 W RMS Power
- 400 W Peak Power
- Directivity Index Q: 11
- 80 ÷ 20000 Hz Freq. Range
- 90° x 60° coverage angle
- 1.5" C. Driver
- 8" Woofers
- IP 55 Protection Grade



P 6215

- 134 dB SPL Max
- 600 W RMS Power
- 2400 W Peak Power
- Directivity Index Q: 13
- 75 ÷ 20000 Hz Freq. Range
- 60° x 60° coverage angle
- 2.5" C. Driver
- 15" Coaxial neo Woofer
- IP 55 Protection Grade



P 5228-L

- 131 dB SPL Max
- 500 W RMS Power
- 2000 W Peak Power
- Directivity Index Q: 11
- 80 ÷ 20000 Hz Freq. Range
- 90° x 20° coverage angle
- 1.75" C. Driver
- 2 x 8" neo Woofers
- IP 55 Protection Grade



P 4228

- 129 dB SPL Max
- 400 W RMS Power
- 1600 W Peak Power
- Directivity Index Q: 9
- 80 ÷ 20000 Hz Freq. Range
- 110° x 60° coverage angle
- 2.5" C. Driver
- 2 x 8" Woofers
- IP 55 Protection Grade

SUB SERIES

BASS REFLEX AND BANDPASS SUBWOOFERS

Highly efficient design, various configurations, particularly well-suited matching subwoofer in high-quality sound systems for clubs, bars and cafes, theatres, multimedia, and corporate A/V applications.

RCF subwoofers are the first choice of many sound engineers, due to their very high SPL levels at very low frequencies, smaller dimensions compared to the competitors, and impressive size/weight to SPL output ratio. Your audience will enjoy an engaging immersive musical experience.

IMPROVE THE AUDIO ATMOSPHERE

Music helps engagement and will improve the hospitality of your activity, especially if the perceived sound quality is higher. This is the aim of RCF SUB S Series - optimal performance in both background music and high-powered foreground audio.

MULTIPURPOSE SOUND

Elegant design aesthetic, multiple formats and RCF signature sound quality that allows to deliver a supreme audio experience in any application, from restaurant and retail shops to clubs, corporate spaces and venues.



S 8015LP

- 15" high-efficiency RCF Precision 4" voice-coil woofer with Inside/Outside Coil Technology
- Bandpass woofer
- 135 dB Max SPL
- Response down to 43 Hz
- Rectangular box enclosure
- Baltic Birch cabinet finished in a very resistant, textured black paint with rubber feet



S 8028 II

- 2 x 18" high-efficiency 4.0" voice-coil woofer with Inside/Outside Coil Technology
- 141 dB maximum sound pressure level
- Response down to 30 Hz
- System Power rating 3000 Watt RMS
- M20 standard pole mount in top section of cabinet
- Baltic Birch cabinet painted with black, heavy duty, textured epoxy
- Recessed Speakon NL4 Input/Output
- Protective metal grille, polyester fabric coated



S 8018 II

- 18" high-efficiency 4" voice-coil woofer with Inside/Outside Coil Technology
- 137 dB maximum sound pressure level
- Response down to 30 Hz
- Rectangular box enclosure with protective metal grille
- 35 mm standard pole mount in top section of cabinet
- Baltic Birch cabinet painted with black, heavy duty, textured epoxy
- Integrated hand carry points

**S 8015 II**

- 15" high-efficiency RCF Precision 4" voice-coil woofer with Inside/Outside Coil Technology
- 133 dB maximum sound pressure level
- Response down to 35 Hz
- Rectangular box enclosure with protective metal grille
- 35 mm standard pole mount in top section of cabinet
- Baltic Birch cabinet painted with black, heavy duty, textured epoxy
- Integrated hand carry points

**S 29**

- Up to 3000 W power handling
- 143 dB max SPL
- 25 ÷ 200 Hz frequency range
- 2x19" HyperVented Neodymium Woofer with 4" v.c.
- High-quality polyurea-coated multiply cabinet
- Steel front grille with clothing
- M20 standard pole mount in top section of cabinet
- Speakon NL4 connectors

**S 19**

- Up to 1500 W power handling
- 139 dB max SPL
- 30 ÷ 200 Hz frequency range
- 19" HyperVented Neodymium Woofer with 4" v.c.
- High-quality polyurea-coated multiply cabinet
- Steel front grille with clothing
- M20 standard pole mount in top end of cabinet
- Speakon NL4 connectors

**S 15**

- 500W AES power handling
- 126 dB max SPL
- 35 ÷ 200 Hz frequency range
- 1 x 15" high-power woofer
- High-quality plywood cabinet
- Steel front grille with clothing
- M20 standard pole mount in the top section of the cabinet
- 4 pole EUROBLOCK connector (audio input and parallel link output)

**S 12**

- 400 W RMS power handling
- 125 dB max SPL
- 40 ÷ 200 Hz frequency range
- 1 x 12" high power woofer
- High quality plywood cabinet
- Steel front grille with clothing
- M20 standard pole mount in top section of cabinet
- 4 pole EUROBLOCK connector (audio input and parallel link output)

**S 10**

- 400 W RMS power handling
- 124 dB max SPL
- 50 ÷ 200 Hz frequency range
- 1 x 10" high power woofer
- High quality plywood cabinet
- Steel front grille with clothing
- M20 standard pole mount in top section of cabinet
- 4 pole EUROBLOCK connector (audio input and parallel link output)

MONITOR SERIES

TWO-WAY SPEAKERS

Bass-reflex two-way speaker designed to deliver uncompromised audio performance and high reliability in fixed installations.

The MR series is designed to deliver uncompromising audio performance and reliability in fixed installations, featuring high-quality components and careful acoustic design. MR speakers blend in with any environment and deliver deep bass, smooth midrange, and finely-detailed high-frequency response

VERSATILE SOUND

Elegant and discreet design, combined with an excellent audio performance, represent the RCF sound. MR speakers are ideal both for speech and music reproduction in any business and A/V application and deliver deep bass, smooth midrange, and finely-detailed high-frequency response.



WMR 60T

- 80W RMS power handling
- 114 dB max SPL
- 70 ÷ 20000 Hz frequency range
- 140° x 100° constant directivity coverage angle
- 6.5" high power woofer
- 1" neodymium dome tweeter
- Connection board integrated into the wall support
- 4 pole EUROBLOCK connector
- 5 different power levels selectable



WMR 50T

- 40W RMS power handling
- 110 dB max SPL
- 80 ÷ 20000 Hz frequency range
- 140° x 100° constant directivity coverage angle
- 5" high power woofer
- 1" neodymium dome tweeter
- Connection board integrated into the wall support
- 4 pole EUROBLOCK connector
- 5 different power levels selectable



CMR 60T

- 80W RMS power handling
- 114 dB max SPL
- 70 ÷ 20000 Hz frequency range
- 130° constant directivity conical coverage angle
- 6.5" high power woofer
- 1" neodymium dome tweeter
- Connection board integrated into the wall support
- 4 pole EUROBLOCK connector
- 5 different power levels selectable



CMR 50T

- 40W RMS power handling
- 110 dB max SPL
- 80 ÷ 20000 Hz frequency range
- 130° constant directivity conical coverage angle
- 5" high power woofer
- 1" neodymium dome tweeter
- Connection board integrated into the wall support
- 4 pole EUROBLOCK connector
- 5 different power levels selectable



CONSTANT VOLTAGE SPEAKERS (T VERSION)

Constant-voltage speaker systems, also called high impedance or 70V/100V audio distribution systems, refer to networks of loudspeakers equipped with line transformers connected to an audio amplifier with high impedance output. This approach offers several advantages such as:

- High voltage (70V or 100V) enables long cable runs between amp and speakers with reduced power loss: low level current allows smaller cable diameters
- Speakers can be wired in parallel in large number, limited only by available amplifier power
- Different speaker types with different power requirements can share the same speaker line simultaneously making the system-wiring easy
- Adding or removing a speaker is very quick and simple, it does not require to re-wire the overall circuit



MR 50 - MR 50T

- 110 dB SPL Max
- 240 W Peak S Power
- 1 x 1" dome tweeter (0.8" v.c.) neodymium magnet
- 5" Woofer
- 60 ÷ 20000 Hz Freq. Range
- 3000 Crossover Freq.
- 110° x 100° coverage angle
- Swivel wall mount accessory included
- 4 pole EUROBLOCK connector

SMOOTH INSTALLATION

Housed in self-extinguishing plastic, the MR series delivers uncompromising audio performance and reliability in fixed installations where the speakers would blend into any environment. MR speakers are easy to install, with included and optional accessories to increase installation flexibility for wall mounting.



PMR 60T

- 108 dB SPL Max
- 160 W Peak S Power
- 1 x 1" dome tweeter (0.8" v.c.) neodymium magnet
- 4" Woofer
- 70 ÷ 20000 Hz Freq. Range
- 3000 Crossover Freq.
- 110° x 100° coverage angle
- Swivel wall mount accessory included
- 4 pole EUROBLOCK connector



MR 40 - MR 40T

- 108 dB SPL Max
- 160 W Peak S Power
- 1 x 1" dome tweeter (0.8" v.c.) neodymium magnet
- 4" Woofer
- 70 ÷ 20000 Hz Freq. Range
- 3000 Crossover Freq.
- 110° x 100° coverage angle
- Swivel wall mount accessory included
- 4 pole EUROBLOCK connector

DMA SERIES AMPLIFIERS

DIGITAL MATRIX AMPLIFIERS

Compact Class-D amplifiers equipped with a powerful DSP platform and remote control, ideal for a wide range of install applications.

DMA SERIES is a Class-D matrix amplifiers equipped with a powerful DSP platform, allowing managing inputs and outputs in terms of routing and equalization. A complete set of processing functions is available, including presets for RCF speakers, proprietary bass enhancer algorithm, FIR filters, and environmental equalization. Thanks to its installation flexibility, accurate design, and robustness, it is ideal for a wide range of business music and installed sound applications.

SPEAKERS PRESETS

Processing functions are combined in a highly distinctive feature, **SPEAKERS PRESETS**, pre-loaded equalization packages optimizing the performance of any RCF speaker. Just select the speakers connected to the amplifier to automatically get the right RCF signature sound.



FOUR CHANNEL MATRIX AMPLIFIER

DMA 504

- 4 x 500 W Class-D power amplifier
- 20 ÷ 20000 Hz frequency range
- Full on-board processing
- Proprietary bass enhancer algorithm
- FIRPHASE linear phase filters
- Optional 4 in / 4 out DANTE board
- RDNNet ready for networked management
- Remote controls and paging console accessories

EASY AND FLEXIBLE CONFIGURATION

The configuration is a key point for the success of sound reinforcement systems: it's easy and flexible for any kind of user, from the less to the more skilled one. DMA amplifiers offer different configuration levels, from user-friendly front panel control interface to RDNNet, for large and complex systems.

SCALABLE ARCHITECTURE

To fit with any installation need, DMA amplifiers have been designed with a highly scalable architecture and each device can distribute 4 audio channels to satellite units. This allows increasing installed power and creating a multi-room architecture. The connection can be done with just 1 CAT5e cable. Each satellite unit can be differently set using the DIP-SWITCH on the rear panel to receive the desired channels.



DMA 82 - DMA 162 - DMA 162P

- Class-D power amplifier
- 2 X 80W Two Channel Matrix Amplifier (DMA 82)
- 2 X 160W Two Channel Matrix Amplifier (DMA 162)
- 2 X 160W Two Channel Power Amplifier (DMA 162P)
- 20 ÷ 20000 Hz frequency range
- Full on-board processing
- FIRPHASE linear phase filters
- Proprietary bass enhancer algorithm
- RDNNet ready
- Suitable for desktop or rack installation (optional accessory required)
- MUTE command for the connection to Voice Alarm Systems



INDEX

PART NUMBER

DMA ACCESSORIES



RC 401 is a wall mount remote that works in combination with DMA units.



The **BT BOARD** is an additional board that allows to connect a DMA amplifier to a mobile device using Bluetooth 5.0 technology.



TRF-KIT DMA 162

LINE TRANSFORMERS KIT FOR DMA 162

- Low to high impedance output lines
- Compatible with RM-KIT DMA accessory
- Metal case black RAL 9005

RM-KIT DMA - RACK MOUNT KIT

It is an accessory allows to install one or two DMA amplifier units inside standard 19" rack cabinets.

For DMA 82, DMA 162 and DMA 162P only.



The DMA Connect app for Android and iOS provides wireless control of RCF DMA Series Business Music amplifiers. Thanks to its accurate and user-friendly interface, it gives access to DMA settings.



The RCF OPTIONAL **RDNNet BOARD** is the perfect tool to configure and manage DMA units setup in any venues.



BM 404 is a desktop paging console that allows making selective calls to 4 zones.

- Shock-resistant polymeric body
- High-quality electret microphone
- Up to 4 consoles to each amplifier
- 16ft / 5m connection cable included
- External power supply included

XPS AMPLIFIERS SERIES

FOUR CHANNELS DSP AMPLIFIER

Outstanding RCF amplification and DSP technology packed into a convenient 2U four-channel power amp for mobile touring and install applications.

MODULAR POWER MANAGEMENT

XPS 16K provides extreme power density with 4 x 4000 W continuous power outputs in 2 RU space for both touring and installed sound systems. The unit features 4 analog and digital AES/EBU inputs/outputs, Dante Network (KD model), and a complete signal processing, tuning, and routing capability at 96 kHz. Redundancy and full scalability are granted by the advanced and modular design of the circuitry. A complete set of RCF speaker presets is available, with powerful signal processing for a complete system's tuning.

More than a power amplifier. XPS 16K supports the RCF philosophy with a power-agnostic approach, where the Sound System Manager has complete freedom in choosing a powered or externally amplified modules for its system. XPS 16K offers balancing portability, weight, ease of installation, cabling, fast setup speed, and complete remote management of each connected device, via RDNNet.

RCF's effort in assisting both installers and sound providers with the best audio technology and clear, powerful sound is at the core of the company's beliefs. Since 1949, providing both power amplifiers and transducers to the professional market, the RCF experience marks a new milestone with XPS 16K.

TOTAL OPERATIONAL CONTROL

A large 4.3" TFT color capacitive touch panel provides full operational control of the amplifier. The user interface is clear and easy to use providing large touch buttons and a practical edit knob, with high contrast menus designed to avoid any ambiguity in very bright or sunny environments. Proprietary RDNNet Over Ethernet Management Network and OSC protocol compatibility allow the Sound System Manager to have complete remote control of the amplifier.



XPS 16K

- 16000 W Total Continuous Power
- 40-bit Floating-point Processing, up to 96 kHz
- 32-bit Fixed-point Internal Routing
- FIRPHASE, Bass Motion Control, Bass Shaper
- RDNNet Networked Management
- Touch 4.3" Color TFT Interface
- Full On-board Processing with Delay, EQ, Comp/Limiter
- On-board Speaker Presets Library



XPS 16KD

- 16000 W Total Continuous Power
- 40-bit Floating-point DSP and 32-bit routing up to 96 kHz
- Dante Audio Network
- FIRPHASE, Bass Motion Control, Bass Shaper
- RDNNet Networked Management
- Touch 4.3" Color TFT Interface
- Full On-board Processing with Delay, EQ, Comp/Limiter
- On-board Speaker Presets Library
- Class-D Modules with SMPS and Advanced PFC



POWER-AGNOSTIC RDNET MANAGEMENT

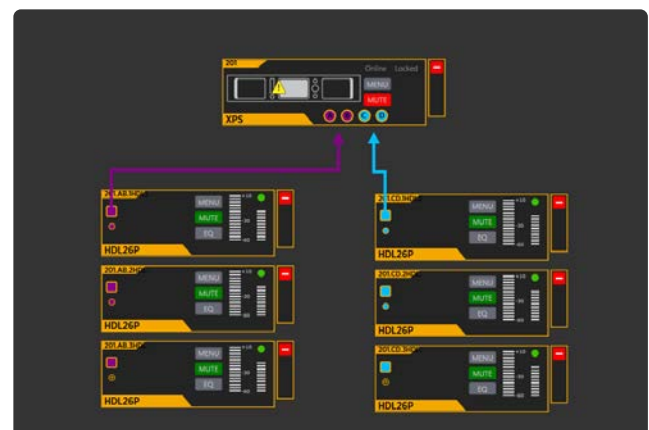
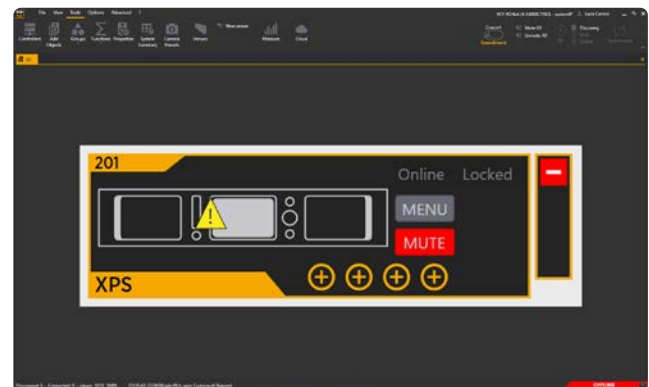
RDNet will manage XPS amplifiers as middlemen between the user and the speaker, so the speaker will always be at the center of the scene, maintaining the usual control paradigm of RDNet software. The extensive RCF loudspeaker preset database is available within the amplifier and recallable via RDNet. The software Synoptic Table will show both passive devices and active ones as fully featured speakers, while the amplifier will be seen as a simple controller for signal routing and maintenance controls. The user can also group speakers and manage advanced settings in a mixed fashion making no distinction between active or passive architecture.

FLEXIBLE SIGNAL PROCESSING

The comprehensive digital architecture of the amplifier features multiple inputs and outputs that can be easily routed to suit any project. Analog inputs 3 and 4 can be switched to 4 AES/EBU digital I/O ports. Each input can be routed to any of the four digital and power outputs. The advanced clocking management design provides low latency sample rate conversion with high-quality AD/DA converters up to 96 kHz. Each XPS 16K amplifier combines two 40-bit floating-point SHARC DSP chips at 96 kHz and two more 32-bit DSP chips to independently manage audio processing and signal routing for maximum sound quality and redundancy.

FAULT-TOLERANT ARCHITECTURE

RCF amplifier blocks are fully self-protecting and designed on an 'audio-at-all-times' principle, with all fault protection features individually implemented for each amplifier channel and power supply. XPS 16K implements several safety strategies with fast and slow protections at both firmware and hardware levels. Scalability and Resilience concepts are interpenetrated in the so-called RDNet-OE converged network, which transports audio and control in a simple and safe way, with priority management.



SCALABILITY

XPS is a scalable system: system expansion only requires standard ethernet equipment. RDNet will detect any new devices on the network, take immediate control, and provide monitoring from a remote computer.

CONVERGENCE

XPS is a converged system: multiple interconnected devices don't need overabundant infrastructures. Dante and control networks converge to the same connector, simplifying cabling and reducing malfunction occurrences.

PROFESSIONAL AMPLIFIERS

SOLUTIONS FOR PASSIVE SPEAKERS

High-current and extended dynamic power amplifiers, suitable for demanding installed applications from small spaces to large arenas.

QPS SERIES

QPS Power Amplifiers boast 4 channel high-efficiency electronics delivering up to 4 x 1500 W continuous power @ 2 ohm. Both devices feature independent gain control, signal / clip and faults indicators, channels A and C XLR output link, mono and bridge mode, SPEAKON output connectors. Moreover, it is protected against shorts and open circuits. Thanks to its large-size heat sinks and variable speed fans, QPS 6.0K can withstand the hardest heat conditions ensuring great reliability.

HD DESIGNED DRIVING POWER

Our HD amplifier technology features a very efficient power output section with a design focused on musicality, maintaining a natural and clear sound at all frequencies, with smooth highs and a tight, high-impact low end. The power supply rails continuously track the input signal for remarkable signal purity while preserving the high efficiency of the Class-D design. QPS amplifiers are bridgeable and maintain high reliability with complex loads as low as 2 Ohms nominal.



4 X 2500 W PROFESSIONAL POWER AMPLIFIER

QPS 10K

- 4 x 2500 W class HD power amplifier
- 20 ÷ 20000 Hz frequency range
- Fast response and low distortion
- Mono and bridge modes
- Extensive protective circuits
- Variable speed cooling system
- Signal, clip, fault led indicators
- XLR input connectors
- SPEAKON output connectors
- Limiter on each channel

ENERGIZE YOUR SOUND

QPS Series products are high-performance, versatile power amplifiers for both touring and install applications, using sophisticated Class-HD topology with four single-channel outputs or one/two bridged outputs, parallel or stereo. Three dip-switches allow setting the maximum output voltage peak for each channel among eight values. High-efficiency heat sinks and variable-speed fans can withstand the most extreme heat conditions ensuring steady power output stability over time. High quality, low distortion audio output, RCF reliability, and industry-standard speakON connectors make QPS Series the hassle-free solution for sound systems and permanent installation applications.



4 X 1500 W PROFESSIONAL POWER AMPLIFIER

QPS 6.0K

- 4 x 1500 W class HD power amplifier
- 20 ÷ 20000 Hz frequency range
- Fast response and low distortion
- Mono and bridge modes
- Extensive protective circuits
- Variable speed cooling system
- Signal, clip, fault led indicators
- XLR input connectors
- SPEAKON output connectors
- Limiter on each channel



IPS SERIES

IPS Series is a range of 2-channel professional amplifiers that combines high-quality performance and reliability with the latest power-amp technology. Three compact 2-RU devices with remarkable sound quality for both install and touring applications. Each amplifier features independent gain control, signal / clip and fault indicators, stereo XLR input and output link, mono / stereo / bridge switch, SPEAKON, and binding post output connectors. Moreover, it is protected against shorts and open circuits. Thanks to its high-efficiency heat sinks and variable-speed fans, IPS amplifiers can withstand the hardest heat conditions ensuring great reliability.



TWO CHANNEL PROFESSIONAL POWER AMPLIFIER

IPS SERIES

- (IPS 5.0K) 2 x 2600 W class H power amplifier
- (IPS 2.5K) 2 x 1250 W class H power amplifier
- (IPS 1.5K) 2 x 750 W class H power amplifier
- 20 ÷ 20000 Hz frequency range
- Fast response and low distortion
- Stereo, parallel, bridge modes
- Extensive protective circuits
- Variable speed cooling system
- Signal, clip, fault led indicators
- XLR input connectors
- SPEAKON and binding post output connectors
- Limiter on each channel

CUSTOMIZED QUALITY CONTROL

All amplifier modules are subjected to rigorous quality testing during the production process. Each device is quality controlled with automated equipment and human supervision. Our QC process ensures that every individual amplifier module performs at best off the production line and into the box. This unique system ensures extremely tight quality loops, securing a high overall quality level.

DEPENDABLE POWER, VERSATILE SOLUTION

IPS are high-performance, versatile 2U power amplifiers for install applications, using sophisticated Class-H topology for two single-channel outputs, two parallel outputs, or a single-channel bridge operativity. High quality, low distortion audio output, flawless reliability and safety, industry-standard speakON connectors, and binding post terminals make IPS Series electronics the workhorse solution for mobile sound systems and permanent installation applications.

REMARKABLE AUDIO PERFORMANCE

With a very high signal-to-noise ratio, IPS Series amplifiers also boast a very low total harmonic distortion, making it perfect for highly demanding music applications hence delivering perfect vocal intelligibility.

ELECTRONICS

ELECTRONIC DEVICES FOR ANY LIVE SOUND OR INSTALL USE

A complete range of powerful, robust, musical, and clean electronic devices for any live sound or install use. All electronics conform to all RCF quality requirements in terms of sound quality and reliability.



DX 4008

- 4 input - 8 output digital loudspeaker management system designed for the touring or fixed sound installation markets
- Sampling rate can be set to 96kHz
- Precise frequency control is achieved with its 1 Hz resolution
- Inputs and outputs can be routed in multiple configuration to meet any requirements
- The DX 4008 is shipped with a special PC Graphic User Interface (GUI) application - XLink
- XLink gives the user an option to control the DX 4008 unit from a remote PC via the RS232 serial communication link
- The GUI application makes much easier control and monitor the device, allowing the user to get the whole picture on one screen
- Programs can be recalled and stored from/to PC's hard drive, thus expanding the storage to become virtually limitless



DX 1616

- MATRIX AUDIO PROCESSOR
- Hybrid architecture DSP
- 48 KHz sampling, 40 bit floating point engine
- 16 x 16 I/O matrix
- Dante enabled network audio transport
- 8 AES/EBU inputs - 8 AES/EBU outputs
- Ethernet connectivity and control
- Maximum latency 3 ms
- Easy to use software GUI



RDNET CONTROL 2

- 2 OUTPUT MASTER UNIT
- Real-time USB device monitoring and control
- Auto detect device placement
- Control up to 2 SUB-NETS of up to 32 slave devices
- All devices are cyclically scanned ("polling") 10 times a second
- Connected devices are automatically added to the software synoptic



RDNET CONTROL 8

- 8 OUTPUT MASTER UNIT
- Ethernet (remote control) and USB (direct control) PC connection to RDNet
- Control up to 8 SUB-NETS of up to 32 slave devices
- All devices are cyclically scanned ("polling") 10 times a second
- Auto detect device placement
- Controlling slave devices status and functions
- Monitoring and displaying faults and warnings sent from slave devices
- Storing subnet user filters configuration in a removable memory card



RDNET 5 | SOUND SYSTEM MANAGEMENT AND CONTROL SOFTWARE

RDNet is a powerful management network and control platform for small to arena-sized sound systems and large-scale installations.



RDNet is an advanced platform for integrated monitoring and control of sound systems - from small live and installed setups to massive arena systems. Based on a robust networked architecture, RDNet combines system control, line array design, and comprehensive audio measurements into a single powerful software package. Engineers and technicians can intuitively manage every device on the network, from individual components to multiple groups. The platform provides full DSP control of compatible devices, with flexible configuration tools for perfectly tuning the system response at maximum speed. Users have real-time access and oversight of all key settings from a centralized interface.

RDNET MEASURES

RDNet Measure is a powerful 4-input Dual-Channel FFT Audio Analyzer able to measure Magnitude, Phase, RTA, Coherence, and Impulse response. Functions included spans from a delay finder, a multiple signal generator, and an integrated SPL meter/logger with calibration tools. There's no need for external software to get the job done.

THE TOOLBOX FOR SYSTEM DESIGN AND OPTIMIZATION

RDNet displays all audio devices connected to the network as objects on the main window. The real-time monitoring features a multitude of parameters such as fan speed, temperature, the inclination of a single speaker, VU Meters, peak levels, and more. The operator has complete control of time delay and equalization of every speaker, individually or grouped. With its built-in DSP, each device is an active part of the system, able to store presets, receive commands, and continuously send status information. Comprehensive monitoring is standard in RDNet: VU metering, clip indicator, limiter intervention, device inclination, communication issues—down to the status of a single component or a transducer—and much more.

FEATURES

- Array and Zones Grouping for self- and externally-powered systems
- Real-time Discovery and Complete Monitoring
- Complete Real-Time FFT Analyzer with EQ integration and Auto-Alignment
- Adjust Hi-Pass, EQ, Gain, and Delay on individual components
- New IP-based RDNet-OE architecture
- Cloud Storage and Import full
- Shape Designer Array Calculator



INDEX AND PART NUMBERS

COLUMN SPEAKERS

PRODUCT	Colour	220-240V	115V	100V	Page
VSA 2050 II	White	13100022	13100023	-	22
VSA 2050 II B	Black	13100053	13100054	-	22
VSA 2050 II	Custom	13100024	13100031	-	22
VSA 1250 II	White	13100025	13100026	-	22
VSA 1250 II B	Black	13100055	13100056	-	22
VSA 1250 II	Custom	13100027	13100032	-	22
VSA 850 II	White	13100028	13100029	-	23
VSA 850 II B	Black	13100057	13100058	-	23
VSA 850 II	Custom	13100030	13100033	-	23
L 2406T W	White	-	-	13000177	23
L 2406T	Black	-	-	13000169	23

HVL SERIES

PRODUCT	Colour	-	-	-	Page
HVL 15-L	White	13000640	-	-	25
HVL 15-P	White	13000565	-	-	25
HVL 15-S	White	13000705	-	-	25
HVL 15-L1	White	13000701	-	-	25
HVL 15-P1	White	13000700	-	-	25

HL LINE ARRAY MODULES

PRODUCT	Colour	-	-	-	Page
HL 2290	Black	13000405	-	-	27
HL 2260	Black	13000407	-	-	27

HL LINE ARRAY MODULES

PRODUCT	Colour	-	-	-	Page
HL 2240	Black	13000404	-	-	27
HL 20-WP	Black	13000473	-	-	27
HL 20-WP	White	13000643	-	-	27
HL 6	Black	13000726	-	-	27
HL 35-S	Black	13000732	-	-	27

Q 15 SERIES

PRODUCT	Colour	-	-	-	Page
Q 15	Black	13000698	-	-	29
Q 15-P	Black	13000728	-	-	29
Q 15-L	Black	13000727	-	-	29

COMPACT C SERIES

PRODUCT	Colour	-	-	-	Page
COMPACT C 45	Black	13000312	-	-	30
COMPACT C 45 WP	Black	13000803	-	-	30
COMPACT C 32	Black	13000281	-	-	30
C 3110-126	Black	13000284	-	-	31
C 3110-96	Black	13000283	-	-	31
C 3108-126	Black	13000282	-	-	31
C 3108-96	Black	13000281	-	-	31

COMPACT M SERIES

PRODUCT	Colour	8 OHM	16 OHM	100V	Page
COMPACT M 12	Black	13000596	-	-	33
COMPACT M 12 W	White	13000724	-	-	33
COMPACT M 10	Black	13000595	-	-	33
COMPACT M 10 W	White	13000723	-	-	33
COMPACT M 08	Black	13000594	-	-	33
COMPACT M 08 W	White	13000722	-	-	33
COMPACT M 06	Black	13000582	-	-	33
COMPACT M 06 W	White	13000721	-	-	33
COMPACT M 05	Black	13000581	-	-	33
COMPACT M 05 W	White	13000720	-	-	33
COMPACT M 04	Black	13000623	-	-	33
COMPACT M 04 W	b	13000725	-	-	33

COMPACT A SERIES

PRODUCT	Colour	-	-	-	Page
COMPACT A 15	Black	13000313	-	-	34
COMPACT A 12	Black	13000311	-	-	34
COMPACT A 10	Black	13000309	-	-	34

MAX SERIES

PRODUCT	Colour	-	-	-	Page
X-MAX 12	Black	13000658	-	-	37
X-MAX 10	Black	13000657	-	-	37
C-MAX 4112	Black	13000535	-	-	37
C-MAX 4110	Black	13000534	-	-	37
E-MAX 3112 MKII	Black	13000763	-	-	37
E-MAX 3110 MKII	Black	13000762	-	-	37

P SERIES

PRODUCT	Colour	8 OHM	16 OHM	100V	Page
P 3115T	Black	-	-	13000135	38
P 3115T W	White	-	-	13100082	38
P 2110T	Black	-	-	13000125	38
P 6215	Black	13000131	-	-	39
P 6215 W	White	13100083	-	-	39
P 8015S	Black	13000230	-	-	39
P 5228-L	Black	-	13000202	-	39
P 4228	Black	-	13000199	-	39
P 4228 W	White	-	13100081	-	39
P 3108	Black	13000198	-	-	39
P 1108T	Black	-	-	13000203	39
P 1108T W	White	-	-	13100084	39

SUB SERIES

PRODUCT	Colour	8 OHM	16 OHM	100V	Page
S 8015LP	Black	13000168	-	-	40
S 8028 II	Black	13000391	-	-	40
S 8018 II	Black	13000390	-	-	40
S 8015 II	Black	13000398	-	-	41
S 29	Black	13100097	-	-	41
S 19	Black	13100096	-	-	41
S 15	Black	13000667	-	-	41
S 12	Black	13000618	-	-	41
S 10	Black	13000617	-	-	41

MONITOR SERIES

PRODUCT	Colour	8 OHM	16 OHM	100V	Page
WMR 60T	Black	-	-	13100050	42

MONITOR SERIES

PRODUCT	Colour	8 OHM	16 OHM	100V	Page
WMR 60T W	White	-	-	13100071	42
WMR 50T	Black	-	-	13100051	42
WMR 50T W	White	-	-	13100074	42
CMR 60T W	White	-	-	13100045	42
CMR 50T W	White	-	-	13100044	42
MR 50	Black	13100038	-	-	43
MR 50 W	White	13100040	-	-	43
MR 50T	Black	-	-	13100039	43
MR 50T W	White	-	-	13100041	43
MR 40	Black	13100034	-	-	43
MR 40 W	White	13100036	-	-	43
MR 40T	Black	-	-	13100035	43
MR 40T W	White	-	-	13100037	43
PMR 60T	Black	13100100	-	-	43
PMR 60T	White	13100098	-	-	43

DMA AMPLIFIERS SERIES

PRODUCT	Colour	EU	US	UK	Page
DMA 504	Black	12100035	12100048	12100049	44
DMA 82	Black	12100026	12100040	12100043	44
DMA 162	Black	12100027	12100041	12100044	44
DMA 162P	Black	12100028	12100042	12100045	44
RDNET BOARD DMA	Black	12399048	12399048	12399048	45
RM-KIT DMA	Black	13360426	13360426	13360426	45
BM 404	Black	14322031	14322031	14322031	45
RC 401 EU B	Black	12399051	-	-	45
RC 401 EU W	White	12399052	-	-	45

DMA AMPLIFIERS SERIES

PRODUCT	Colour	EU	US	UK	Page
RC 401 US B	Black	-	12399053	-	45
RC 401 US W	White	-	12399054	-	45
BT BOARD DMA	Black	12399065	12399065	12399065	45
TRF-KIT DMA 82	Black	12399068	12399068	12399068	45
TRF-KIT DMA 162	Black	12399069	12399069	12399069	45

XPS 16K AMPLIFIERS

PRODUCT	Colour	EU	US	UK	Page
XPS 16K	Black	12100037	12100074	12100076	46
XPS 16KD	Black	12100064	12100075	12100077	46

IPS SERIES AMPLIFIERS

PRODUCT	Colour	220-240V	100-120 V	115V	Page
IPS 5.0K	Black	12135087	12135086	-	49
IPS 2.5K	Black	12100059	12100060	-	49
IPS 1.5K	Black	12100065	12100066	-	49

ELECTRONICS

PRODUCT	Colour	-	90-240V	-	Page
DX 4008	Black	12135033	-	-	50
DX 1616	Black	12399033	-	-	50
RDNET CONTROL 8	Black	17170154	-	-	50
RDNET CONTROL 2	Black	17170163	-	-	50



www.rcf.it

HEADQUARTERS:

RCF S.p.A. Italy
tel. +39 0522 274 411
e-mail: info@rcf.it

RCF UK
Int. +44 (0) 1702 800846
e-mail: info@rcfaudio.co.uk

RCF France
tel. +33 9 86 02 73 52
e-mail: france@rcf.it

RCF Germany
tel. +49 (0) 2203 925370
e-mail: sales@rcf.de

RCF Spain
tel. +34 91 817 42 66
e-mail: info@rcfaudio.es

RCF Benelux
tel. +49 (0) 2203 925370
e-mail: benelux@rcf.it

RCF USA Inc.
tel. +1 732-9026100
e-mail: info@rcf-usa.com

Note to specifications: audio power data refers to peak power