



PLACES OF WORSHIP

SOLUTIONS

CONTENTS

RCF Installed Sound	pag.	4
Engineering Support Group	pag.	7

CASE STORIES

Madison Luther Church - Wisconsin (USA)	pag.	9
St James the Apostle Parish - Derrimut Rd (Australia)	pag.	11
Monastery of St. Nikola Tavelić - Rijeka (Croatia)	pag.	13
Rotunda Church - Mosta (Malta)	pag.	15
Arts Centre Immanuelkirche - Wuppertal (Germany)	pag.	17
Mosaic Church - Nashville (USA)	pag.	19
Saints Hoan-Thien Catholic Centre - Keysborough (Australia)	pag.	21
Lugano Cathedral (Switzerland)	pag.	22
Cathedral Of Volterra (IT)	pag.	22
Tewkesbury Abbey (UK)	pag.	23
The Sheikh Zayed bin Sultan Al Nahyan Mosque (UAE)	pag.	23

PRODUCT SERIES

ACTIVE STEERABLE SPEAKERS	pag.	24
PASSIVE COLUMN SPEAKERS	pag.	25
HDL SYSTEM	pag.	26
COMPACT C SERIES	pag.	28
C SERIES	pag.	29
COMPACT M SERIES	pag.	30
MONITOR SERIES	pag.	32
ACTIVE SUBWOOFERS	pag.	34
PASSIVE SUBWOOFERS	pag.	35
RDNet 5	pag.	36

INDEX AND PART NUMBERS	pag.	38
------------------------	------	----

RCF Installed Sound



WE CARE ABOUT YOUR SOUND

RCF is a leading technology brand of professional audio equipment, transducers, electronics, DSP, and custom solutions for any sound and any place. Established in Italy in 1949, RCF has been committed to the perfect reproduction and amplification of sound for events and concerts, recording, public address, broadcast, and portable audio. RCF has consistently transformed the pro-audio industry, developing components and products in-house to ensure maximum quality and reliability to the end-user. The comprehensive catalog covers all aspects of the audio chain to satisfy sound engineers, architects, and system integrators.

A REFERENCE IN INDUSTRY

RCF is always at the forefront of technologies and materials research, providing tools, documentation, technical support to help professionals deliver optimized sound to the listener. Training activities for all audio professionals and enthusiasts draw into 70 years of experience and knowledge of its engineers. The internal support engineering team is on hand to assist architects, system designers, or integrators during the design and customization of complex systems. Tangible technical expertise, modern Italian manufacturing facilities, and continuous technological refinement set RCF as an essential reference for all audio professionals and enthusiasts. RCF supports customers in its offices in the United States of America, France, Germany, Italy, Spain, the United Kingdom, and a network of more than hundreds of trusted distributors throughout the rest of the world.

RCF SOUND CULTURE

RCF is a leading technology brand of professional audio equipment, transducers, electronics, DSP, and custom solutions for any sound and any place. Established in Italy in 1949, RCF has been committed to the perfect reproduction and amplification of sound for events and concerts, recording, public address, broadcast, and portable audio. RCF has consistently transformed the pro-audio industry, developing components and products in-house to ensure maximum quality and reliability to the end-user.

ENGINEERED FOR HUMAN BEINGS

The Installed Sound range represents a prominent chapter in the company's long history, continuously expanding one of the most comprehensive product portfolios offering dedicated integrated audio solutions with superior acoustic performance. This catalog includes speaker systems designed to meet all pro-audio contractors requirements for fixed installations like café or theme bars, retail outlets, places of worship, theatres, restaurants, live venues, dance clubs, theme parks, airports, hotels, railway stations, shopping malls, auditoriums, congress centers, sporting facilities, stadia, etc.

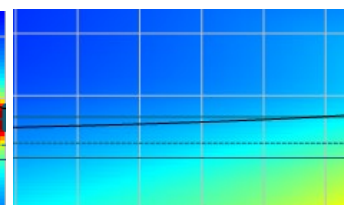
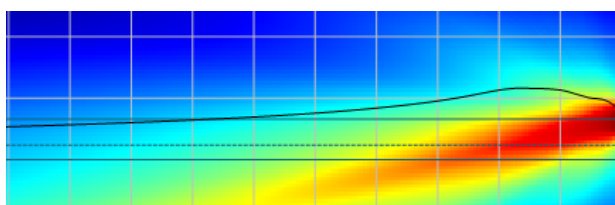
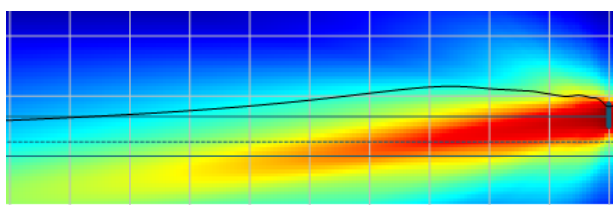
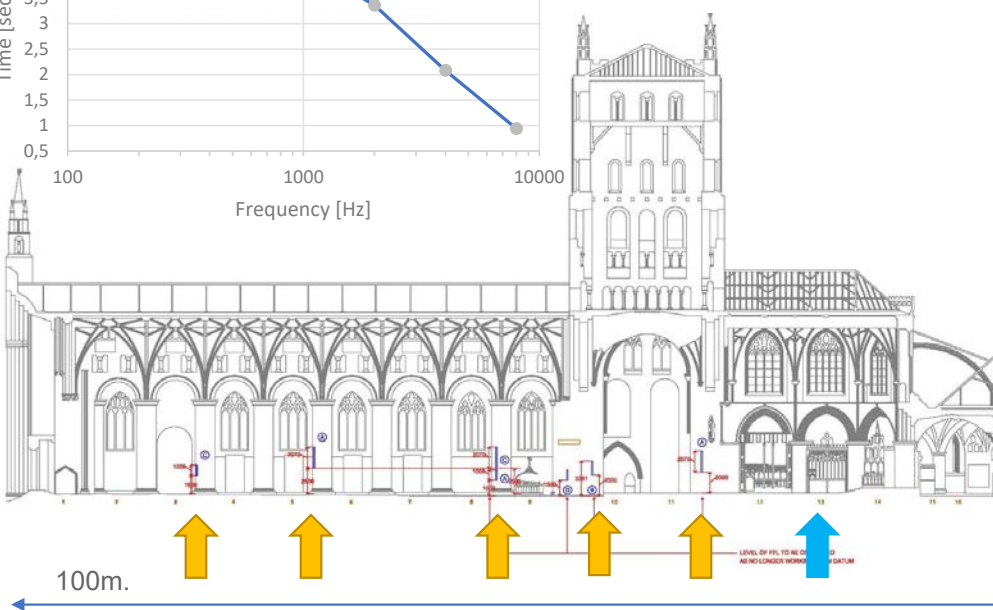
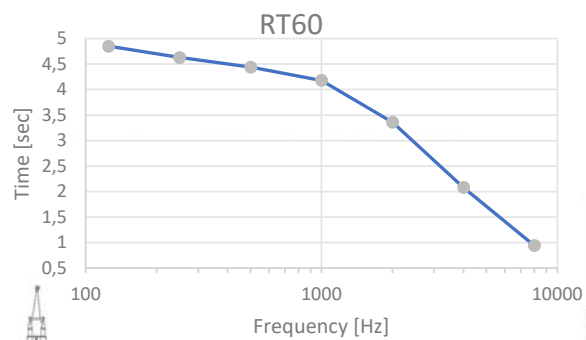
FOREFRONT TECHNOLOGY

Innovation comes first and foremost, thanks to the RCF R&D team, developers of many original products and technologies, such as the hyper-venting system, the inside/outside voice coil, the dual silicone spiders, and countless mechanical, digital, and leading-edge electronic solutions. RCF is one of the few loudspeaker companies worldwide that internally manufacture transducers, speaker systems, electronics, and software. All products feature RCF's exclusive designs and technologies.





Tewkesbury Abbey



ENGINEERING SUPPORT GROUP

CUSTOMIZATION WITHOUT BOUNDARIES

Our Engineering Support Group works side by side with the R&D Department to create tailor-made equipment based on the client's real needs – complete with rigging accessories, signal processing, or custom mechanics. We are not only suppliers of standard products but also a team of highly skilled engineers who develop personalized audio solutions. Contact the RCF team to learn more about customization and color options to suit your unique environment. Each project has important benchmarks and we will help you to get the job done.

RCF EXPERIENCE AT YOUR SERVICE

The direct involvement in particularly complex projects Worldwide is continually raising the know-how and reputation of our team of specialists that is considered one of the best Engineering Support Groups in our industry. A system design must always consider the environment's acoustics, the architectural and installation constraints, the maintenance costs, and the user's requirements. According to cost and performance requirements, the extensive and complete range of RCF products enables the Engineering Support Group to submit multiple design solutions optimized for each project.

RCF is committed to providing complete support, helping our customers choose the most suitable solutions for their projects to achieve the best results. This support team is crucial to RCF's continual success. We continue to invest in our knowledge and skill by expanding our engineering team of product specialists and the latest equipment and software technologies.

- **DESIGN PROPOSAL**

Based on supplied venue details, including environmental acoustic simulation, product list, block diagram, and speaker coverage mapping.

- **DESIGN VALIDATION**

Based on the client's design, we guide the proper selection and placement of RCF products.

- **DESIGN OF ALTERNATIVE SOLUTIONS**

Based on existing specs, we provide advice and improved system configurations based upon RCF products to optimize the installation.

- **ACOUSTICAL CONSULTANCY**

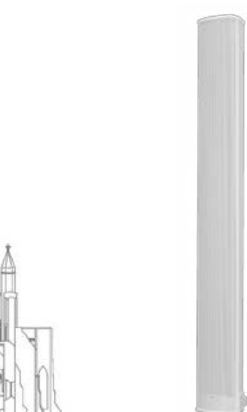
We help with the definition of the project's specifications in cooperation with architects and contractors.

- **ON SITE**

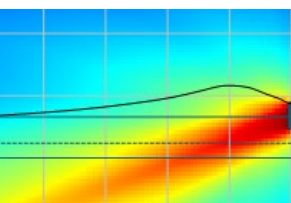
We provide system start-up and commissioning. RCF produces pre-wired racks on request, complete with connection diagrams and operation manuals.

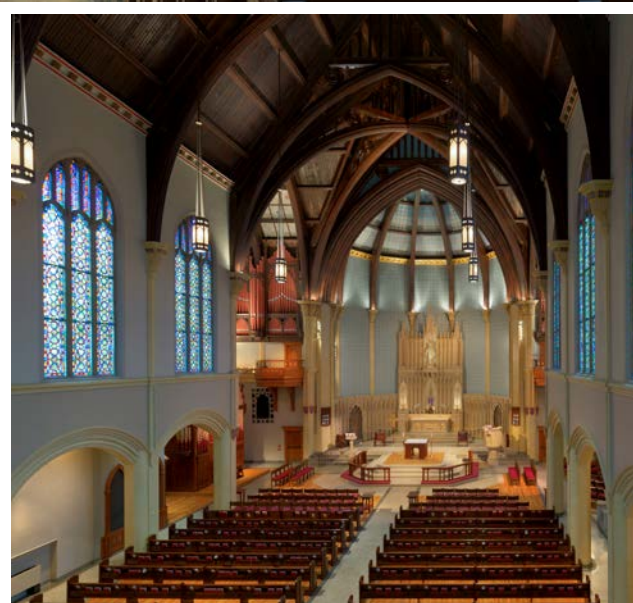
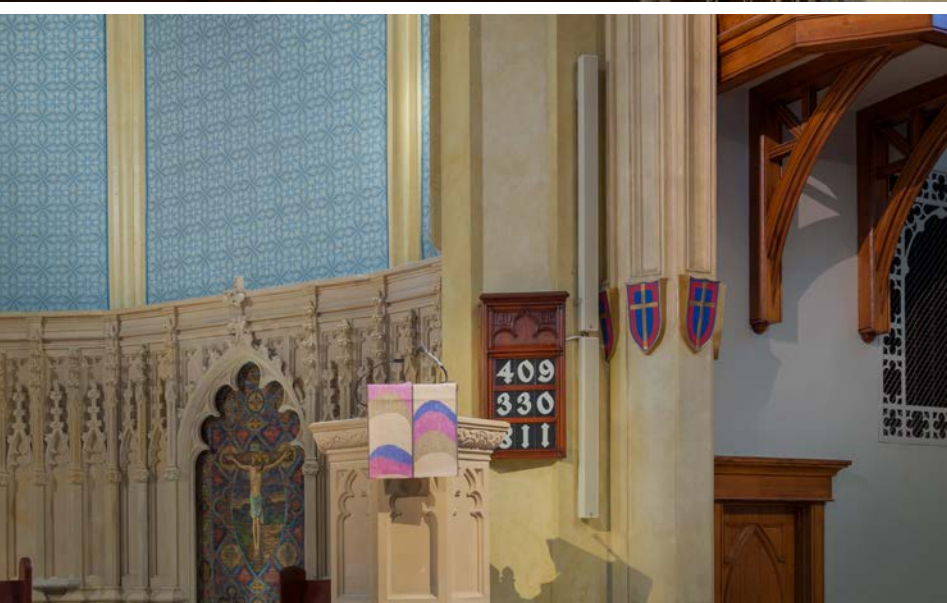
AUDIO ACADEMY TRAINING ACTIVITIES

Our training sessions are available in our worldwide educational program or can be customized according to the client's requirements. ESG members are involved in education and training activities where they can exchange information and ideas with consultants and contractors participating in the RCF Audio Academy program. RCF provides an extensive selection of courses and workshops covering several subjects such as new products, technologies, user cases, and in-depth professional training. Sessions are organized worldwide by our Instructors/Engineers and also in RCF Audio Academy facilities in Italy.



■ CS 6940





Madison Luther Church - Wisconsin (USA)

In 1905 Evangelical Lutheran national church leaders envisioned a new mission in Madison, Wisconsin. The building stands tall in the heart of the University of Wisconsin campus despite the challenges it has faced over the decades including fires, threats of bankruptcy, a bombing, and cultural shifts with the denomination itself. These days, the church services the intergenerational faith community in the region of the state's capital.

Entering the nave, a stone living-water font greets worshippers into this architecturally stunning worship space. The floor plan is laid out in traditional cruciform design. With 40-foot high arched ceiling, a domed apse frames an ornate centerpiece that rises two stories above the altar with a statue of Jesus Christ looking down watching over his flock. On either side, ornamental organ pipes add to the majestic look with their 56-rank Austin pipe organ and Steere tracker organ.

In 2016, Luther Memorial leaders developed a new master plan for the church. Milwaukee-based Kubala Washatko Architects was called in to assist in restoring the church to its original grandeur. Having worked previously on audio systems with System Design Engineer Jason Keagy from Baraboo, Wisconsin-based Peak Systems Group, they were invited in to partner on the upgrades.

With a 100-foot throw from the speaker position to the furthest row of seats and the room exhibiting a nearly three-second delay time, Peak opted to use one VSA 2050 and one VSA 1250 on either side of the altar area. Using two cabinets also provided Peak with the ability to provide even coverage to both the front and transepts area with one VSA, the other covering the long-throw needs of the nave. In addition to the four VSA used to cover the sanctuary, Peak installed two VSA1250 in the rear to cover a choir loft area above the entranceway.

The result of coverage was "spot-on perfect," notes Mundth. "It was amazing that even in the last row, once you stood up you were outside the coverage area. The ability to target the congregation seating area is what makes the VSA such a useful solution." Senior Pastor Brad Pohlman concurs. "This has been a stunning improvement of sound quality. They really sound nice. I couldn't ask for any more out of them."

Products installed



VSA 2050 II



VSA 1250 II



St James the Apostle Parish - Derrimut Rd (Australia)

St James the Apostle Parish has proudly served its local Catholic community in Hoppers Crossing for over two decades. Mindful of the rapid population growth of Melbourne's outer western suburbs at the turn of the century, local parish priests from the nearby St Peter Apostle Mission purchased a ten-acre wheat paddock, which would become the future site of St Peter Apostle Primary School and its resident church, St James the Apostle Parish. Originally constructed in 2000, the church has become a multicultural hub of worship and community activities. Late 2019 saw the church enter a complete rebuild phase, with the structure being redesigned from the ground up to accommodate modernized facilities and a growing community base. As part of the redesign, AV professionals at RTR Productions were consulted on supply and setup of a new PA system that would meet the church's needs. An RCF HDL 6-A line array system was chosen for the parish and installed by integration specialist Digital Link Solutions. Drew Menard, General Manager of RTR Productions, explains why the RCF HDL system was chosen: "As the parish is a multicultural space, attendees are often people for whom English is a second language, making voice reinforcement a priority.

The parish was willing to invest in this HDL solution to ensure verbal intelligibility within the space. A line array system gives us more control over where the audio is delivered, providing clarity for voice, whilst also being powerful enough to handle light-to-moderate live music requirements."

St James the Apostle Parish features 3 x HDL 6-A modules for each side, each individually capable of an impressive 131 dB max SPL, with a linear frequency response of 65Hz – 20,000Hz. The HDL 6-A from RCF is a low-weight, ultra-compact line array system designed for consistent long-term performance. The system's combination of full-range, high-quality audio reproduction and low-profile aesthetics have helped solidify the Italian brand's HDL technology as a highly dependable option for installation professionals seeking line array capabilities in an unobtrusive form factor. "The HDL system has certainly garnered some praise here since its installation, but even before then, we had the architects from Smith + Tracey, who were overseeing the parish rebuild, impressed by the system's capabilities. Smith + Tracey were very focused on the overall result for the client- acoustics included- and were going to add reflection absorbing materials to the build.

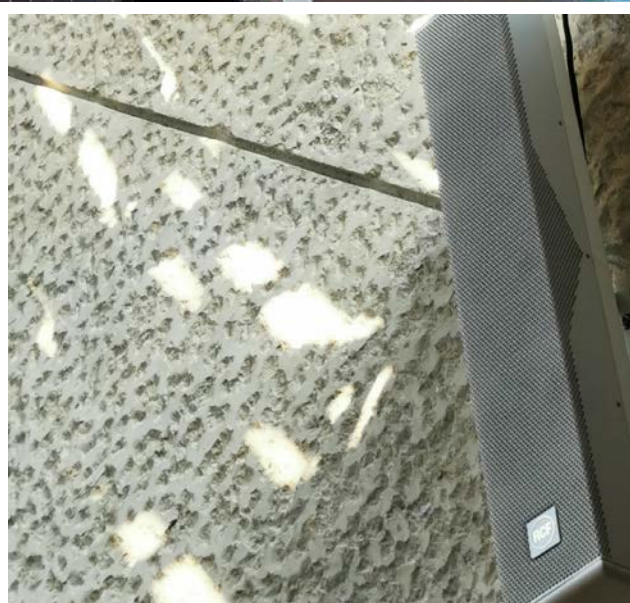
However, after looking into the capabilities of the HDL system, they concluded with us that investing more on controlling the sound via line array- instead of a simpler PA and acoustic treatment combination- was the superior option." With its feature-rich design, advanced DSP processing, and RCF's FIRPHASE phase alignment technology, RCF's HDL 6-A was the ideal choice for adding verbal intelligibility and an improved listening experience to the parish's faculties.

Products installed



HDL 6-A





Monastery of St. Nikola Tavelić - Rijeka (Croatia)

The church, built in 1988 and designed by architect Magaš, has an unusual “protruding” form that resembles a dove or ark. After many years, the existing audio system of the church was outdated and produced poor sound quality, facing acoustic challenges due to the large concrete interior surfaces and decorative woodcuts.

To improve sound coverage and speech intelligibility, LAV Project proposed installing new RCF speakers. Four RCF L 2406T W speakers were installed above the altar to cover the congregation area, four RCF DM 41 B speakers in the apses above the seats and choir, two RCF MQ 80P W outdoor speakers above the entrance doors and an RCF MR 40 W control speaker in the sacristy.

The RCF L2406TW is equipped with six 5” woofers and four 1” dome tweeters placed in front of the center woofers. This special design allows coherent dispersion of sound while minimizing echo. The wide horizontal coverage angle and controlled vertical dispersion enable correct sound reproduction over a wide area and help limit microphonics and reverberant sound. In order to improve the intelligibility of the speech on the speakers, we activated the speech filter.

All audio components are controlled by a rack cabinet in the sacristy. New cabling was also installed for all speaker positions. The installed speakers provide natural sound reproduction while blending in visually. The client was very pleased with the results. The new audio system delivers high-quality sound while respecting the church’s unique architecture and spiritual atmosphere.>

Products installed



L 2406T



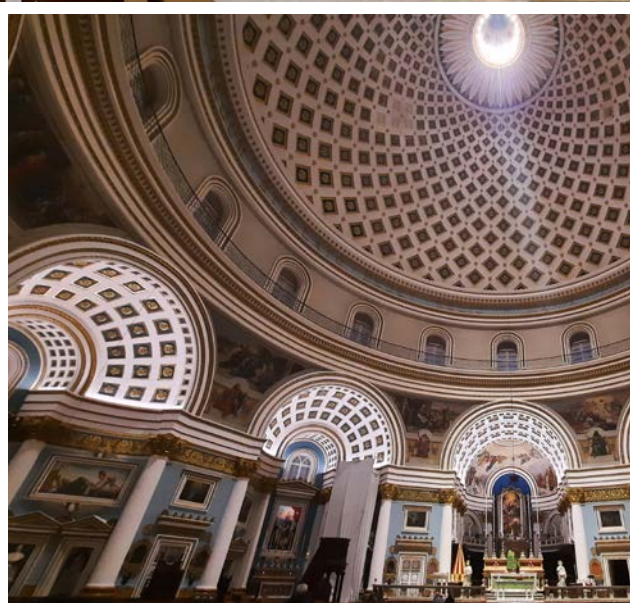
DM 41



MQ 80P



MR 40



Rotunda Church - Mosta (Malta)

The Mosta Rotunda is a circular neoclassical church located in the Maltese town of Mosta. The RCF Engineering Support Group collaborated with RCF's local distributor, "The Sound System Co Ltd," which was tasked with installing and optimizing the renewed sound system of the church. The installation consisted of eight microphones connected to an RCF M18 digital mixer, two RCF VSA active steerable columns, and infill speakers, as part of the renovation of the church's internal audio system. The team worked to ensure even and optimized intelligibility across the entire seating area, despite the persistent reverberation caused by the church's architecture.

Designed by Giorgio Grognet de Vassé and built in the 19th century, the Mosta Rotunda boasts a dome that is 37 meters in diameter, inspired by the Pantheon in Rome. It's the 3rd largest unsupported dome Church in the world. During World War II, the church was struck by a bomb that pierced the dome and fell among the 300 worshipers in prayer but did not explode, an event known as the Miracle of Mosta. Today, the Mosta Rotunda is not only a place of worship but also a popular tourist attraction with its stunning architecture and rich history.

To reduce reflections that could negatively impact speech intelligibility, the optimal solution was to install a single line source using the digitally controlled VSA column array. This system relies on powerful digital signal processors (DSPs) to direct the audio signal of each speaker towards the listening area. The VSA column array is a multi-amplified vertically steerable array, which means that each individual speaker is separately amplified and digitally controlled, so the sound can be vertically tilted without inclining the cabinet. Additionally, it is fully compatible with RDNet, the proprietary RCF speaker management software. The installation includes a main VSA 2050 II aimed far-field, mounted on top of a VSA 1250 II used as a downfill. Both arrays are fixed to the wall.

Francesco Venturi, system engineer of the RCF ESG, illustrates the optimization workflow: "We started by acquiring far-field STIPA measurements and optimized VSA 2050 II beaming and tilting by accessing the speaker configuration, using an RCF Control2 interface and RDNet software," said Venturi.

Once the beaming preset was optimized, the team performed FFT measurements to acquire transfer functions magnitude plots to tune VSA 2050 II frequency response upon Church acoustics. Venturi continues, "We shaped VSA 2050 II response by acting on the DSP parametric equalizer, using RDNet software. The process was then repeated for the near-field VSA 1250 II steerable array, first configuring the beaming preset, then optimizing the response".

After tuning, the speaker system was able to provide rich and accurate voice reproduction with an even intelligibility figure above 0.50 (inside the empty church). The RCF M18 digital mixer allowed optimization for each microphone for gain, gate, and EQ settings.

"The improvement in intelligibility with the new RCF steerable array audio system is truly remarkable!" exclaimed Jon Vella Zarb of The Sound System Co Ltd. Locally, the church is notorious for its poor acoustics, RCF rose to the challenge and the VSA system truly exceeded my expectations, providing excellent audio to the Mosta's congregation!"

Products installed



VSA 2050 II



VSA 1250 II



M 18



DM 61



Arts Centre Immanuelkirche - Wuppertal (Germany)

Wuppertal, Germany - The arts centre Immanuel, housed in the rededicated church building of Immanuelkirche in Wuppertal (Germany), impresses with a versatile and innovative programme that also features experimental events. The stage design in the house itself is as varied as the centre's programme. To prepare for all event possibilities, the venue management opted for permanently installed loudspeaker systems from RCF and combined them with mobile components. As a long-standing partner, taking care of day-to-day operations in the areas of audio and stage technology, Guido Ogrzewalla's company Safe in Sound was commissioned with planning and installation of the new system.

The Immanuelkirche looks back on a changeful history and has been an arts centre operated by a supporting association for 35 years. With three stages, side galleries and the apse, various possibilities for organising events for chamber concerts, jazz evenings, weddings, or conferences are available. Guido Ogrzewalla opted for a mixture of permanently installed components and mobile stage sound systems to find the best possible and most flexible solution.

Janine Ballein, managing director of the arts centre Immanuel, on the use of RCF systems: "When modernising our audio system, it was crucial to us that we could flexibly cover the uncommon event and stage situations with the new audio components. Our now used mix of fixed and mobile loudspeakers also reduces our set-up effort enormously." On the walls, Safe in Sound installed 4x RCF VSA 2050 and 8x RCF VSA 1250 modules (each in white); active beam-steering column speakers, equipped with 20 or 12 3.5" speakers, depending on the version. Their design alone makes them fit perfectly into the architecture and the nave of the Immanuel church. As mobile stage sound units, 4x RCF SUB 905-AS II in cardioid mode and 6x RCF TT052-A modules, which are placed as nearfills on the stage, are in place. In case special stage monitors are required, additional RCF HD 10-A units are available, combined with additional components from Safe in Sound's stock. Guido Ogrzewalla comments on the choice of components and installation: "The RCF products work very well together, regardless of whether they are permanently installed or mobile on stage. All components are connected to RDNet and can be controlled perfectly, and in great detail, so we can achieve the best possible sound result for every event situation."

Products installed



VSA 2050 II



VSA 1250 II



HD 10-A MK5





Mosaic Church - Nashville (USA)

With over 50 years of ministry and community service, Tabernacle Church, located just outside Nashville, in Clarksville Tennessee, decided in 2017 that to keep up with their tremendous growth, they would undergo a monumental change with a grand new construction project, to reemerge as Mosaic Church—adding 65,000 square feet to their campus, including a 1,500 seat performance space.

When audio and integration firm, Holly Media was asked to oversee the expansion of the performance space, owner Fred Holly, with over 30 years of pro audio experience, led the design effort. “With new dynamics and changing needs, the scope of the ministry has changed—it’s become a new work,” said Holly. “Tabernacle seemed old fashioned. The name didn’t match the demographic of our church because it’s very diverse—and it’s thriving. The new Mosaic Church wanted to reflect that.”

When Holly was referred to RCF and was introduced to Jim Reed [RCF product specialist and system designer] his curiosity was piqued. “When we spoke, Jim said he was willing to demo an RCF TT rig personally, he had my attention.” noted Holly. “I sent him the final room schematic and he returned an EASE drawing, and I was like, ‘when can you come?’ [laughs] I was very excited about the possibilities.”

Reed put together a complete system which included: 16 [2x8] TTL 55-A active line array modules, four companion TTS 56-AS active subwoofers, two TT 25-CXA active floor monitors, and four TT 20-CXA active monitors for the stage. For added coverage, Reed also added nine HDL 26-A active line arrays for center and front fills for added coverage.

Upon completion of the installation, RCF product specialist Zachary Anthony was brought in to provide tuning, optimization, and training. “The sound quality from a TT rig is exceptional, and paired with the acoustic treatments, the room is near perfect.” said Anthony. “I stopped turning up at 110db at mix position. Listening to that system is like listening to a giant pair of studio monitors — this room is an absolute pleasure to mix in. I don’t know where you can go to get a better [sound] experience. The performance space at the Mosaic is the best I ever heard. I can’t say that I’ve heard better.”

Products installed



TTL 55-A



TTS 56-A



TT 25-CXA



TT 20-CXA



HDL 26-A



Saints Hoan-Thien Catholic Centre - Keysborough (Australia)

The Saints Hoan-Thien Catholic Centre in Keysborough, Victoria, is situated on 4 hectares of land owned by Melbourne's Vietnamese Catholic community. Over the years, the Community Centre has been the site of many milestones for the local Catholic populace, such as festivals, congresses, and celebrations. Across from the cardinal building lies the 'Our Lady Of La Vang' shrine, a newly completed house of worship that has been a long-term labor of love for the fellowship. Within the bright inner expanse of the shrine, the building's crisp white roof dominates the architecture. Hanging cleanly from either side of the far end, sit two compact RCF line arrays. Looking almost transparent in their optional matte white finish, the HDL 6-A modules blend perfectly into the supernal scene. Supplied by Factory Sound in Melbourne, and recently set up by installer UB Group, the system provides Front of House audio coverage for voice reinforcement, music playback, and occasional live instrument reinforcement for the venue's regular church Services.

UB Group Director, Bang Le, explains his choice of technology for the shine- "Based on their audio requirements and budget, the HDL 6-A system was easily the best option. We needed something with a low visual profile and something that we could count on to deliver great sound throughout regular use. The HDL series is very neat, looks good with the architecture here, and has a fantastic size to power Ratio."

RCF's HDL 6-A system is an ultra-compact line array series designed for long-term performance. The Italian brand's combination of low-profile aesthetics and full-range, high-quality audio reproduction has solidified the HDL series as a go-to workhorse system for many installers. With a structurally wooden-reinforced composite polypropylene enclosure, touring-grade mounting features, and an efficient acoustic design, the HDL series is a highly dependable option for installation professionals seeking line array audio with a small form factor. Both the left and right arrays at the shrine feature 6 x HDL 6-A modules, each individually capable of an impressive 131 dB max SPL, as well as 2 x HDL 12-AS active flyable subwoofers. The HDL 12-AS are the perfect companion sub modules to the HDL 6-A, housing a 12" woofer and bringing the overall frequency response of the system down to 40 Hz.

"The primary function of the system will be sound reinforcement for speech and some live music- especially things like Christmas carols and special events where the space may get filled more than usual- situations where a little more power will be required. I have been working with RCF equipment for years and I have confidence in the output and reliability of the brand," says Bang. For one of Australia's largest migrant communities, the Our Lady of La Vang Shrine is a shared dream made manifest - a project that has seen three Melbourne archbishops and been the work of generations of Vietnamese families. The addition of RCF's precision Italian hardware -born of a vast heritage of expert engineering- helps elevate the space further, from impressive to divine.

Products installed



HDL 26-A

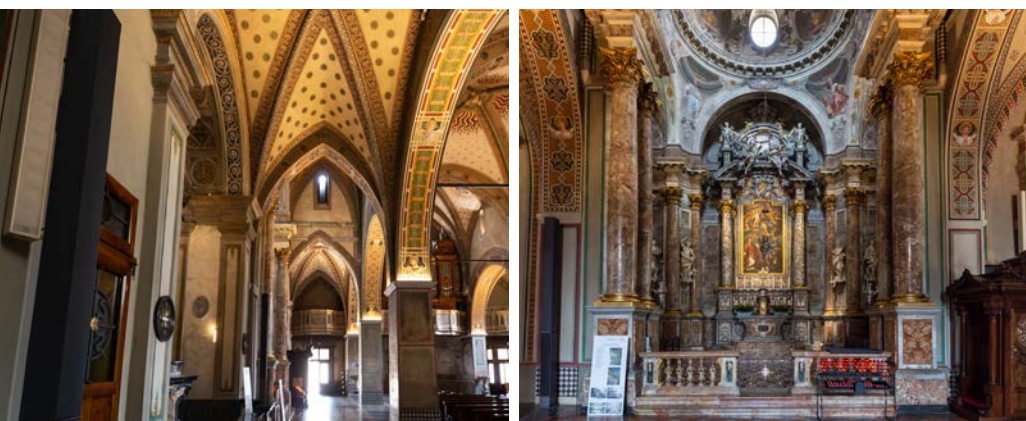
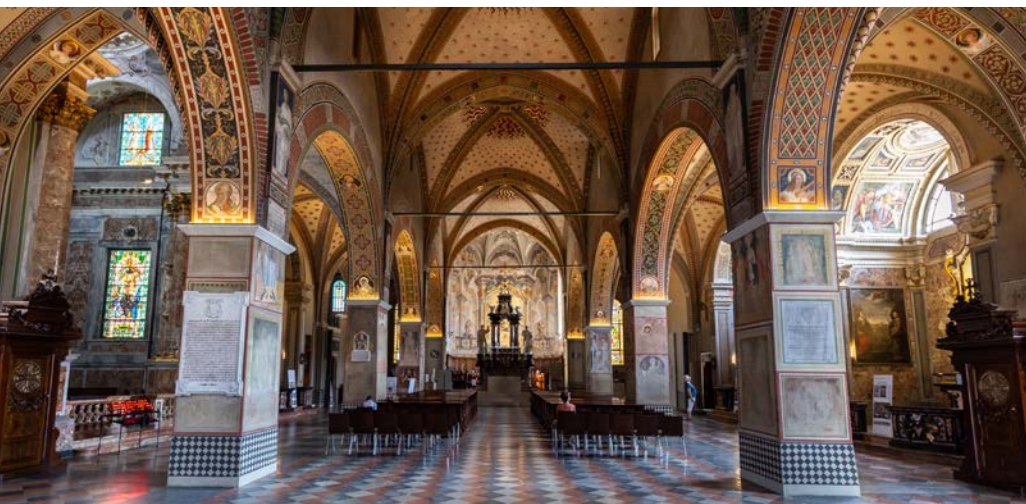


HDL 6-A



HDL 12-AS

Lugano Cathedral (Switzerland)



Products installed



VSA 2050 II



VSA 1250 II



TT 051-A II

Cathedral Of Volterra (IT)



Products installed



L 2406T

Tewkesbury Abbey (UK)



Products installed



VSA 2050 II

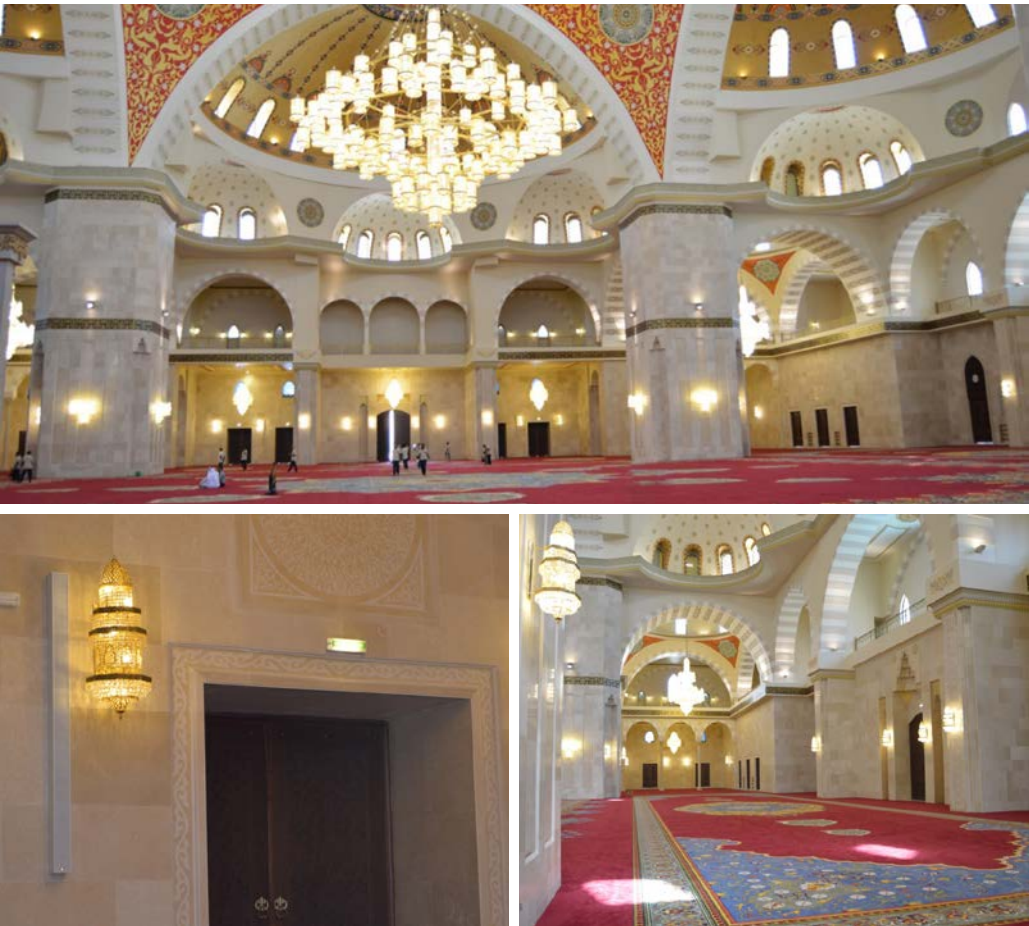


VSA 1250 II



CS 6940EN

The Sheikh Zayed bin Sultan Al Nahyan Mosque (UAE)



Products installed



VSA 2050 II



L 2406T

ACTIVE STEERABLE SPEAKERS

Advanced column array speakers with fixed or controllable vertical directivity. Suitable for acoustically critical applications or spaces with architectural constraints.

The VSA II system allows the audio signal to be addressed exactly to the listening area, avoiding the radiation of the acoustic energy to ceilings and empty floors; this eliminates any bad reflections that would affect speech intelligibility, mainly in critical environments with high reverberation. VSA offers a precise directivity and control to give high intelligibility performance with wide frequency response, high-dynamics and coherence at distance. Thanks to the reliable and powerful amplifiers, the accurate speaker design, and the high efficiency of the digital technology, VSA II is able to achieve an extended and stable coverage, preserving at the same time a smooth uniform horizontal coverage.

RDNET

The RCF RDNet is the perfect tool to help you to configure your VSA II system setup in any venues. The software helps to monitor and control all individual speakers with its own DSP setting and to secure the best performance of the system configuration. RDNet is a secure and robust management for small, medium, and arena-sized sound systems as well as complex and extended installations. Based on a proprietary network protocol RDNet provides straightforward monitoring and intuitive control of the RCF audio system down to every connected device/object.



VSA SMART RC

The VSA-RC is an easy way to control the VSA speakers through the VSA Remote App available on iOS or Android. The following data are configurable on each VSA through the VSA-RC remote control:

- 20 x Class D, 50 W amplifiers (VSA 2050 II)
- 12 x Class D, 50 W amplifiers (VSA 1250 II)
- 12 x Class D, 50 W amplifiers (VSA 850 II)
- 96 dB SPL Max
- 650 W RMS Power
- 1300 W Peak Power
- 100 ÷ 18000 Hz Freq. Range
- Vertical Coverage Beam from 10° to 30°
- Vertical Steering from 0° to -40°
- 20 x 3.5" neo full range speakers (VSA 2050 II)
- 12 x 3.5" neo full range speakers (VSA 1250 II)
- 8 x 3.5" neo full range speakers (VSA 850 II)
- Standard installation accessories included
- Extruded aluminium body



PASSIVE COLUMN SPEAKERS

Two and three-way column array speakers for both speech and music, suitable for acoustically critical applications or with architectural constraints.

PRECISION COVERAGE

These two- and three-way column array speakers are engineered to provide wide horizontal and narrow vertical coverage, ensuring optimum sound distribution across listening areas while allowing a flat-wall installation. Engineered with over six decades of expertise in phased array acoustics, this configuration is particularly beneficial in acoustically critical applications or locations with architectural limitations such as churches or auditoriums, prioritizing clarity and intelligibility in every sound detail.

ARCHITECTURAL HARMONY

RCF column speakers offer a perfect blend of stylish design and high-performance audio, making them ideal for environments that demand clear sound and aesthetic harmony. These multipurpose column speakers are designed to complement any architectural décor, making them versatile for spaces like conference rooms, lecture halls, retail stores, and transit areas where both form and function are paramount.

CS 6940EN

- 109 dB SPL Max
- 8 x 3" fullrange transducers
- 0.75" dome tweeter
- 40 W RMS Power
- 160 W Peak Power
- Power selectable (100 V): 40-20-10-5-2.5 W
- 140 ÷ 20000 Hz Freq. Range
- 194° x 30° coverage angle
- Thermal fuse protection.
- Protection grade IP66

CS 6520EN

- 105 dB SPL Max
- 4 x 3" fullrange transducers
- 0.75" dome tweeter
- 20 W RMS Power
- 80 W Peak Power
- Power selectable (100 V): 20-10-5-2.5-1.25 W
- 140 ÷ 20000 Hz Freq. Range
- 185° x 47° coverage angle
- Thermal fuse protection.
- Protection grade IP66

MQ 100L

- 112 dB SPL Max
- 2 x 3.5" woofer
- 2 x 3.5" midrange
- 2 x 0.75" dome tweeter
- 80 W RMS Power
- 320 W Peak Power
- Power selectable (100 V): 40-20-10-5 W
- 130 ÷ 20000 Hz Freq. Range
- 180° x 60° coverage angle
- The mounting accessories are included

L 2406T

- 126 dB SPL Max
- 200 W RMS Power
- 800 W Peak Power
- Directivity Index Q: 9
- 100 ÷ 20000 Hz Freq. Range
- 150° x 30° coverage angle
- 4 x 1" Dome Tweeter
- 6 x 5" Woofer
- 2000 Hz Crossover Frequencies
- EUROBLOCK connector

HDL SYSTEM

ACTIVE LINE ARRAY

The HDL System is changing the concept of large format arrays, providing first-class performance to an extended market of professional users.

The HDL System is equipped with modern and innovative technology. Each component has been consistently and specially developed by RCF's experienced engineering teams, carefully matched to each speaker. This complete integration of all elements allows not only superior performance and maximum operational reliability, but also provides users easy installation and plug & play comfort. Having an HDL system gives you the freedom to adapt each system to the location, with powerful software tools for system design and tuning.

NEW PERSPECTIVE ON LINEARITY

RCF speakers are designed using a proprietary and advanced FIR filtering technology, conceived to deliver transparent sound, absolute clarity, and perfect sound image to the listener. The special FIRPHASE filters allow coherent distribution of sound for all listeners without phase distortions, ensuring minimum latencies to the system.



THE TRANSDUCERS INNOVATORS

The RCF loudspeaker line incorporates a vast range of transducers covering the entire audio spectrum. We design our transducers to optimize the relationship between the purity of sound, combining the absence of distortion and the ability to withstand high power levels over a long period of time.

PERFECT ISOPHASIC DESIGN

The specially-designed front baffle provides coplanar woofers and controlled LF dispersion for identical left-right coverage. Optimal components arrangement and special DSP algorithms take care of the constant directivity without spots of break up or attenuation. The HDL 4PATH waveguide allows precise coverage while also delivering a superb, linear high-frequency response. The unique shape of the ducts forming the guide creates an ideal isophasic load from the crossover frequency to the highest audible frequencies.



HDL 30-A

- 137 dB SPL Max
- 2200 W peak 2-ch amplifier
- 50 ÷ 20000 Hz Freq. Range
- 100° x 15° coverage angle
- 4" neo C.Driver
- 2 x 10" neo Woofer
- 680 Hz Crossover
- FIRPHASE on-board
- RDNet



HDL 28-A

- 135 dB SPL Max
- 2200 W peak 2-ch amplifier
- 50 ÷ 20000 Hz Freq. Range
- 100° x 15° coverage angle
- 3" neo C.Driver
- 2 x 8" neo Woofer
- 750 Hz Crossover
- FiRPHASE on-board
- RDNet



HDL 26-A

- 135 dB SPL Max
- 2000 W peak 2-ch amplifier
- 55 ÷ 20000 Hz Freq. Range
- 100° x 15° coverage angle
- 3" neo C.Driver
- 2 x 6" neo Woofer
- 750 Hz Crossover
- FiRPHASE on-board
- RDNet



HDL 20-A

- 135 dB SPL Max
- 1400 W Peak 2-ch amplifier
- 55 ÷ 20000 Hz Freq. Range
- 100° x 15° coverage angle
- 3" C.Driver
- 2 x 10" Woofer
- 800 Hz Crossover



HDL 10-A

- 133 dB SPL Max
- 1400 W 2-ch amplifier
- 65 ÷ 20000 Hz Freq. Range
- 100° x 15° coverage angle
- 2.5" neo C.Driver
- 2 x 8" neo Woofer
- 800 Hz Crossover



HDL 6-A

- 131 dB SPL Max
- 1400 W peak 2-ch amplifier
- 65 ÷ 20000 Hz Freq. Range
- 100° x 10° coverage angle
- 1.7" neo C.Driver
- 2 x 6" neo Woofer
- 900 Hz Crossover
- FiRPHASE on-board



HDL 38-AS

- Flyable Sub for the HDL 30-A array
- 136 dB SPL Max
- 3200 W Class-D Amplifier
- 30 ÷ 140 Hz Freq. Response
- 18" Neo Woofer, 4" v.c.
- RDNet



HDL 36-AS

- Flyable Sub for the HDL 28-A array
- 135 dB SPL Max
- 3200 W Class-D Amplifier
- 40 ÷ 140 Hz Freq. Response
- 15" Neo Woofer, 4" v.c.
- RDNet



HDL 35-AS

- Flyable Sub for the HDL 26-A array
- 134 dB SPL Max
- 2200 W Class-D Amplifier
- 40 ÷ 140 Hz Freq. Response
- 15" Neo Woofer, 4" v.c.
- RDNet



HDL 12-AS

- Flyable Sub for the HDL 6-A array
- 131 dB SPL Max
- 1400 W Peak power
- 40 ÷ 140 Hz Freq. Response
- 12" Neo Woofer, 3" v.c.

COMPACT C SERIES

TWO-WAY PROFESSIONAL SPEAKERS

Compact C Series is composed of two-way point source speakers for near and mid-distance applications, combining a compact size with very high output for accurate speech and music reproduction.

Compact C Series is composed of two-way point source speakers for near and mid-distance applications, combining a compact size with very high output for accurate speech and music reproduction. Combining high-quality birch plywood cabinets with neodymium transducers and a 100° x 50° rotatable constant directivity horn.



COMPACT C 45

- 700 W power handling (RMS)
- 138 dB max SPL
- 48 ÷ 20000 Hz frequency range
- 100° x 50° constant directivity coverage angle
- 1 x 15" high power neodymium woofer
- 1 x 4.0" v.c. neodymium compression driver
- Steel front grille with protective foam
- Installation points available on top, bottom, rear, and side panels
- 2 x SPEAKON in/out connectors

COMPACT C 45 WP

- 700 W power handling (RMS)
- 138 dB max SPL
- 48 ÷ 20000 Hz frequency range
- 100° x 50° constant directivity coverage angle
- 1 x 15" high power neodymium woofer
- 1 x 4.0" v.c. neodymium compression driver
- Steel front grille with protective foam
- Installation points available on top, bottom, rear, and side panels
- 2 x SPEAKON in/out connectors
- Steel front grille with protective foam and waterproof protection

MULTIPURPOSE SOUND

Elegant design aesthetics and RCF signature sound quality that delivers a supreme audio experience in any application, from sports halls to clubs, corporate spaces, and live venues. Available in three sizes - starting from 12-inch to 15-inch woofers with excellent acoustic performance for both background and foreground music.

CONSTANT DIRECTIVITY WAVEGUIDE

The special waveguide design allows the deployment of COMPACT C speakers with accurate control of the directional characteristics. In difficult acoustic environments, intelligibility is significantly increased. Using the optional HN-KIT COMPACT C 32 C 45 accessory, it is possible to replace the speaker horn with two different horns and change directivity to 100° x 25° or 60° x 25°.



COMPACT C 32

- 600 W power handling (RMS)
- 137 dB max SPL
- 54 ÷ 20000 Hz frequency range
- 100° x 50° constant directivity coverage angle
- 1 x 12" high power neodymium woofer
- 1 x 3.0" v.c. neodymium compression driver
- Steel front grille with protective foam
- Installation points available on top, bottom, rear, and side panels
- 2 x SPEAKON in/out connectors



The C3110 is a full range extremely versatile wide-dispersion, low profile, two-way loudspeaker system for near field applications. Its compact size makes it ideal for low visibility side wall mounting. The high-frequency section is a constant directivity horn loaded to a 1" compression driver with a 1.5" diaphragm assembly for smooth, wide dispersion. The low-frequency transducer is a 10" woofer with a 2" voice coil.



C 3110-126

- 128 dB SPL Max
- 2000 W Peak Power
- 67 ÷ 20000 Hz Frequency Range
- 120° x 60° CMD constant directivity horn
- 1.5" C. Driver
- 10" Woofer
- Crossover 2 kHz
- LICC (Low Impedance Compensated Crossover) network
- 10 Suspension points
- 1 top pole mount, 1 bottom pole mount

C 3110-96

- 128 dB SPL Max
- 2000 W Peak Power
- 67 ÷ 20000 Hz Frequency Range
- 90° x 60° CMD constant directivity horn
- 1.5" C. Driver
- 10" Woofer
- Crossover 2 kHz
- LICC (Low Impedance Compensated Crossover) network
- 10 Suspension points
- 1 top pole mount, 1 bottom pole mount

The C3108-126 is a full range extremely versatile wide-dispersion, low profile, two-way loudspeaker system for near field applications. Its compact size makes it ideal for low visibility side wall mounting. The high-frequency section is a constant directivity horn loaded to a 1" compression driver with a 1.5" diaphragm assembly for smooth, wide dispersion. The low-frequency transducer is an 8" woofer with a 2" voice coil.



C 3108-126

- 128 dB SPL Max
- 2000 W Peak Power
- 70 ÷ 20000 Hz Frequency Range
- 120° x 60° CMD constant directivity horn
- 1.5" C. Driver
- 8" Woofer
- Crossover 2 kHz
- LICC (Low Impedance Compensated Crossover) network
- 10 Suspension points
- 1 top pole mount, 1 bottom pole mount

C 3108-96

- 128 dB SPL Max
- 2000 W Peak Power
- 70 ÷ 20000 Hz Frequency Range
- 90° x 60° CMD constant directivity horn
- 1.5" C. Driver
- 8" Woofer
- Crossover 2 kHz
- LICC (Low Impedance Compensated Crossover) network
- 10 Suspension points
- 1 top pole mount, 1 bottom pole mount

COMPACT M SERIES

MULTIPURPOSE TWO-WAY FULL-RANGE SPEAKER SYSTEM

Suitable for a wide range of applications. Its sound quality and compactness combine with an elegant design and accurate finishing to make the COMPACT M series the perfect choice for any environment.

Engage your audience with this multipurpose two-way passive speaker series, ideal for a wide range of installed applications. The sound quality and the neutral design make COMPACT M series suited to every environment, providing excellent acoustic performance for both background and foreground music. With a complete range of solid wood cabinets, multiple rigging points and accessories, installation time is minimal.

IMPROVE THE AUDIO ATMOSPHERE

Music supports engagement and improves the feeling of hospitality in the environment, especially if the perceived sound quality is higher. RCF's Compact M Series is designed specifically for optimal performance in both background music and high-powered foreground audio.

ENGAGE YOUR CUSTOMERS

Compact dimensions and an impressive ratio of size/weight to SPL output: Let your audience enjoy an immersive musical experience.

WIDE COVERAGE, ELEGANT DESIGN

Smooth and wide frequency response with constant coverage, thanks to the CMD wave-guided compression driver.

SMOOTH INSTALLATION

COMPACT M speakers embody the functionality and style you expect of Italian design, always in harmony with the installation environment. Available in a wide range of models for all sizes and power levels, the Compact M series gives you the optimal combination to match with any coverage need. Moreover, the rotatable horn and RCF logo allow both vertical and horizontal speaker installation.

All models are built of high-quality wood, with multiple rigging points for a convenient flying/hanging installation. Thanks to the range of accessories, installation time is minimal. If needed, the EUROBLOCK connection panel can be replaced with a female Neutrik SpeakON one.

THE TRANSDUCERS INNOVATORS

High sensitivity and Hi-Fi sound quality with meticulously selected components.

OPTIMAL SOUND PERFORMANCE

The available SPL level and low distortion characteristics go way beyond what is usually expected of a compact solution.



COMPACT M 12

- 129 dB SPL Max
- 300 W RMS Power
- 1200 W Peak Power
- Directivity Index Q: 9
- 55 ÷ 20000 Hz Freq. Range
- 90° x 70° coverage angle
- 1.4" C. Driver
- 12" Woofer
- 1800 Hz Crossover Frequencies
- 4 pole EUROBLOCK connector



COMPACT M 10

- 128 dB SPL Max
- 300 W RMS Power
- 1200 W Peak Power
- Directivity Index Q: 9
- 60 ÷ 20000 Hz Freq. Range
- 90° x 70° coverage angle
- 1.4" C. Driver
- 10" Woofer
- 1800 Hz Crossover Frequencies
- 4 pole EUROBLOCK connector



COMPACT M 08

- 128 dB SPL Max
- 200 W RMS Power
- 800 W Peak Power
- Directivity Index Q: 9
- 60 ÷ 20000 Hz Freq. Range
- 90° x 70° coverage angle
- 1.4" C. Driver
- 8" Woofer
- 1800 Hz Crossover Frequencies
- 4 pole EUROBLOCK connector



COMPACT M 06

- 116 dB SPL Max
- 100 W RMS Power
- 400 W Peak Power
- Directivity Index Q: 7
- 60 ÷ 20000 Hz Freq. Range
- 120° x 80° coverage angle
- 1.3" Neo Dome Tweeter
- 6" Woofer
- 2200 Hz Crossover Frequencies
- 4 pole EUROBLOCK connector



COMPACT M 05

- 115 dB SPL Max
- 80 W RMS Power
- 320 W Peak Power
- Directivity Index Q: 7
- 70 ÷ 20000 Hz Freq. Range
- 120° x 80° coverage angle
- 1.3" Neo Dome Tweeter
- 5" Woofer
- 2200 Hz Crossover Frequencies
- 4 pole EUROBLOCK connector



COMPACT M 04

- 110 dB SPL Max
- 60 W RMS Power
- 240 W Peak Power
- Directivity Index Q: 6
- 90 ÷ 20000 Hz Freq. Range
- 120° x 120° coverage angle
- 1" Neo Dome Tweeter
- 4" Woofer
- 3000 Hz Crossover Frequencies
- 4 pole EUROBLOCK connector

MONITOR SERIES

TWO-WAY PASSIVE SPEAKERS

Bass-reflex two-way speaker designed to deliver uncompromised audio performance and high reliability in fixed installations.

Housed in self-extinguishing plastic, the MR series is designed to deliver uncompromising audio performance and reliability in fixed installations. MR speakers blend in with any environment and deliver deep bass, smooth midrange, and finely-detailed high-frequency response. Quality components and careful acoustic design make the MR series a perfect choice for applications such as speech and music reproduction

VERSATILE SOUND

Elegant and discreet design, combined with an excellent audio performance, represent the RCF sound. MR speakers are ideal both for speech and music reproduction in any business and A/V application and deliver deep bass, smooth midrange, and finely-detailed high-frequency response.

CONSTANT VOLTAGE SPEAKERS (T VERSION)

Constant-voltage speaker systems, also called high impedance or 70V/100V audio distribution systems, refer to networks of loudspeakers equipped with line transformers connected to an audio amplifier with high impedance output. This approach offers several advantages such as:

- High voltage (70V or 100V) enables long cable runs between amp and speakers with reduced power loss: low level current allows smaller cable diameters
- Speakers can be wired in parallel in large number, limited only by available amplifier power
- Different speaker types with different power requirements can share the same speaker line simultaneously making the system-wiring easier
- Adding or removing a speaker is very quick and simple, it does not require to re-wire the overall circuit

UNCOMPROMISED PERFORMANCE

Quality components and careful acoustic design make the MR series a perfect choice for applications such as speech and music reproduction in all A/V applications. Designed for easy installation into bars and restaurants, leisure hospitality, recreational facilities, theme parks, shopping malls or audio monitoring facilities.

All models use purpose-designed 1" voice coil woofers and 0.8" voice coil dome tweeters, combined with RCF Low Inductance Compensated Crossover (LICC) to assure exceptional audio performance and long-term reliability.

SMOOTH INSTALLATION

Housed in self-extinguishing plastic, the MR series delivers uncompromising audio performance and reliability in fixed installations where the speakers would blend into any environment. MR speakers are easy to install, with included and optional accessories to increase installation flexibility for wall mounting.

**MR 50**

- 110 dB SPL Max
- 60 W RMS Power
- 240 W Peak S Power
- 60 ÷ 20000 Hz Freq. Range
- 3000 Crossover Freq.
- 110° x 100° coverage angle
- 1" Neo Dome Tweeter
- 5" Woofer

**MR 40**

- 108 dB SPL Max
- 40 W RMS Power
- 160 W Peak S Power
- 70 ÷ 20000 Hz Freq. Range
- 3000 Crossover Freq.
- 110° x 100° coverage angle
- 1" Neo Dome Tweeter
- 4" Woofer

**MR 50T**

- 110 dB SPL Max
- 60 W RMS Power
- 240 W Peak S Power
- 60 ÷ 20000 Hz Freq. Range
- 3000 Crossover Freq.
- 110° x 100° coverage angle
- 1" Neo Dome Tweeter
- 5" Woofer

**MR 40T**

- 108 dB SPL Max
- 40 W RMS Power
- 160 W Peak S Power
- 70 ÷ 20000 Hz Freq. Range
- 3000 Crossover Freq.
- 110° x 100° coverage angle
- 1" Neo Dome Tweeter
- 4" Woofer

ACTIVE SUBWOOFERS

The low-frequency matching complement for RCF professional speakers feature strong baltic birch construction, high-quality mechanics, superior acoustic design, and premium RCF Precision Transducers. The SUB Series brings the legendary RCF low-frequency efficiency and power to your sound system.

TOP END ELECTRONICS

Amplifiers integrate low-noise DSP circuits, controlled through the RCF proprietary RDNet network to easily handle the soft clipping limiters, RMS limits, polarity, amplitude, timing, and equalization. All settings, monitoring, and advanced features are available inside the RDNet Networked Management software. The control panel on the back allows multiple operations such as input sensitivity, Low Cut, Xover, volume, bypass, delay, and presets selection. The amplifier houses on a unique Vibrostop floating aluminum panel for extra protection.

HIGH PERFORMANCE HYPERVENTED WOOFERS

RCF manufactures these components to deliver the cleanest, punchiest, and undistorted low-frequency reproduction. RCF engineers have developed a unique internal ventilation system with very low power compression to dissipate the powerful voice coil's heat. The Hyper Vented System results from a complex combination of ventilation ducts in the voice coil former, in the magnetic structure, and in the woofer's basket. Also, the demodulation rings reduce the harmonic and intermodulation distortion associated with the voice coil displacement and, as input current varies, the system inductance is more linear. RCF Precision cones are water-resistant.

STURDY CABINETS

All cabinets are made of high-quality birch plywood with weatherproof treatment. The subs are stackable and lightweight for an easy set-up and tear down. The heavy-duty coating and the cabinet's rugged structure withstand long-term use—separate housing for the amplifier guarantees component efficiency and reliability.



SUB 9006-AS

- 142 dB max SPL
- 7200 W Peak power
- 2 x 18" Woofer
- 30 ÷ 400 Hz Freq. Response
- RDNet



SUB 9004-AS

- 136 dB max SPL
- 2800 W Peak power
- 18" Neo Woofer
- 30 ÷ 400 Hz Freq. Response
- RDNet



SUB 8006-AS

- 137 dB max SPL
- 5000 W Peak power
- 2 x 18" Woofer
- 30 ÷ 120 Hz Freq. Response
- Compatible with HD 20-A



SUB 8004-AS

- 136 dB max SPL
- 2500 W Peak power
- 18" Woofer, 4" v.c.
- 30 ÷ 120 Hz Freq. Response
- Compatible with NXL 24-A



SUB 8003-AS MK3

- 2200 W
- 135 dB max SPL
- 35 Hz - 120 Hz frequency response
- 18" Woofer, 4.0" v.c.

PASSIVE SUBWOOFERS

Highly efficient design, various configurations, particularly well-suited matching subwoofer in high-quality sound systems for clubs, bars and cafes, theatres, multimedia, and corporate A/V applications.

POWERFUL LOWS

RCF subwoofers are the first choice of many sound engineers, due to their very high SPL levels at very low frequencies, smaller dimensions compared to the competitors, and impressive size/weight to SPL output ratio. Your audience will enjoy an engaging immersive musical experience.

MULTIPURPOSE SOUND

Elegant design aesthetic, multiple formats and RCF signature sound quality that allows to deliver a supreme audio experience in any application, from restaurant and retail shops to clubs, corporate spaces and venues.



S 8028 II

- 141 dB SPL Max
- 3000 W RMS Power
- 12000 W Peak Power
- 30 ÷ 200 Hz Freq. Range
- 2 x 18" Woofer



S 8018 II

- 137 dB SPL Max
- 1500 W RMS Power
- 6000 W Peak Power
- 30 ÷ 200 Hz Freq. Range
- 18" Neo Woofer



S 8015 II

- 133 dB SPL Max
- 1500 W RMS Power
- 6000 W Peak Power
- 35 ÷ 200 Hz Freq. Range
- 15" Neo Woofer



S 29

- Up to 3000 W power handling
- 143 dB max SPL
- 25 ÷ 200 Hz frequency range
- 2x19" HyperVented Neodymium Woofer with 4" v.c.



S 19

- Up to 1500 W power handling
- 139 dB max SPL
- 30 ÷ 200 Hz frequency range
- 19" HyperVented Neodymium Woofer with 4" v.c.



S 15

- 500W AES power handling
- 126 dB max SPL
- 35 ÷ 200 Hz frequency range
- 1 x 15" high-power woofer
- High-quality plywood cabinet



S 12

- 125 dB SPL Max
- 400 W RMS Power
- 1600 W Peak Power
- 40 ÷ 200 Hz Freq. Range
- 12" Woofer



S 10

- 124 dB SPL Max
- 400 W RMS Power
- 1600 W Peak Power
- 45 ÷ 200 Hz Freq. Range
- 10" Woofer



S 8015LP

- 135 dB SPL Max
- 800 W RMS Power
- 3200 W Peak Power
- 43 ÷ 250 Hz Freq. Range
- 15" Woofer

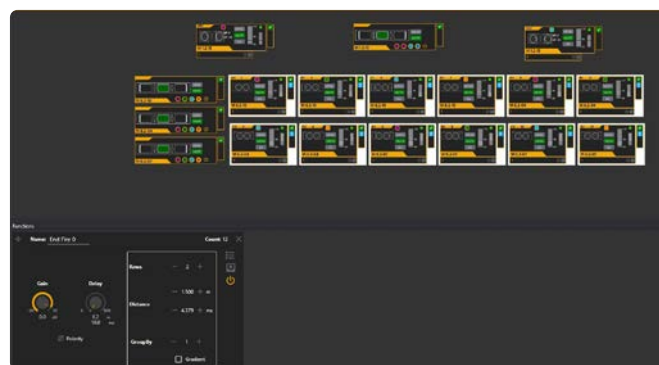
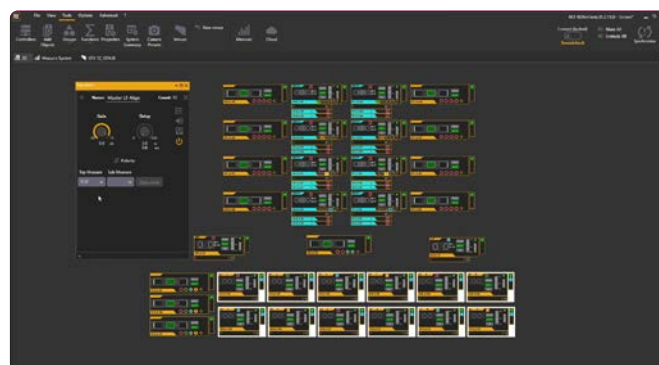
RDNet 5

SOUND SYSTEM MANAGEMENT and CONTROL SOFTWARE

RDNet is a powerful management network and control platform for small to arena-sized sound systems and large-scale installations.



RDNet is an advanced platform for integrated monitoring and control of sound systems - from small live and installed setups to massive arena systems. Based on a robust networked architecture, RDNet combines system control, line array design, and comprehensive audio measurements into a single powerful software package. Engineers and technicians can intuitively manage every device on the network, from individual components to multiple groups. The platform provides full DSP control of compatible devices, with flexible configuration tools for perfectly tuning the system response at maximum speed. Users have real-time access and oversight of all key settings from a centralized interface.



THE TOOLBOX FOR SYSTEM DESIGN AND OPTIMIZATION

RDNet displays all audio devices connected to the network as objects on the main window. The real-time monitoring features a multitude of parameters such as fan speed, temperature, the inclination of a single speaker, VU Meters, peak levels, and more. The operator has complete control of time delay and equalization of every speaker, individually or grouped. With its built-in DSP, each device is an active part of the system, able to store presets, receive commands, and continuously send status information. Comprehensive monitoring is standard in RDNet: VU metering, clip indicator, limiter intervention, device inclination, communication issues—down to the status of a single component or a transducer—and much more.

FEATURES

- Array and Zones Grouping for self- and externally-powered systems
- Real-time Discovery and Complete Monitoring
- Complete Real-Time FFT Analyzer with EQ integration and Auto-Alignment
- Adjust Hi-Pass, EQ, Gain, and Delay on individual components
- New IP-based RDNet-OE architecture
- Cloud Storage and Import full
- Shape Designer Array Calculator

RDNET MEASURES

RDNet Measure is a powerful 4-input Dual-Channel FFT Audio Analyzer able to measure Magnitude, Phase, RTA, Coherence, and Impulse response. Functions included spans from a delay finder, a multiple signal generator, and an integrated SPL meter/logger with calibration tools. There's no need for external software to get the job done.



WHAT'S NEW IN VERSION 5

The latest release features a streamlined workflow for seamlessly grouping self- and externally-powered systems. Device discovery is optimized with quicker drag-and-drop functionality, making it easy to manage hybrid systems. For example, a configuration using both TT+ Audio and RCF HDL loudspeakers. The improved user interface includes an advanced EQ visualization with amplitude/phase response plot and real-time FFT analysis. The redesigned cloud infrastructure allows projects and measurements to be saved remotely and recalled from any location.

NEW: AUTOMATIC ALIGNMENT

The time-saving [Automatic LF Alignment] and [Fill/Delay Align] functions integrated with RDNet Measure allow for quickly aligning big systems directly from measurements. The process is simple: after saving RDNet Impulse Response Measurements by group of speakers (Line Array, Subwoofer group, Cluster or Fill Speakers), the [Automatic LF Alignment] function automatically calculates and applies the best phase alignment of the sound system with the subwoofer group, while the [Fill/Delay Align] provides the best temporal alignment between two groups of speakers.

GET THE MOST OUT OF YOUR SYSTEM

RDNet gives the ability to control devices in Groups for easy supervision. Arrays customizable Group properties are Zones, Air Compensation, Cluster Size, FIRPHASE Gain. When assigning Group Array objects in Zones: every Zone has its color for quick reference of set parameters. An incremental control shapes the Air Absorption Compensation, which can be very useful with changes in humidity or temperature (e.g., soundcheck on a sunny day, concert on a humid night). The line array's low-mid shaping is automatically calculated on the Cluster size to obtain the perfect linear frequency response from the entire system.

LIVE SOUND AND INSTALL AUDIO APPLICATIONS

RDNet provides a comprehensive management system for both live and installed environments. This networked platform facilitates control and allows for the efficient monitoring, routing, and tuning of all RDNet-compatible devices



INDEX AND PART NUMBERS

COLUMN SPEAKERS

PRODUCT	Colour	220-240V	115V	-	Page
VSA 2050 II	White	13100022	13100023	-	22
VSA 2050 II B	Black	13100053	13100054	-	22
VSA 2050 II	Custom	13100024	13100031	-	22
VSA 1250 II	White	13100025	13100026	-	22
VSA 1250 II B	Black	13100055	13100056	-	22
VSA 1250 II	Custom	13100027	13100032	-	22
VSA 850 II	White	13100028	13100029	-	22
VSA 850 II B	Black	13100057	13100058	-	22
VSA 850 II	Custom	13100030	13100033	-	22
CS 6940EN	White	-	-	13100005	23
CS 6520EN	White	-	-	13133079	23
MQ 100L W	White	-	-	13000187	23
MQ 100L B	Black	-	-	13000186	23
L 2406T W	White	-	-	13000177	23
L 2406T	Black	-	-	13000169	23

HDL SYSTEMS

PRODUCT	Colour	90-240V	220-240V	115V	Page
HDL 30-A	Black	13000511	-	-	24
HDL 28-A	Black	13000579	-	-	25
HDL 28-A W	White	13000605	-	-	25
HDL 26-A	Black	13000588	-	-	25
HDL 26-A W	White	13000606	-	-	25
HDL 20-A	Black	-	13040007	13040008	25
HDL 10-A	Black	-	13040016	13040017	25
HDL 10-A W	White	-	13040022	13040023	25
HDL 6-A	Black	-	13000496	13000509	25
HDL 6-A W	White	-	13000514	13000515	25
HDL 38-AS	Black	13000580	-	-	25
HDL 36-AS	Black	13000583	-	-	25
HDL 35-AS	Black	13000575	-	-	25
HDL 35-AS W	White	13000664	-	-	25
HDL 12-AS	Black	-	13000505	13000510	25
HDL 12-AS	White	-	13000532	13000533	25

COMPACT C SERIES

PRODUCT	Colour	8 OHM	16 OHM	100V	Page
COMPACT C 45	Black	13000312	-	-	26
COMPACT C 45 WP	Black	13000281	-	-	26
COMPACT C 32	Black	13000803	-	-	26
C 3110-126	Black	13000284	-	-	27
C 3110-96	Black	13000283	-	-	27
C 3108-126	Black	13000282	-	-	27
C 3108-96	Black	13000281	-	-	27

COMPACT M SERIES

PRODUCT	Colour	8 OHM	-	-	Page
COMPACT M 12	Black	13000596	-	-	29
COMPACT M 12 W	White	13000724	-	-	29
COMPACT M 10	Black	13000595	-	-	29
COMPACT M 10 W	White	13000723	-	-	29
COMPACT M 08	Black	13000594	-	-	29
COMPACT M 08 W	White	13000722	-	-	29
COMPACT M 06	Black	13000582	-	-	29
COMPACT M 06 W	White	13000721	-	-	29
COMPACT M 05	Black	13000581	-	-	29
COMPACT M 05 W	White	13000720	-	-	29
COMPACT M 04	Black	13000623	-	-	29
COMPACT M 04 W	White	13000725	-	-	29

MONITOR SERIES

PRODUCT	Colour	8 OHM	16 OHM	100V	Page
MR 50	Black	13100038	-	-	31
MR 50 W	White	13100040	-	-	31
MR 40T	Black			13100035	31
MR 40T W	White			13100037	31
MR 50T	Black		-	13100039	31
MR 50T W	White		-	13100041	31
MR 40	Black	13100034	-	-	31
MR 40 W	White	13100036	-	-	31

ACTIVE SUBWOOFERS

PRODUCT	Colour	90-240V	100-240V	220-240V	115V	Page
SUB 9006-AS	Black	13000494	-	-	-	32
SUB 9004-AS	Black	13000546	-	-	-	32
SUB 8006-AS	Black	-	-	13000372	13000373	32
SUB 8004-AS	Black	-	-	13000392	13000393	32
SUB 8003-AS MK3	Black	-	13000844	-	-	32

PASSIVE SUBWOOFERS

PRODUCT	Colour	-	-	-	-	Page
S 8028 II	Black	13000391	-	-	-	33
S 8018 II	Black	13000390	-	-	-	33
S 8015 II	Black	13000398	-	-	-	33
S 29	Black	13100097	-	-	-	33
S 19	Black	13100096	-	-	-	33
S 15	Black	13000667	-	-	-	33
S 12	Black	13000618	-	-	-	33
S 10	Black	13000617	-	-	-	33
S 8015LP	Black	13000168	-	-	-	33



www.rcf.it

HEADQUARTERS:

RCF S.p.A. Italy
tel. +39 0522 274 411
e-mail: info@rcf.it

RCF UK
Int. +44 (0) 1702 800846
e-mail: info@rcfaudio.co.uk

RCF France
tel. +33 6 24 15 81 76
e-mail: france@rcf.it

RCF Germany
tel. +49 2203 925370
e-mail: germany@rcf.it

RCF Spain
tel. +34 91 817 42 66
e-mail: info@rcfaudio.es

RCF Benelux
tel. +49 (0) 2203 9253724
e-mail: benelux@rcf.it

RCF USA Inc.
tel. +1 732-9026100
e-mail: info@rcf-usa.com

Note to specifications: audio power data refers to peak power

The data and designs are not binding; RCF reserves the right to modify the data and designs at any time and without previous notice.