

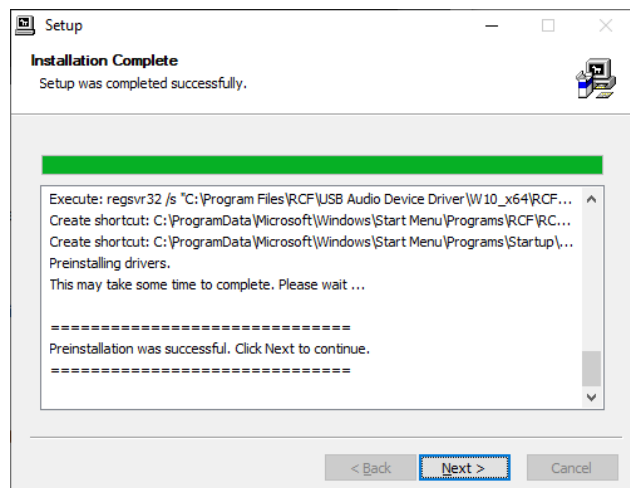
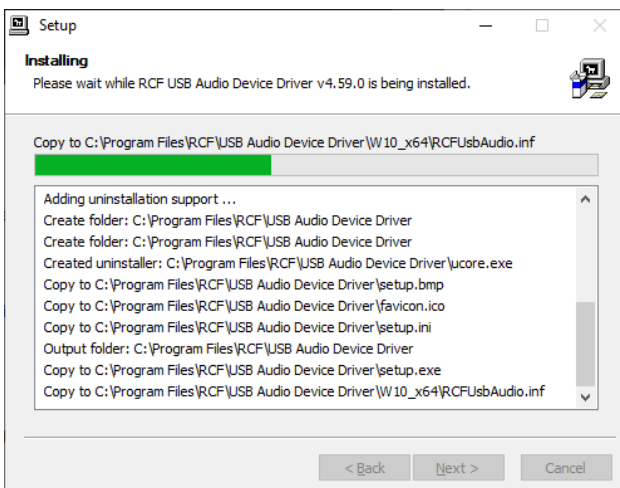
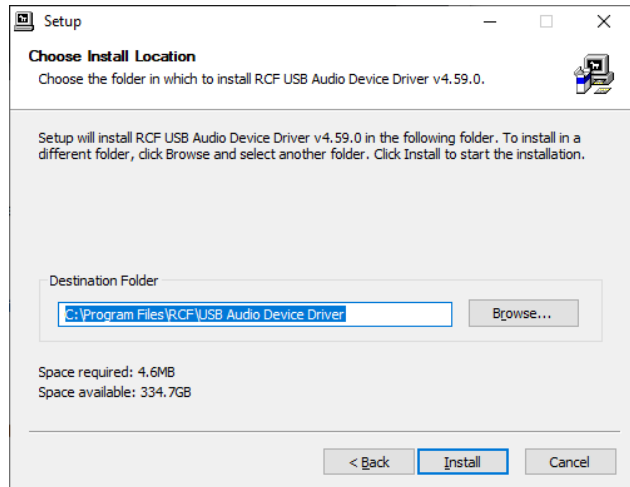
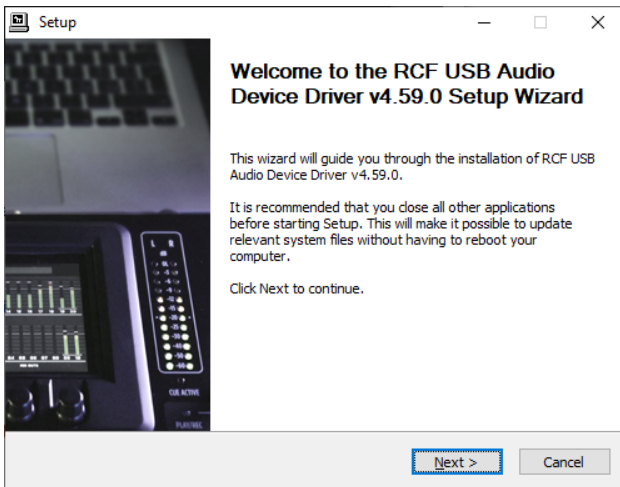
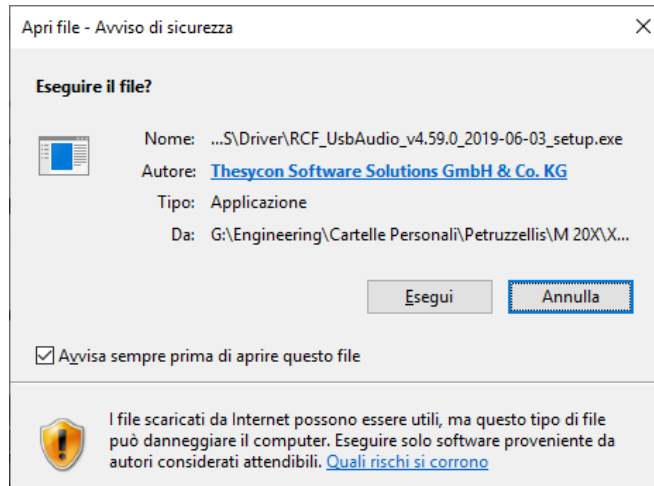


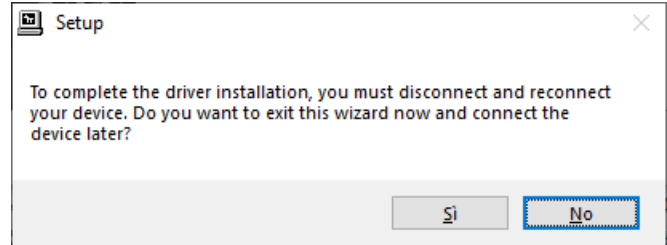
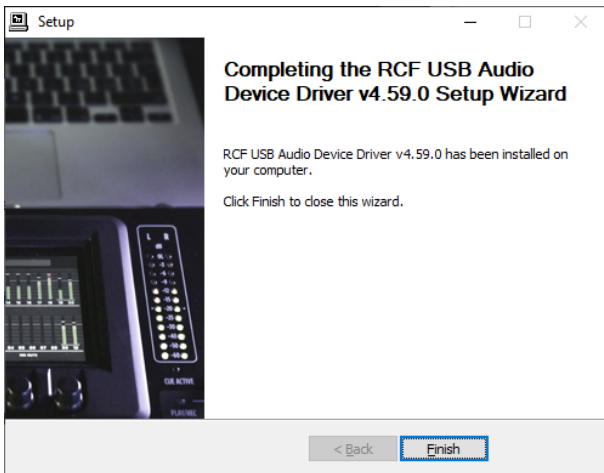
M 20 SERIES

USB Audio Driver Installation Guide

USB AUDIO DRIVER INSTALLATION

1. Download the latest usb driver available on the web page
<https://www.rcf.it/products/mixing-consoles/m-series/m-20-firmware-update>
2. Unzip the .zip file to a temporary folder
3. From the temporary folder click on **RCF_UsbAudio_vx.xx.x_yyyy-mm-dd_setup.exe** to launch the installation and follow the instructions until the installation is completed.

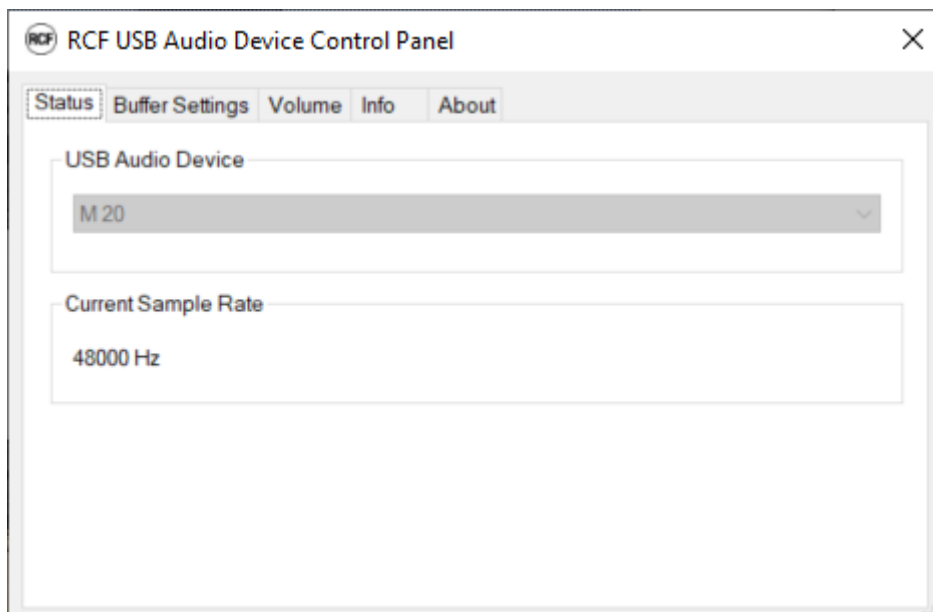




4. When the installation is completed, plug an USB 2.0 A-male to B-male High Speed cable to the M 20 digital mixer. "RCF USB Audio Device Control Panel" icon will appear on the Windows taskbar.



5. Click on the RCF icon to open the "RCF USB Audio Device Control Panel".



6. Choose "RCF USB Audio Device" in the ASIO devices listed in the Audio Preferences of your favorite DAW to use the 24-in/24-out audio interface of the M 20 digital mixer.