



HD 10-A MK5

ENCEINTE DEUX VOIES ACTIVE



Description

The HD10-A MK5 two way active speaker is the perfect companion for rentals, productions, music performance and speech reinforcement. RCF cares about your sound. The vocals are natural, the sound is clear at long distances, the SPL power is stable at very high levels. The concept of the HD-Line derives from the touring industry, bringing in a elegant and compact cabinet all the experience of RCF professional sound with the maximum reliability and strength for the intensive use on the road. Perfect as a main front of house in small PA systems, high powered monitoring and unobtrusive fixed installation.

Caractéristiques

- › 800 watt 2-way peak power
- › 128 dB max SPL
- › Digital bi-amplification, SMPS
- › DSP sound processing
- › 90° x 60°, wide dispersion constant directivity horn
- › 10" woofer, high power, 2.0" voice coil
- › 1.0" HF driver, titanium dome, 1.0" voice coil
- › FiRPHASE processing and Bass Motion Control

Numéro De Pièce

13000659 HD 10-A MK5
13000676 HD 10-A MK5

220-240 V
115 V

Black
Black

EAN 8024530019310
EAN 8024530019518

Spécifications

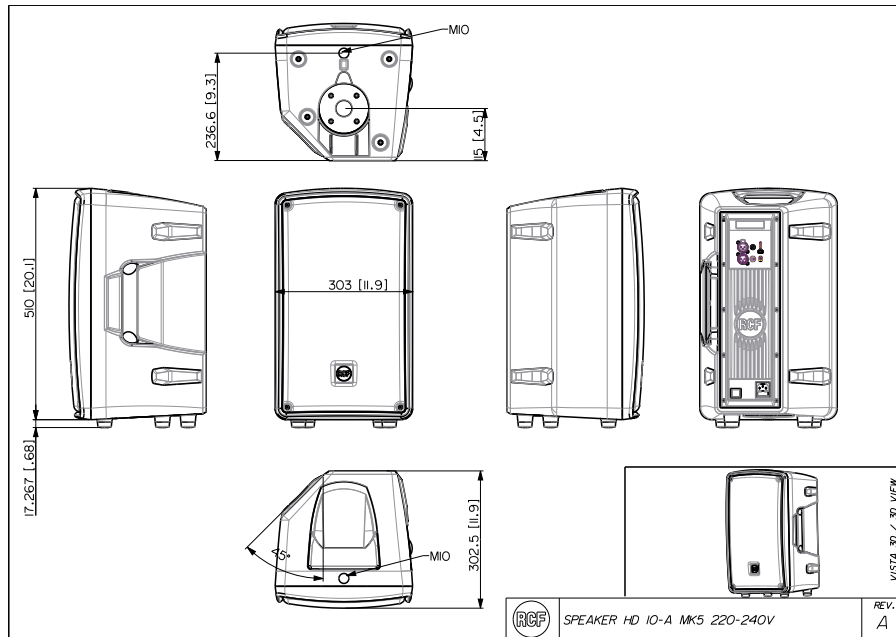
Products are continually improved. All specifications are therefore subject to change without notice.



HD 10-A MK5

ENCEINTE DEUX VOIES ACTIVE

Line Art 2D



SPÉCIFICATIONS

Spécifications acoustiques	Réponse en fréquence	50 Hz ÷ 20000 Hz
	SPL max. @ 1m	128 dB
	Angle de couverture horizontale	90°
	Angle de détection vertical	60°
Hauts-parleurs	Pilote de compression	1 x 1.0", 1.0" v.c
	Woofer	1 x 10", 2.0" v.c
Sections entrées/sorties	Signal d'entrée	bal/unbal
	Connecteurs d'entrée	XLR, Jack
	Connecteurs de sortie	XLR
	Sensibilité d'entrée	-2 dBu/+4 dBu
	Micro : Sensibilité d'entrée	-32 dBu
Section processeur	Fréquences de recouvrement	2000 Hz
	Protections	Thermal, RMS
	Limiteur	Soft Limiter
	Commandes	Boost, Volume, Mic/Line
Section alimentation	Puissance totale	800 W Peak, 400 W RMS
	Hautes fréquences	200 W Peak, 100 W RMS
	Basses fréquences	600 W Peak, 300 W RMS
	Système de refroidissement	Convection
	Connexions	VDE
Conformité standard	Safety agency	CE compliant
Spécifications physiques	Matériau du cabinet/caisson	PP Composite
	Matériel	1 x M10 top, 1 x M10 bottom
	Poignées	1 Top, 1 Side
	Montage sur pied/embase	35 mm insert
	Grille	Steel
	Couleur	Black



HD 10-A MK5

ENCEINTE DEUX VOIES ACTIVE

Taille	Hauteur	527 mm / 20.75 inches
	Largeur	303 mm / 11.93 inches
	Profondeur	303 mm / 11.93 inches
	Poids	11.8 kg / 26.01 lbs

ACCESSOIRES

Accroche / Montage	13360232 AC PMX		EAN 8024530010058
	13360109 AC PRO-FS	Black	EAN 8024530006471
	13360110 AC PRO-PM	Black	EAN 8024530006488
	13360215 H-BR 2X HD 10	Black	EAN 8024530016548
	13360067 PM-KIT M20	Black	EAN 8024530014599
Protections	13360208 CVR HD 10	Black	EAN 8024530010713
	Câbles		
	13360102 AC XLR 3M3F		EAN 8024530006402