



# TT 20-CXA

ACTIVE TWO-WAY HIGH DEFINITION MONITOR



## Description

This active high output stage monitor is a full range, low-profile enclosure with symmetrical transducers arrangement. The optimized frequency and phase response, consistent coverage of 90° x 70°, and potent acoustic output make the TT20-CXA the professional choice for any stage as a monitor or, thanks to the pole socket, as full range front of house system. With an exceptional transient response and the powerful FIRPHASE processing, the TT CXA series far exceeds the capabilities of conventional stage monitors.

## Features

- › 131 dB SPL Max
- › 1000W RMS, two-way Class-D amplifier
- › 90° x 70° constant directivity coverage
- › Multifunctional cabinet with symmetrical transducers' design
- › FIRPHASE
- › 2 x 8" neodymium Woofers, 2.5" voice coil
- › Horn loaded 1.4" neo comp. driver, 3" voice coil
- › RDNet Networked Management

## Part Number

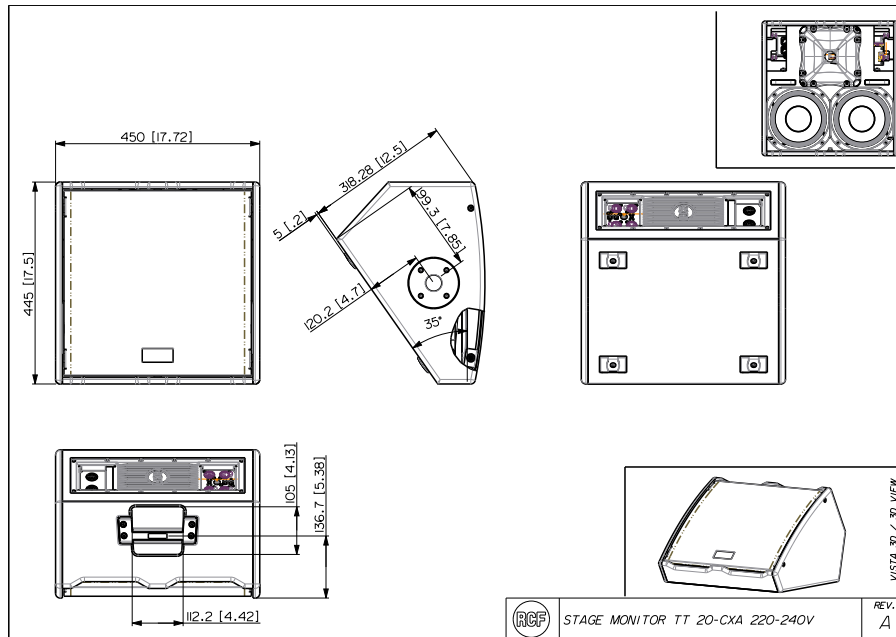
13000544 TT 20-CXA	220-240 V	Black	EAN 8024530016807
13000560 TT 20-CXA	115 V	Black	EAN 8024530017101



# TT 20-CXA

ACTIVE TWO-WAY HIGH DEFINITION MONITOR

Line Art 2D



## TECHNICAL SPECIFICATIONS

<b>Acoustical specifications</b>	Frequency Response	60 Hz - 20000 Hz
	Max SPL @ 1m	131 dB
	Horizontal coverage angle	90°
	Vertical coverage angle	70°
<b>Transducers</b>	Compression Driver	1 x 1.5" neo, 3.0" v.c
	Woofer	2 x 8" neo, 2.5" v.c
<b>Input/Output section</b>	Input signal	bal/unbal
	Input connectors	XLR, RDNet Ethercon
	Output connectors	XLR, RDNet Ethercon
	Input sensitivity	-2 dBu/+4 dBu
<b>Processor section</b>	Crossover Frequencies	900 Hz
	Protections	Thermal, HF
	Limiter	Fast Limiter
	Controls	Bypass, Linear/High Pass, Volume, RDnet on board
	RDNet	Onboard
<b>Power section</b>	Total Power	2000 W Peak, 1000 W RMS
	High frequencies	600 W Peak, 300 W RMS
	Low frequencies	1400 W Peak, 700 W RMS
	Cooling	Convection
	Connections	Powercon IN/OUT
<b>Standard compliance</b>	Safety agency	CE compliant



# TT 20-CXA

ACTIVE TWO-WAY HIGH DEFINITION MONITOR

Physical specifications	Cabinet/Case Material	Baltic birch plywood			
	Handles	1 TOP			
	Grille	Steel			
	Color	Black			
Size / Weight	Height	318 mm / 12.52 inches			
	Width	445 mm / 17.52 inches			
	Depth	450 mm / 17.72 inches			
	Weight	14 kg / 30.86 lbs			
Rigging / Mounting	<b>ACCESSORIES</b>				
	<b>FLOOR STANDS</b>				
	13360109	AC PRO-FS	Black	EAN 8024530006471	
	<b>POLE MOUNT KITS</b>				
	13360232	AC PMX		EAN 8024530010058	
	13360110	AC PRO-PM	Black	EAN 8024530006488	
	13360067	PM-KIT M20	Black	EAN 8024530014599	
	Protections	<b>COVERS</b>			
		13360405	CVR TT 20-CXA	Black	EAN 8024530016340
	Cables	<b>RAIN PROTECTIONS</b>			
13360689		RPR60689	Black	EAN 8024530022914	
Cables	<b>CABLES KIT</b>				
	13360102	AC XLR 3M3F		EAN 8024530006402	