

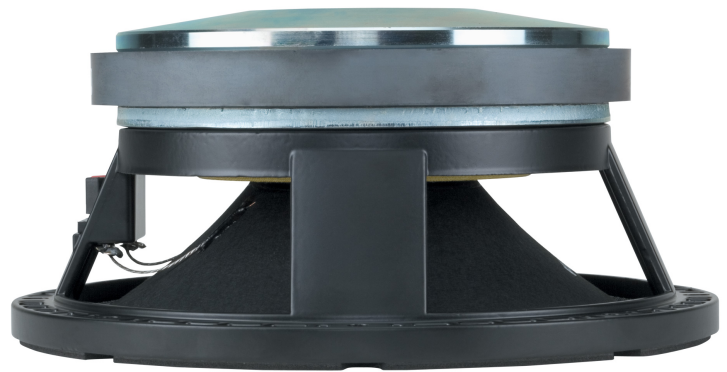
L10-750YK

MID-BASS

DESCRIPTION

The L10-750YK is a professional mid-bass woofer featuring very high output and dynamics.

The mobile equipment, used a 3" coil, fiberglass former and copper wire winding, has enable considerable improvement in transient peak response and has allowed good extension on mid-high frequencies. A specially designed M-roll surround guarantee a very low midrange distortion and perfect damping of the spurious resonances.



FEATURES

- 3-inch, fiberglass inside/outside copper voice coil
- 700W continuous program power handling
- 100 dB Sensitivity
- 70 Hz – 3 kHz Frequency range
- Shaped M-roll damped surround

TECHNICAL SPECIFICATIONS

General specifications	Nominal Diameter:	10 inch / 254 mm
	Rated Impedance:	8 ohm
	Program Power (watt):	700 W
	Power handling capacity:	350 W
	Sensitivity:	100.0 dB
	Frequency range:	70 - 3000 Hz
	Effective piston diameter:	210 mm / 8.27 inch
	Max. Excursion Before Damage:	40 mm / 1.57 inch
	Minimum Impedance (ohm):	7.0 ohm
	Voice Coil Diameter:	3.0 inch / 76 mm
	Voice Coil Winding Material:	Copper
	Voice Coil Length:	9 mm / 0.35 inch
	Number of layers:	2
	Kind of layers:	inside/outside
	Top Plate Thickness:	9 mm / 0.35 inch
	Cone Design:	Curved
	Surround Material:	Polycotton
	Surround Design:	M-roll
	Magnets:	Ceramic
	Spider:	Single
Thiele - small parameters	Resonance frequency (Fs):	68 Hz
	DC resistance (Re) (ohm):	5.10 ohm
	Mechanical factor:	4.20 Qms
	Electrical factor:	0.25 Qes
	Total factor:	0.24 Qts
	BL factor (BL) (T x m):	17.50 T x m
	Effective moving mass (Mms):	36.0 g
	Equivalent Cas air loaded (Vas):	26.0 liters
	Effective piston area (Sd):	0.040 m ²
	Max. linear excursion (Xmax):	3 mm
	Voice coil inductance @ 1kHz (Le1k):	0.50 mH
	Half-space efficiency (Eff):	3.15%
Mounting information	Overall diameter:	260 mm / 10.24 inches
	Bolt circle diameter:	242-247 mm / 9.53-9.72 inch
	Bolt hole diameter:	6 mm / 0.24 inch
	Front mount baffle cut-out:	230 mm / 9.06 inch
	Rear mount baffle cut-out:	229 mm / 9.02 inch
	Volume occupied by the driver:	1.2 liters / 0.05 ft ³
Standard compliance	Safety agency:	CE compliant
Physical specifications	Color:	, Black

Size

Height:	117 mm / 4.61 inches
Diameter:	260 mm / 10.24 inches
Weight:	7 kg / 15.43 lbs

Shipping information

Package Height:	185 mm / 7.28 inches
Package Width:	290 mm / 11.42 inches
Package Depth:	285 mm / 11.22 inches
Package Weight:	7.9 kg / 17.42 lbs

PART NUMBER

- **11130015**

L10-750YK

8ohm

