



TRK PRO1

24-BIT 192kHz USB AUDIO INTERFACE



Description RCF TRK PRO1 hardware interface packs a robust and well-thought USB 2.0 studio-in-a-box with all the connectivity required for microphones, musical instruments, or line-level signals to a computer running macOS or Windows. The internal linear preamp circuit allows the connection of 48V phantom-powered microphones and Hi-Z level instruments. The input signal can be routed to DAW (Digital Audio Workstation) at up to 24-bit, 192 kHz resolution. The interface can be connected to an amplifier and speakers, powered monitors, headphones, an analog mixer, or any other analog audio device.

- Features**
- › 1 In 2 Out USB 2.0 Bus-Powered Audio Interface
 - › Up to 24-Bit/192kHz
 - › 1 Mic and Instrument/line Combo input
 - › High-quality preamp
 - › Balanced Output
 - › Independent headphone volume control
 - › Robust Metal Case
 - › Perfect for RNet Measures
 - › 48V Phantom Power Supply
 - › Independent Gain Control with Signal-Peak LED

Part Number 17100013 TRK PRO1

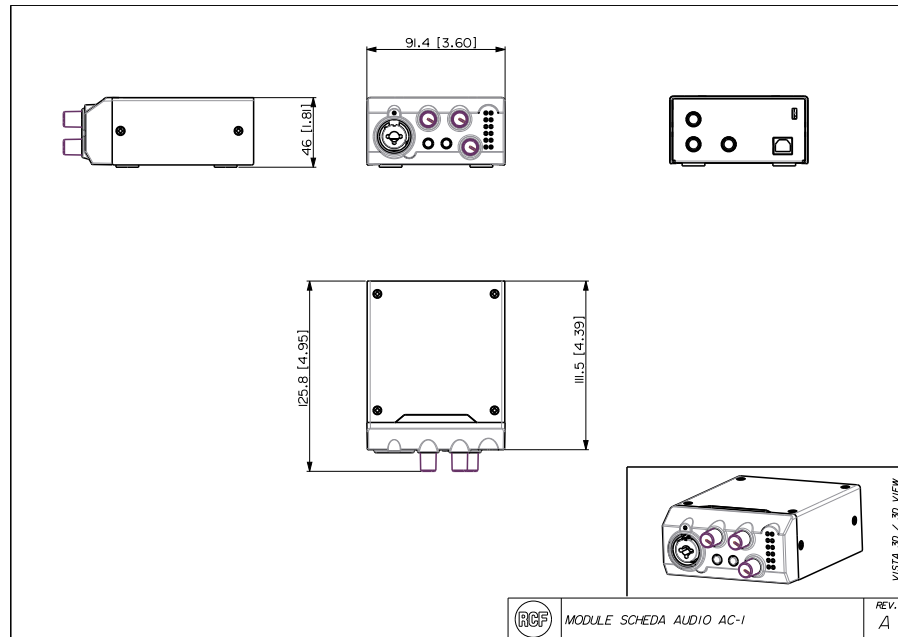
Black - RAL 9005 EAN 8024530019778



TRK PRO1

24-BIT 192kHz USB AUDIO INTERFACE

Line Art 2D



General specifications

TECHNICAL SPECIFICATIONS

MIC INPUT (Balanced)	<p>Freq. Response: 20Hz-20kHz, +/-0.1 dB THD+N: <0.0011%, -1dBFS, 20Hz-20kHz Noise EIN: < -120dB Dynamic Range: 107dB (A-weighted) Input Impedance: 3.5KOhm Gain Range: -9 dB ~ +47 dB Maximum Input Level: +9 dBu</p>
LINE INPUT (Balanced)	<p>Freq. Response: 20Hz-20kHz, +/-0.1dB THD+N <0.0011%, -1dBFS, 20Hz ~ 20kHz Dynamic Range 107 dB (A-weighted) Input Impedance: 15 kOhm Gain Range: -20 dB ~ +36 dB Maximum Input Level +20 dB</p>
INSTRUMENT INPUT (Unbalanced)	<p>Freq. Response: 20Hz-20kHz, +/-0.1dB THD+N: <0.0025%, -1dBFS, 20Hz-20k Input Impedance: 1MOhm Gain Range: -10 dB ~ +46 dB Maximum Input Level: +10 dBu</p>
ANALOG OUTPUT (Balanced)	<p>Dynamic Range: 107 dB (A-weighted) Maximum Output Level 0dBFS=12dBu Freq. Response: 20 Hz-20 kHz, +/-0.2 THD+N <0.0012%, -1dBFS, 20 Hz-20 kHz Dynamic range: 107 dB (A-weighted)</p>
HEADPHONES OUTPUT (Unbalanced)	<p>Output Impedance: <10 Ohm Max Output Level: 500 Ohm - 114 mW</p>
SUPPORTED SAMPLE RATES	<p>44.1 kHz, 48 kHz, 88.2 kHz, 96 kHz, 176.4 kHz, 192 kHz</p>
SUPPORTED BIT DEPTH	<p>16 Bit, 24 Bit</p>
Standard compliance	<p>Safety agency CE compliant</p>
Physical specifications	<p>Cabinet/Case Material Steel Color Black - RAL 9005</p>



TRK PRO1

24-BIT 192kHz USB AUDIO INTERFACE

Size	Height	46 mm / 1.81 inches
	Width	91.4 mm / 3.6 inches
	Depth	125.8 mm / 4.95 inches
	Weight	0.5 kg / 1.1 lbs