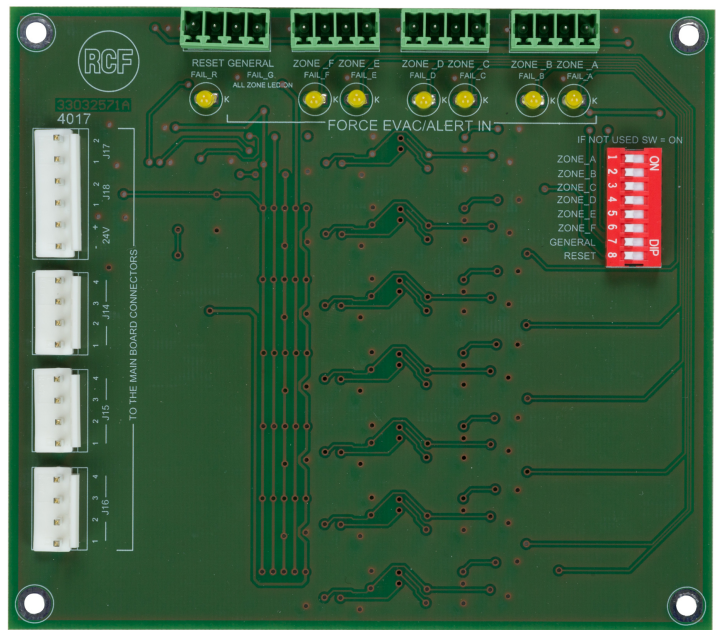


MG 3006

MONITORED GPI BOARD

DESCRIPTION

MG 3006 is an additional board for DXT 3000 master units. It allows monitoring system's General Purpose Inputs (GPI), detecting and reporting open line faults or short circuits along the path between DXT 3000 and other emergency devices, such as alarm buttons. It shall be installed inside the master unit, and powered directly by the system.



FEATURES

- Faults detection and reporting
- General and zone alarm activation
- Reset function
- Powered by master unit

**TECHNICAL SPECIFICATIONS**

General specifications	Reset Function	Yes
	Alarm Activation	Yes
Standard compliance	CE marking:	Yes
Size	Weight:	0.15 kg / 0.33 lbs
Shipping informations	Package Height:	80 mm / 3.15 inches
	Package Width:	210 mm / 8.27 inches
	Package Depth:	150 mm / 5.91 inches
	Package Weight:	0.23 kg / 0.51 lbs

PART NUMBER

- **13360344**

MG 3006

EAN 8024530013356