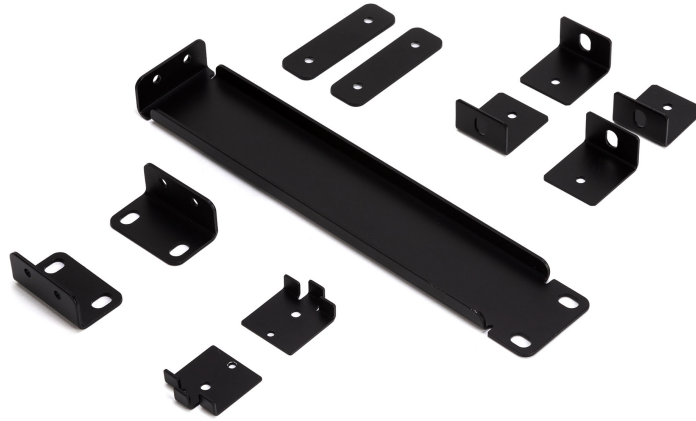




RM-KIT DMA

RACK MOUNT KIT



Description

RM-KIT DMA accessory provides mounting DMA amplifiers individually or two amps side by side in a standard 19" rack cabinets. In case of a single amplifier, the empty half rack unit can be closed with a blind panel (included). It also includes a set of brackets for wall mount installation.

Standard compliance

Safety agency

CE compliant

Size

Weight

1 kg / 2.2 lbs

Physical specifications

Color

Black - RAL 9005

Part Number

13360426 RM-KIT DMA

Black - RAL 9005 EAN 8024530017415

Technical Specifications

RCF products are continually improved. All specifications are therefore subject to change without notice.