



TTP 5-A

POINT SOURCE ARRAY



Description

The TTP5-A is a high power, two way, active array module engineered to deliver high fidelity output for use in indoor and outdoor medium and large spaces. The system is designed to create horizontal or vertical arrays with a constant curvature. The system is designed to be used for medium-small theatres to very large outdoor stadia and public spaces. The RCF Precision newly designed 4" compression driver loaded on a dedicated waveguide guarantees the exceptional sound projection and pattern control. The new woofer design represents the result of many dedicated years in developing new solutions using the best materials available on the market. The integration of two channels 1600 Watt digital amplification and the advanced digital processing set a new standard for distortion, noise and thermal efficiency.

Features

- > 1600 Watt, 2 way amplification
- > 15" neo woofer, 4.0" v.c.
- > 2.0" titanium dome neo c. driver, 4.0" v.c.
- > 22.5° x 60° precision waveguide
- > 96 Khz, 32 bit DSP processing
- > Maximum output, perfect audio fidelity
- > Tour grade cabinet and mechanics
- > RDNet Onboard

Part Number

13000380 TTP 5-A
13000384 TTP 5-A

220-240 V
115 V

Black
Black

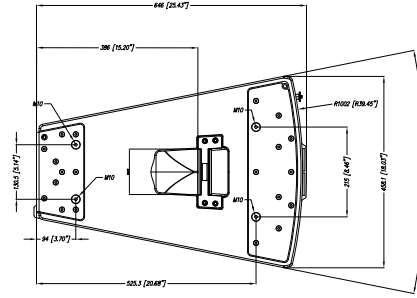
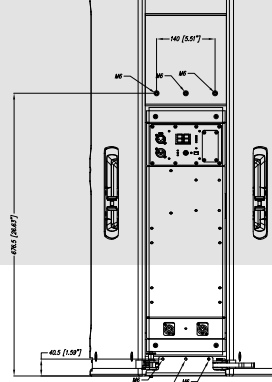
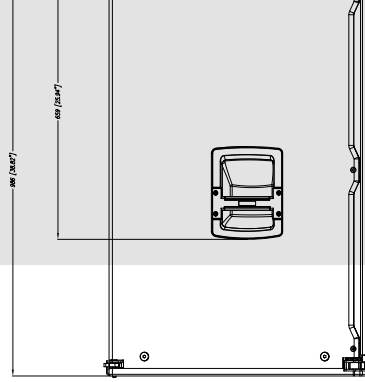
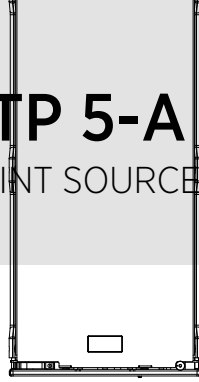
EAN 8024530010522
EAN 8024530010515



TTP 5-A

POINT SOURCE ARRAY

Line Art 2D



TTP5-A

TECHNICAL SPECIFICATIONS

Acoustical specifications	Frequency Response Max SPL @ 1m Horizontal coverage angle Vertical coverage angle	45 Hz ÷ 20000 Hz 138 dB 23° 60°
Transducers	Compression Driver Woofer	1 x 1.4" neo, 4.0" v.c 1 x 15" neo, 4.0" v.c
Input/Output section	Input signal Input connectors Output connectors Input sensitivity	bal/unbal XLR, RDNet Ethercon XLR, RDNet Ethercon +4 dBu
Processor section	Crossover Frequencies Protections Limiter Controls	550 Hz Thermal, RMS Soft Limiter Gain reduction, RDNet local setup/bypass, Time Delay, Presets (Linear, Close, Far)
Power section	RDNet Total Power High frequencies Low frequencies Cooling Connections	Onboard 3200 W Peak, 1600 W RMS 1000 W Peak, 500 W RMS 2200 W Peak, 1100 W RMS Convection Powercon IN/OUT
Standard compliance	Safety agency	CE compliant
Physical specifications	Cabinet/Case Material Hardware Handles Grille Color	Baltic birch plywood Cluster Mechanics 2 side, 1 top , 1 Bottom Steel Black



TTP 5-A

POINT SOURCE ARRAY

Size / Weight	Height	986 mm / 38.82 inches		
	Width	458 mm / 18.03 inches		
	Depth	646 mm / 25.43 inches		
	Weight	66 kg / 145.5 lbs		
Rigging / Mounting	ACCESSORIES			
	FLY BARS			
	13360252	FL-B H 6X TTP 5	Black	EAN 8024530018177
	13360284	FL-B H TTP 5	Black	EAN 8024530018160
	13360249	FL-B V TTP 5	Black	EAN 8024530018191
	LIFTING BRACKETS HORIZONTAL			
	13360251	H-PLATE TTP 5 2X	Black	EAN 8024530018535
	POLE MOUNT KITS			
	13360067	PM-KIT M20	Black	EAN 8024530014599
	SUSPENSION CHAINS			
	13360129	HOIST SPACING CHAIN CH 001	Black	EAN 8024530020774
	Protections	COVERS		
		13360250	CVR TTP 5	Black
	Transportation	RAIN PROTECTIONS		
		13360316	RP 1X TTP 5	Black
	Cables	KART WITH WHEELS		
		13360248	KRT-WH TTP 5	Black
Cables	CABLES			
	12399019	CBL ETHERCON TO XLR F 0.2M	Black	EAN 8024530013882
	12399020	CBL ETHERCON TO XLR M 0.2M	Black	EAN 8024530013899
	CABLES KIT			
	13360102	AC XLR 3M3F		EAN 8024530006402
	12399016	CBL ETHERCON 0.7M	Black	EAN 8024530013844
	12399017	CBL ETHERCON 1.5M	Black	EAN 8024530013851
	12399035	CBL ETHERCON 3M	Black	EAN 8024530013868
	12399018	CBL ETHERCON 5M	Black	EAN 8024530013875
	12399023	CBL LK 25 MULTIPIN 10M	Black	EAN 8024530013837
	12399022	CBL LK 25 MULTIPIN 20M	Black	EAN 8024530013820
	12399024	CBL LKS 19 ARRAY FANOUT	Black	EAN 8024530013905
	12399026	CBL LKS 19 BREAKOUT	Black	EAN 8024530013929
	12399027	CBL LKS 19 POWER 10M	Black	EAN 8024530013936
	13360146	CBL LKS 19 POWER 20M		EAN 8024530013943
	12399025	CBL LKS 19 SUB FANOUT	Black	EAN 8024530013912
	12399021	CBL LKS 25-2 FANOUT	Black	EAN 8024530013813
	13360145	CBL POWER BOX 6X	Black	EAN 8024530015534
	12399031	CBL POWERCON LINK 0.7M	Black	EAN 8024530013738
	12399030	CBL POWERCON LINK 1.5M	Black	EAN 8024530013721
	12399028	CBL POWERCON LINK 10M	Black	EAN 8024530013707
	12399029	CBL POWERCON LINK 5M	Black	EAN 8024530013714
	13360138	POWER CABLE X6 TTL 55-A		